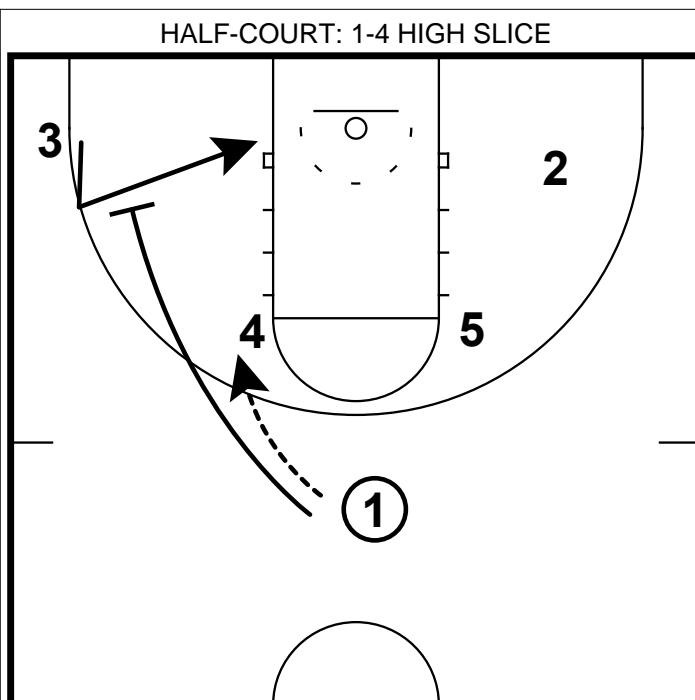
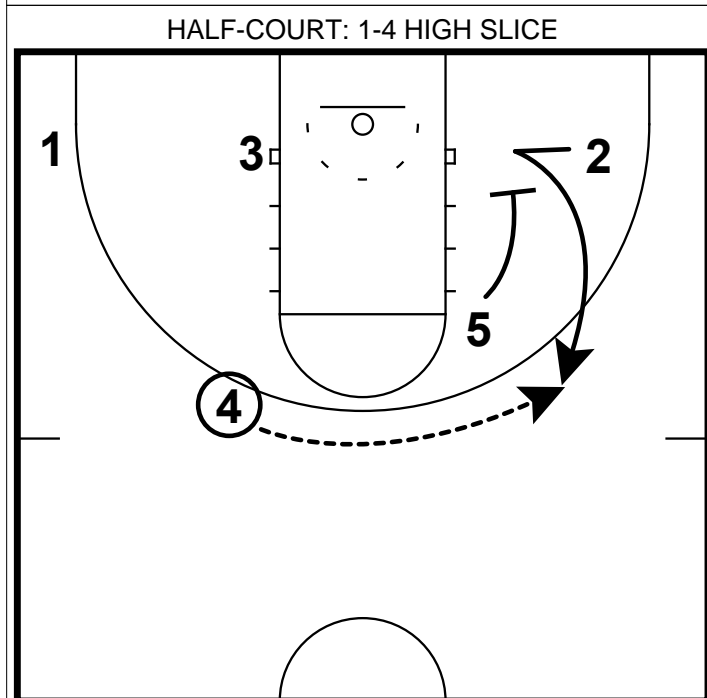


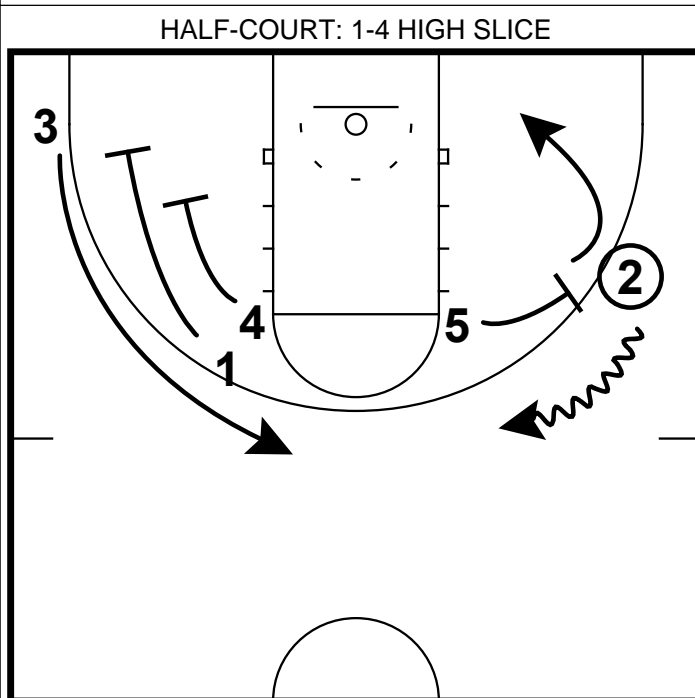
- 1) In this 1-4 high set, start your shooter off on the wing - in the 2 spot.
- 2) Running him/her off of 2 high screens from the posts is hard to guard in the spot. More than likely her defender would chase him/her over the top.



- 1) Once your shooter runs off of 2 screens, the pg will pass to 4 at the elbow.
- 2) As soon as the pg passes, he/she will go to screen for the ball side wing.
- 3) On the other side, the shooter will want to get some depth to prepare for the next screen. On the ball side, 3 needs to hesitate to use the screen or make a back cut to keep the defense honest.



- 1) Now once 4 has the ball, 5 follows two to set a down screen. This is a hard action to guard, even if the defender is chasing - this will be able to get you an open look for a shot.
- 2) On the other side, 1 & 3 need to keep spacing.



- 1) Another option out of this set, is if your shooter catches the ball on the wing off of the double screen. This would set up perfect 2 man game situation.
- 2) Once the pg passes to the wing, setting a double screen away for the opposite wing.