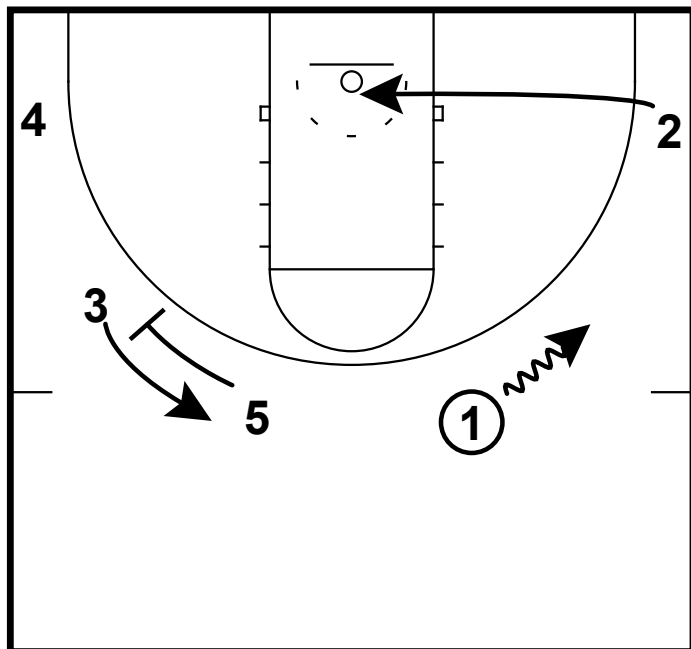
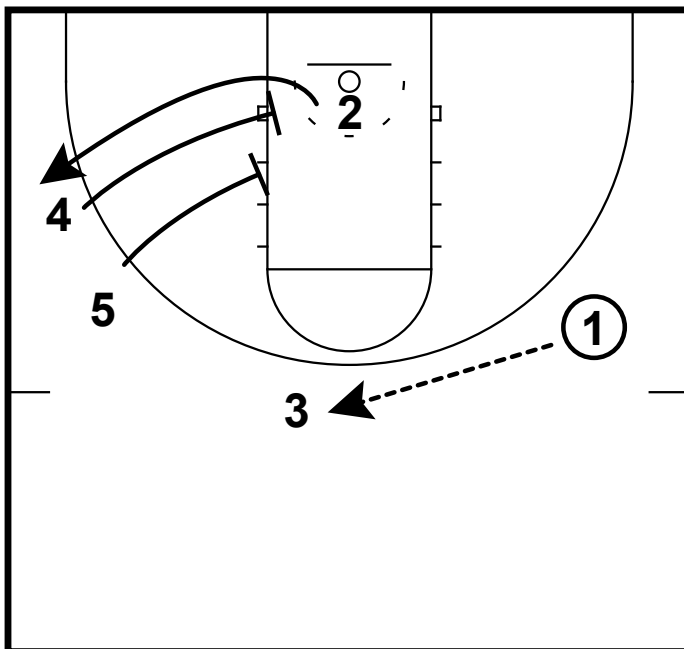


HALF-COURT: VILLANOVA 5 OUT DOUBLE



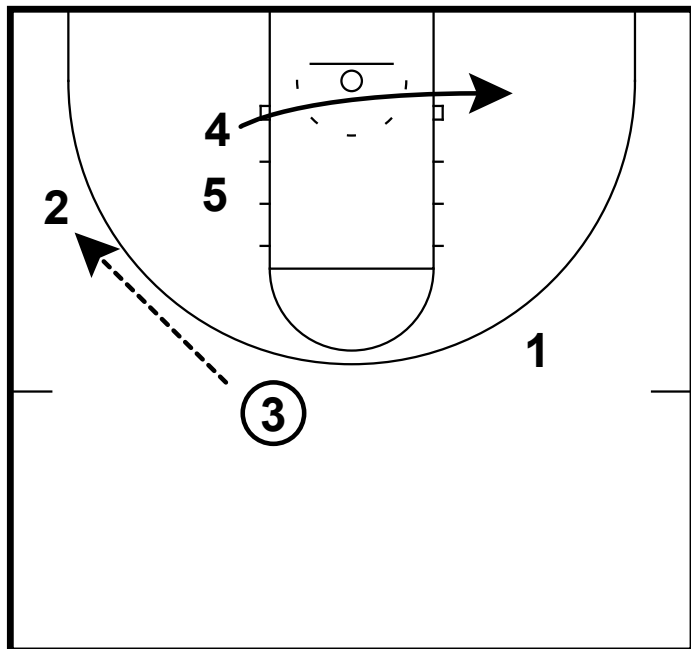
This is a 5 out alignment with a double screen for the shooter. The first action starts when 1 dribbles over to the right wing. 5 will then go screen away for the 3. 2 starts his cut toward the middle.

HALF-COURT: VILLANOVA 5 OUT DOUBLE



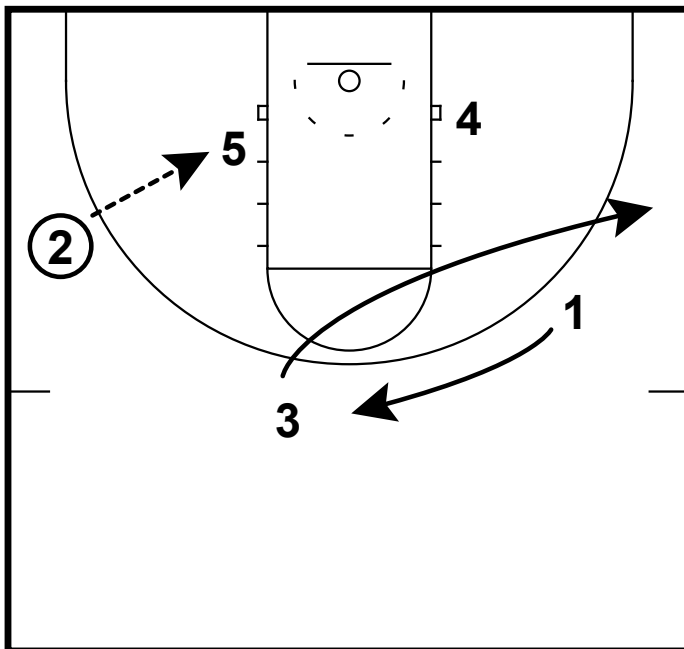
When the ball is being reversed to the 3. The 4 and 5 will go set a double stagger for the 2. 2 cuts hard off the double stagger looking for a quick shot.

HALF-COURT: VILLANOVA 5 OUT DOUBLE



On 2's catch. The 4 will clear through to the opposite block. 5 will post up looking for the ball if 2 does not have a shot.

HALF-COURT: VILLANOVA 5 OUT DOUBLE



2 will look to feed the 5 man. 3 will cut through and interchange spots with the 1.