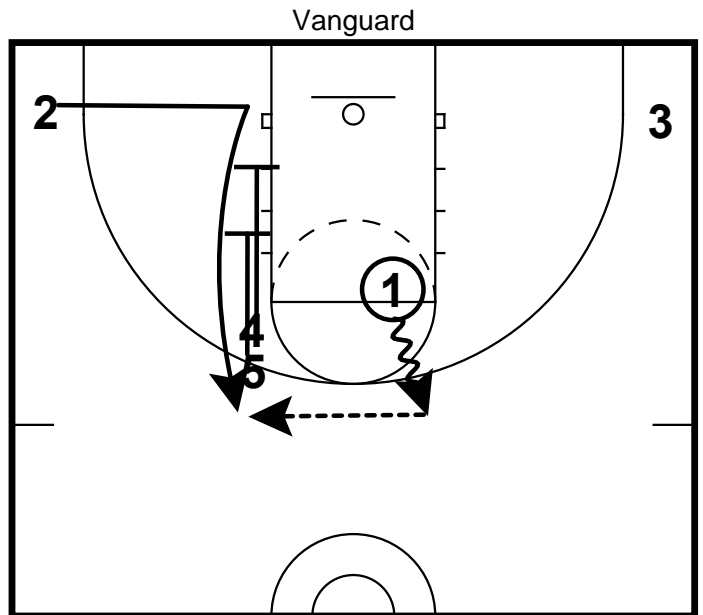
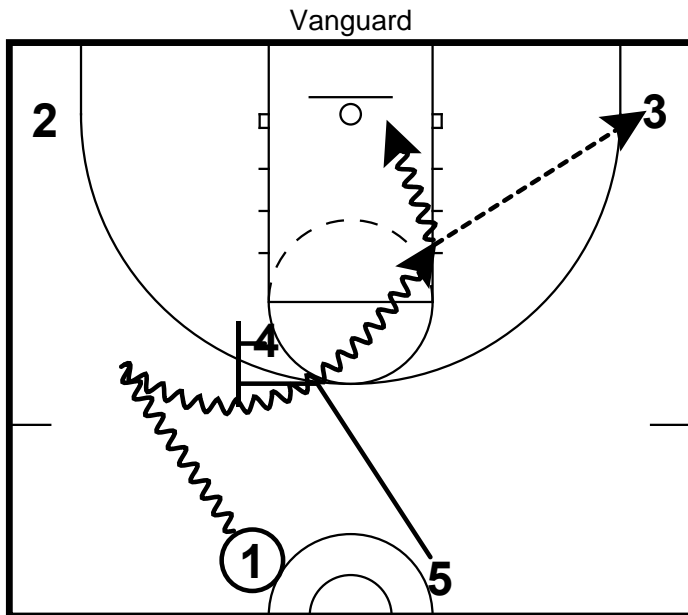
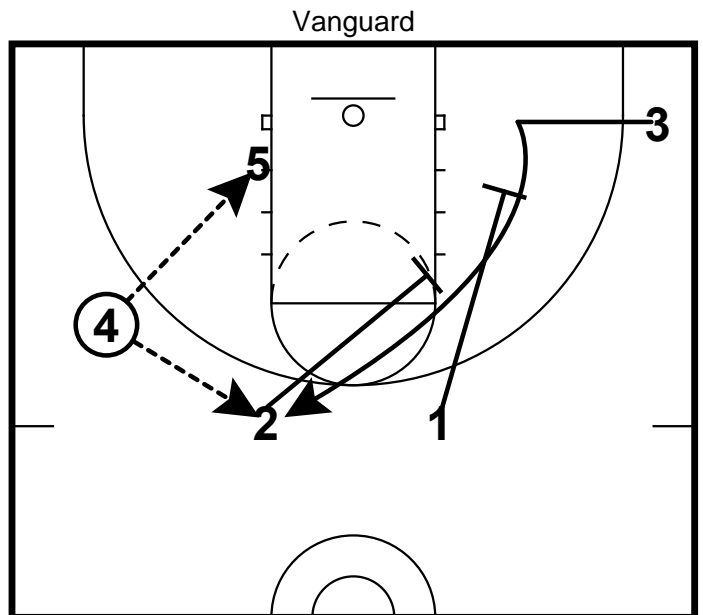
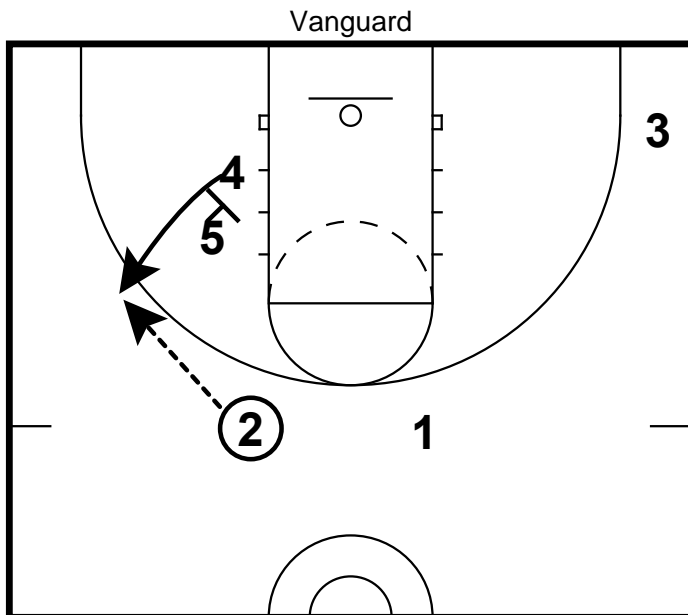


Double Drag Screen



Here is a double drag screen set by the trailing 5 and the forward 4. Point guard takes defender towards the wing, changes direction and gets a double ball screen from the 4&5. If the PG can turn the corner, he/she can finish at the rim or kick it out the shooter in the corner if their defender plugged the lane.

If the point guard can't take the corner, he/she finds the 2 guard, whose set up their cut and coming off a staggered down screen from the 4 & 5.



Once the point guard has reversed the ball to the 2, 2 has a shot or hits the 4 coming off a down screen from the 5. 5 seals and posts on the low block.

1 & 2 go set a staggered down screen for the 3. 4 opts to go inside or passes to the 3 for a shot coming off the screens.