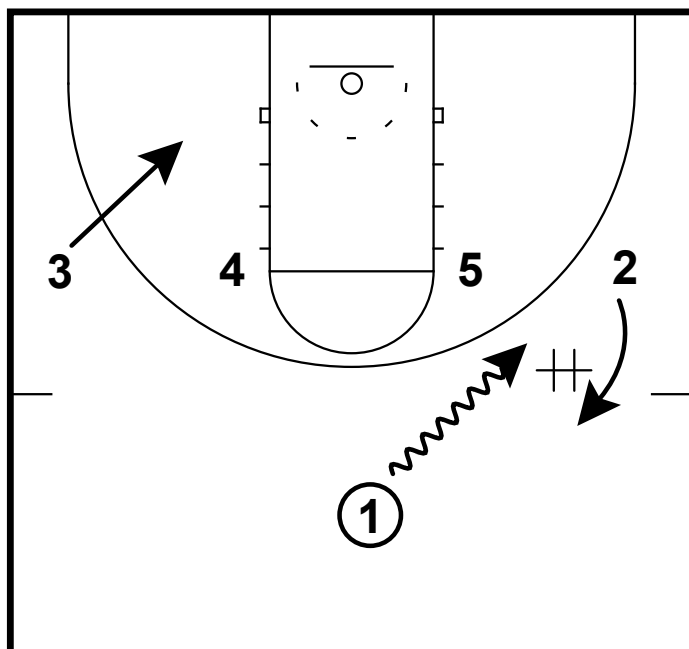
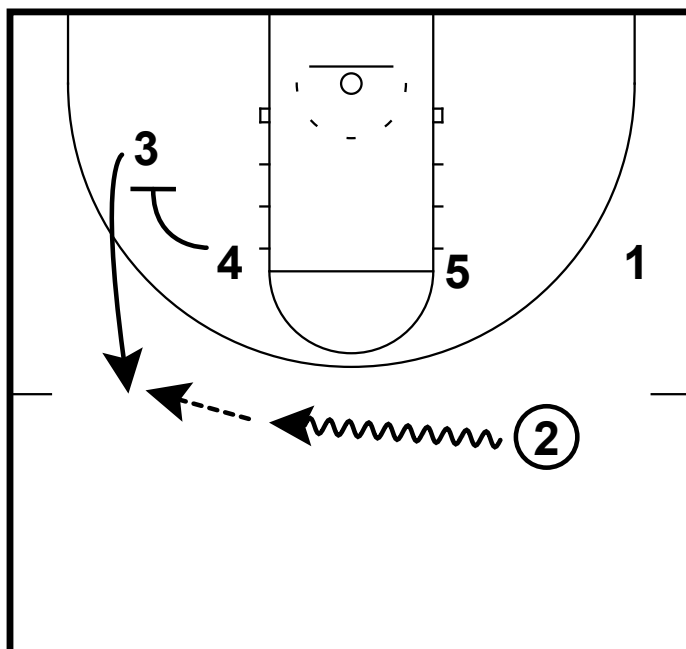


HALF-COURT: SDSU 1-4 HIGH/FLARE



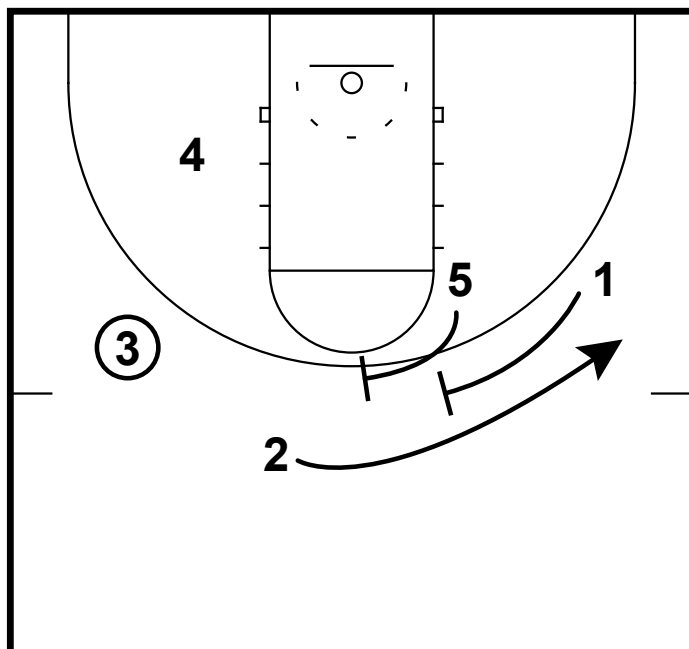
Here we have a 1-4 high alignment that turns into a double flare. 1 will dribble at the 2 for a handoff.

HALF-COURT: SDSU 1-4 HIGH/FLARE



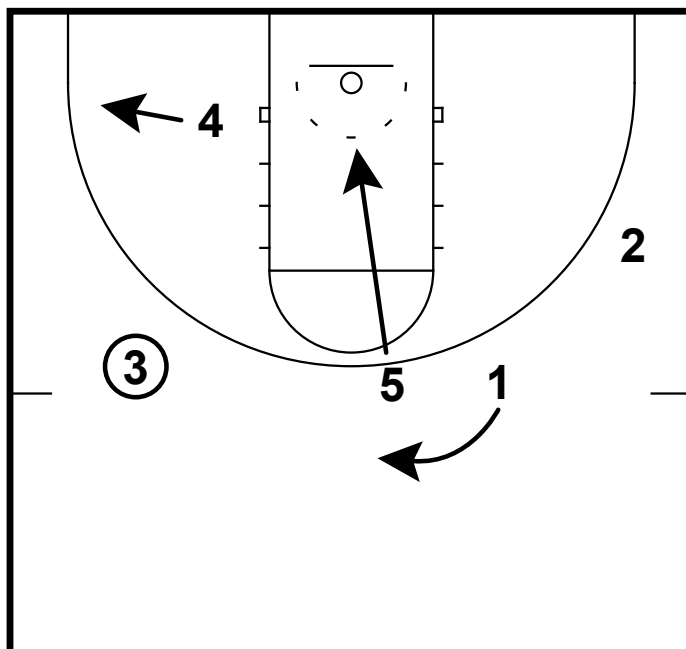
1 replaces 2's spot on the right wing. 2 dribbles over and hits 3 coming off of the 4's screen.

HALF-COURT: SDSU 1-4 HIGH/FLARE



After 2 passes to the 3. He will get a double flare screen from the 5 and 1. 3 looks pass to 2 for the open shot.

HALF-COURT: SDSU 1-4 HIGH/FLARE



If 2 is not open. The 5 will cut to the rim and the 1 will second cut up top for the ball reversal. 4 spaces out to short corner to clear space for 5's cut.