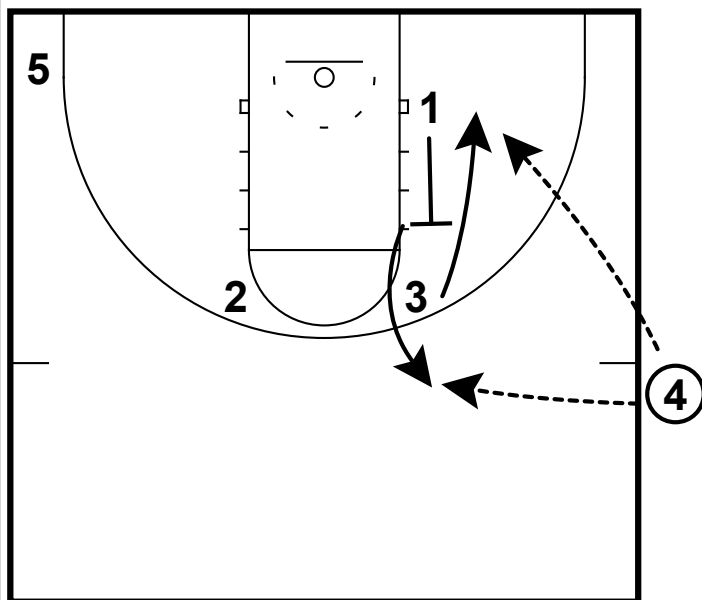
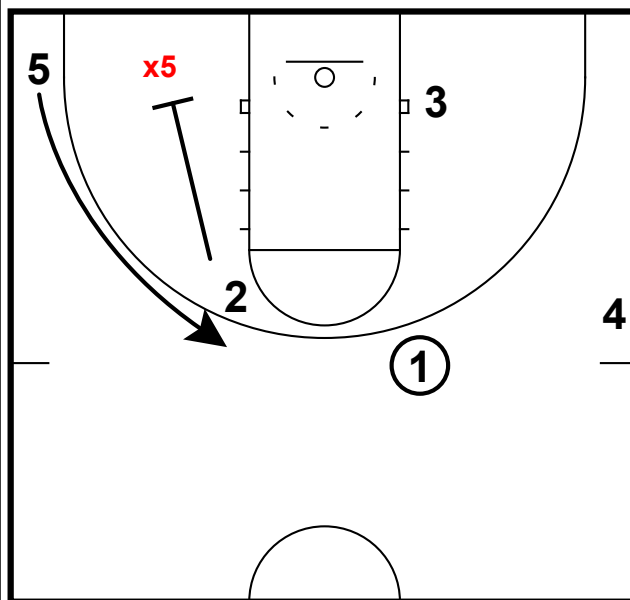


SOB: PRO BOX



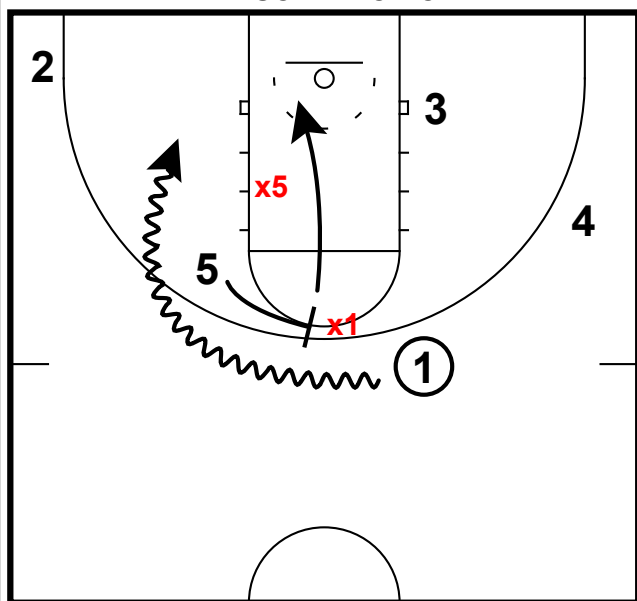
- 1) This is an original SOB that I created recently after watching some basketball. Having a 4 player who throw the ball in will be key here.
- 2) The NBA likes to use this off-set box set to create an angle for a back side screen.
- 3) Starting with a back screen here with the PG is different & could create a help situation to get the PG open at the top of the key or free up your best slasher going down hill.

SOB: PRO BOX



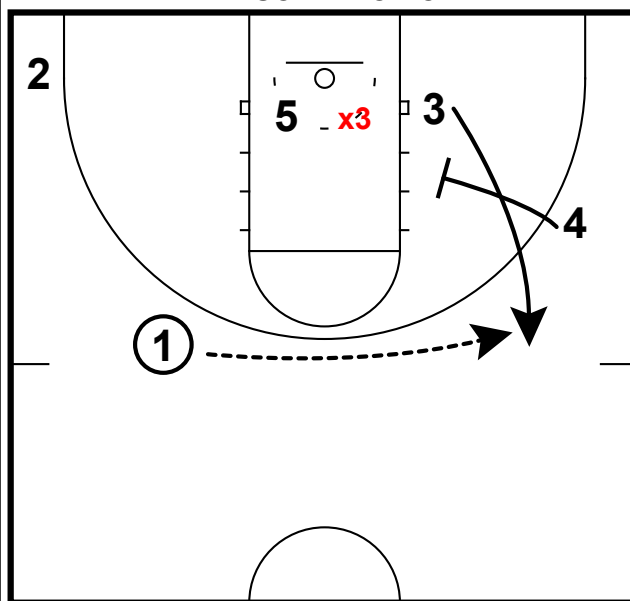
- 1) With the PG at the top of the key, we set a down screen for the 5 man.
- 2) Normally x5 won't be locked into your post player here because most post players are not a threat to shoot - which is great here because we want to set up the next action.

SOB: PRO BOX



- 1) If x5 does sag into the lane, it's going to create a great ball screen opportunity for the PG & not have to worry about getting a hedge from a taller post player.
- 2) This creates all sorts of scoring options - pull up jumper, kick to a shooter in the corner or a post roll in the lane.

SOB: PRO BOX



- 1) On the back side to clear out the helpside - we can pin-in the wing to create a jump shot opportunity or a 2 man chance.