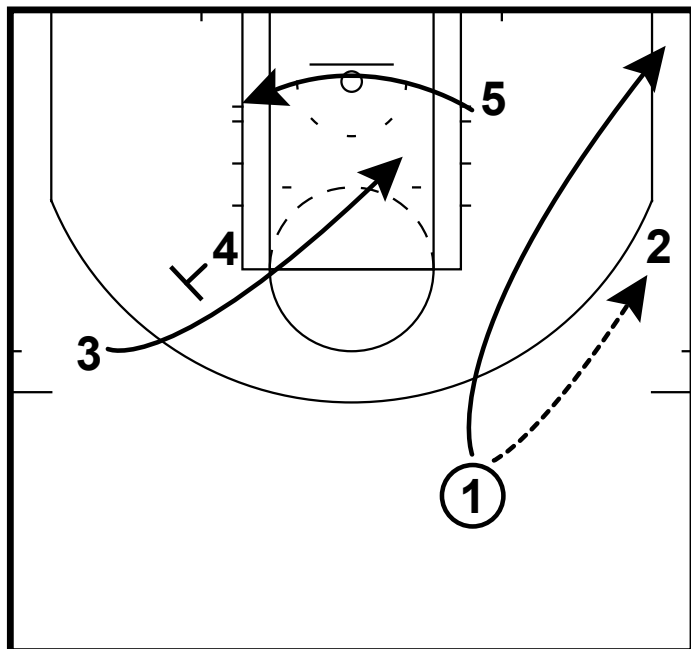
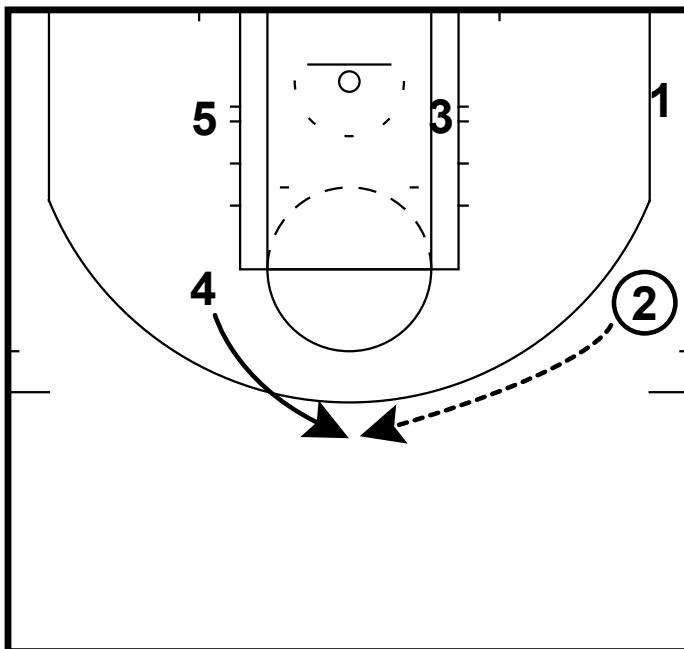


HALF-COURT: SPURS BASELINE DOUBLE



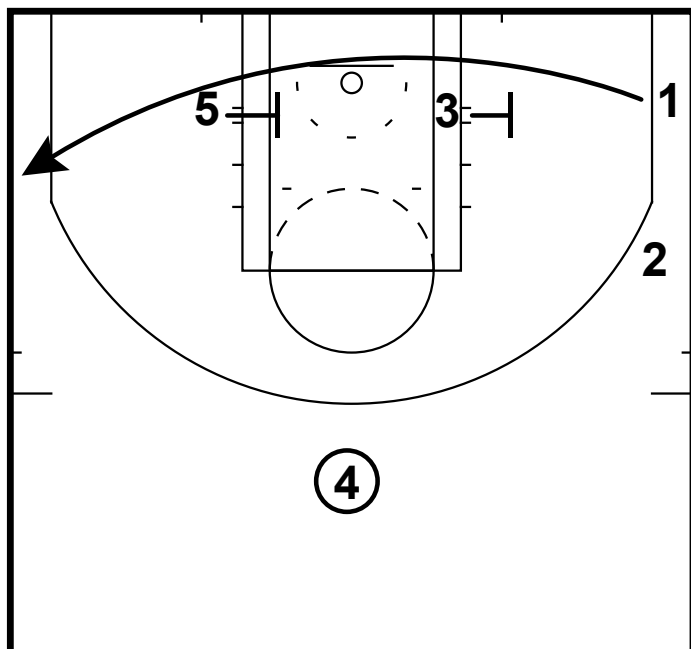
The Spurs are known for running lots of double and triple screens along the baseline to get shooters the ball. Here is a look from a baseline double set. The 1 passes to the 2 and 1 goes corner. 4 sets a back screen for the 3. While 5 cuts to the left block. If the 3 is open then the 2 will pass to him.

HALF-COURT: SPURS BASELINE DOUBLE



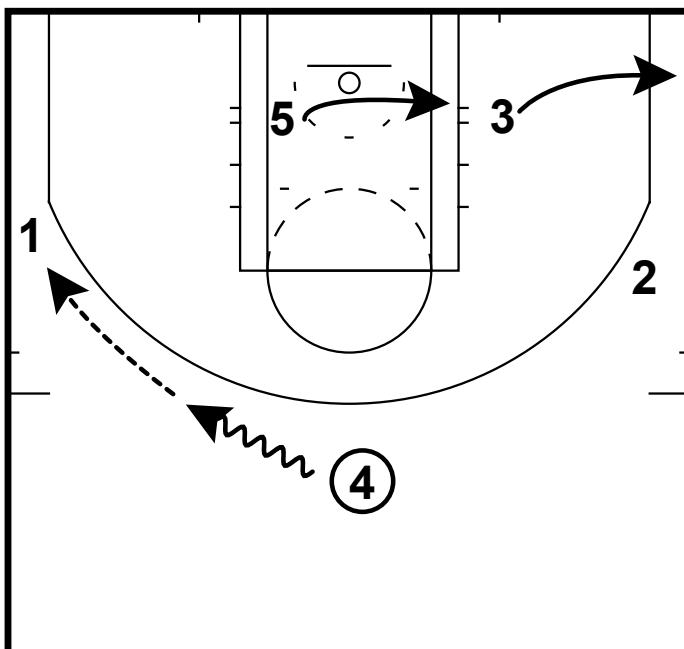
After the 3 cuts off the 4. The 4 will then pop up to the top of the key. The 2 man will pass him the ball.

HALF-COURT: SPURS BASELINE DOUBLE



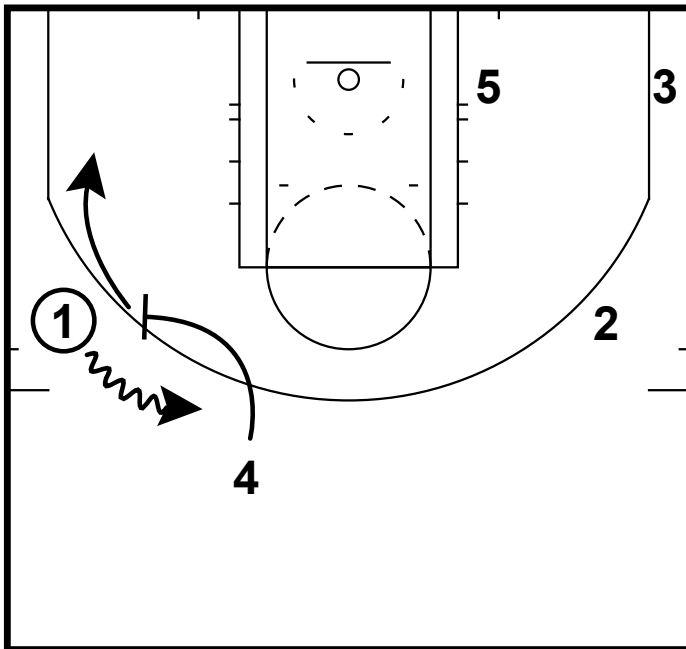
Now 5 and 3 will set the double screen for the 1. The 1 can look to curl off the 5 if that is available. 1 is catching the ball looking to make a play.

HALF-COURT: SPURS BASELINE DOUBLE



4 can dribble over to create a better passing angle if he needs to. The 5 and 3 will space out.

HALF-COURT: SPURS BASELINE DOUBLE



If the 1 does not have a shot. The 4 man can follow his pass and ball screen for the 1. The 4 has the freedom to roll to the rim or pop out for the jump shot.