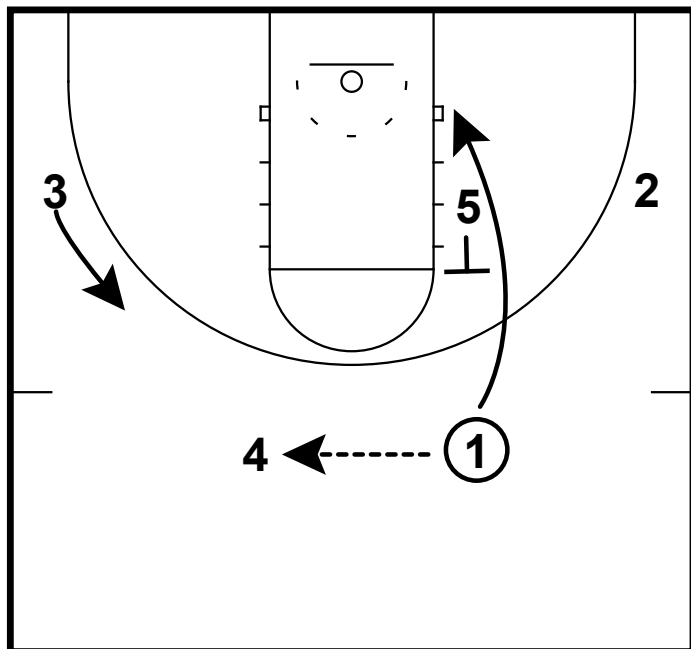
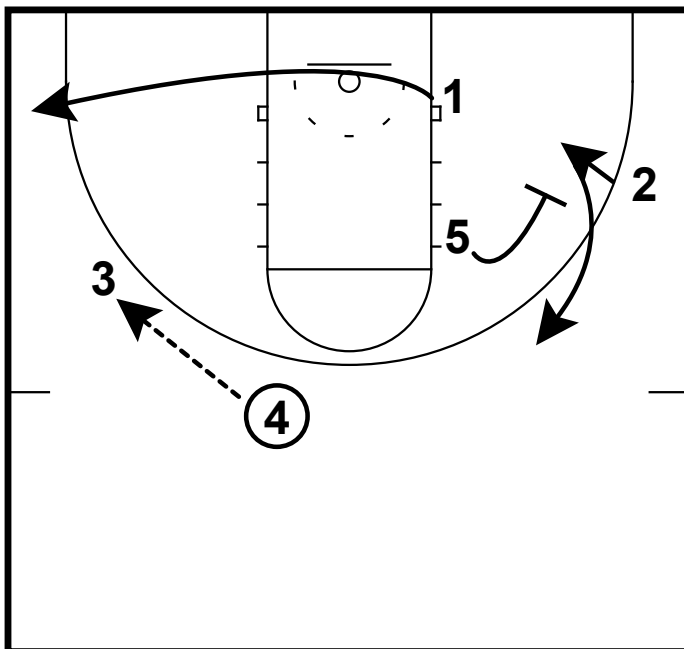


HALF-COURT: WISCONSIN BACKSCREEN



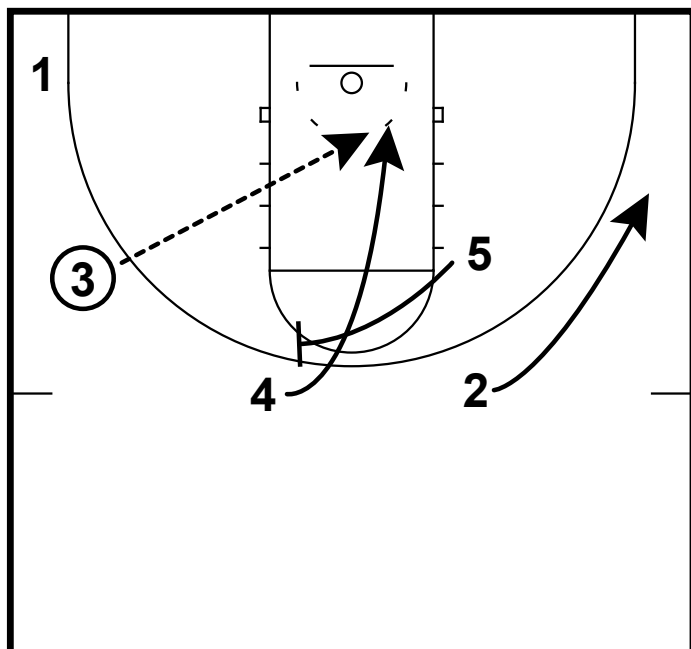
This is a 4 around 1 alignment from Wisconsin. Bo Ryan's teams have always done an excellent job moving without the basketball. Here 1 passes to 4. 1 now will cut off of 5's UCLA screen.

HALF-COURT: WISCONSIN BACKSCREEN



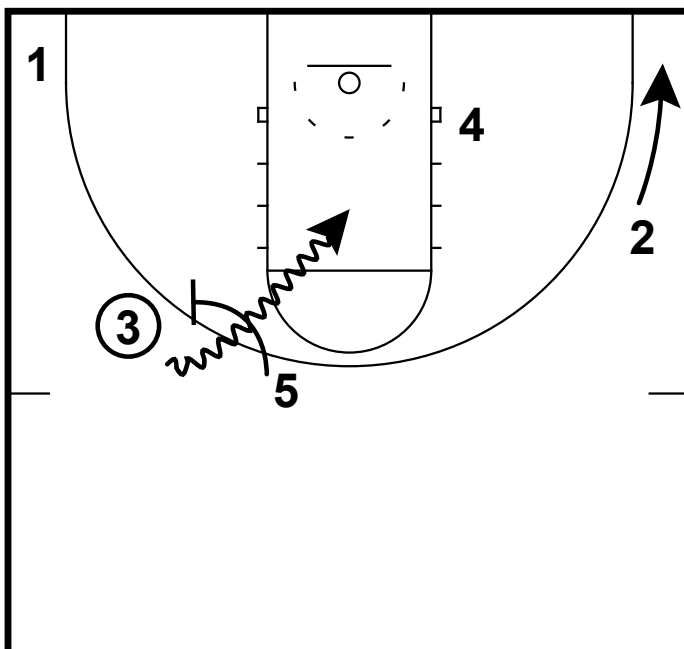
After 5 screens he will then turn and screen away for the 2 man. The 4 man will reverse the ball to the 3.

HALF-COURT: WISCONSIN BACKSCREEN



1 will clear out to the left corner. After the 4 passes to 3. He will now cut off of 5's backscreen looking for a lob pass from the 3. 2 spaces out to the wing.

HALF-COURT: WISCONSIN BACKSCREEN



If the 4 does not get the ball. 5 will ball screen for the 3. 3 looks to drive as deep into the paint as possible. 2 spaces to the corner to flatten the defense.