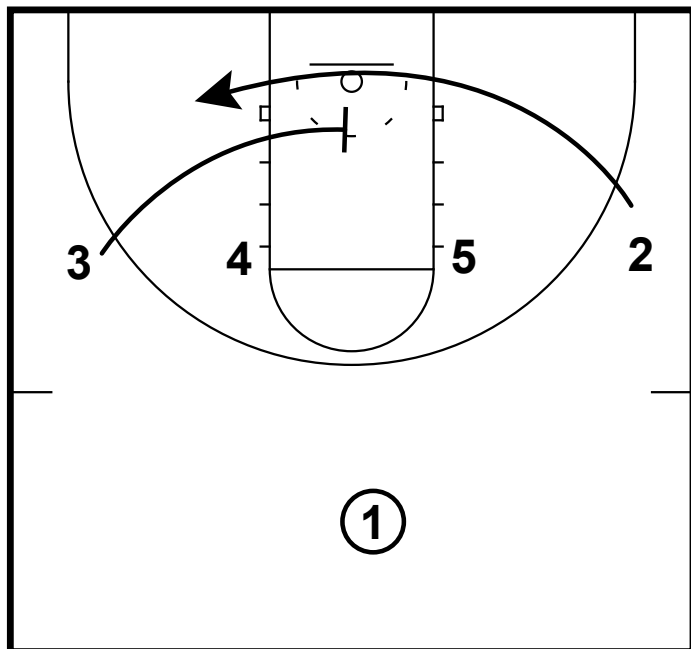
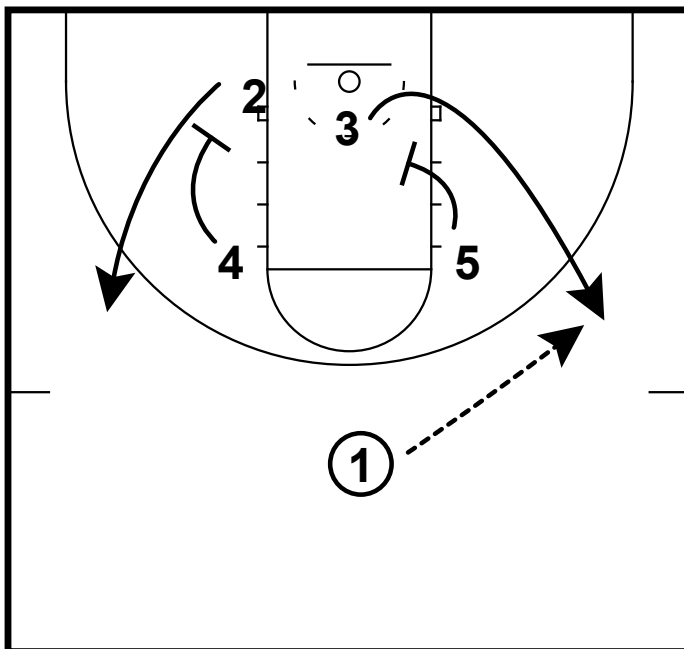


HALF-COURT: 1-4 HIGH SINGLE/DOUBLE



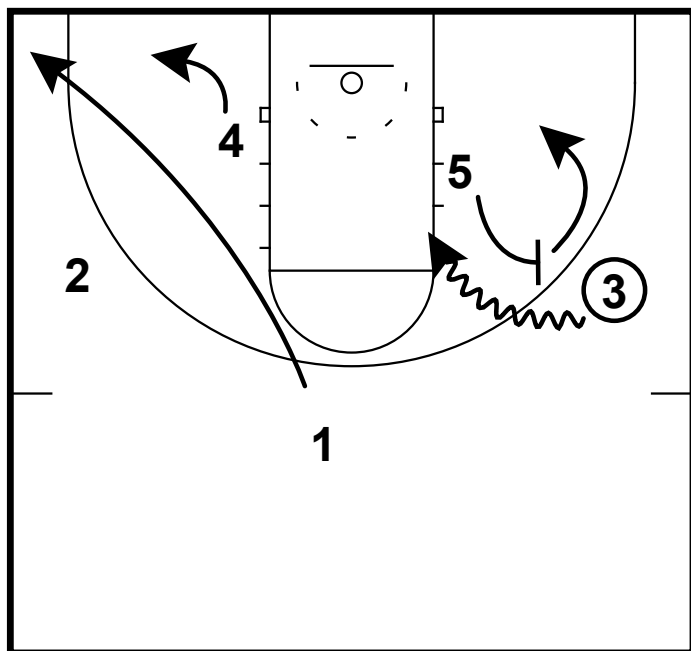
Here is some basic but effective way to get your best scorer an opportunity to score the ball. We start out in a 1-4 high alignment. 3 will go low and set a screen for the 2 man.

HALF-COURT: 1-4 HIGH SINGLE/DOUBLE



2 will come off the screen and get another screen from the 4 man. After 3 screens for the 2 he will then get a screen from the 5. 1 will hit the 3 man.

HALF-COURT: 1-4 HIGH SINGLE/DOUBLE



1 will cut to the left corner after passing to the 3 man. This opens up a two man game situation. Here we have 5 setting a side ball screen for the 3 to use and make a play. 5 can roll or pop out. 4 goes short corner to help take away the defense.