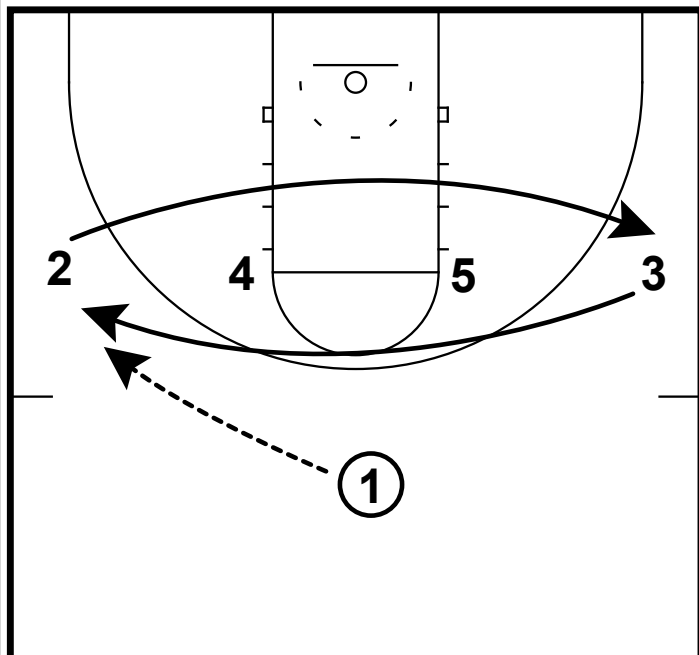
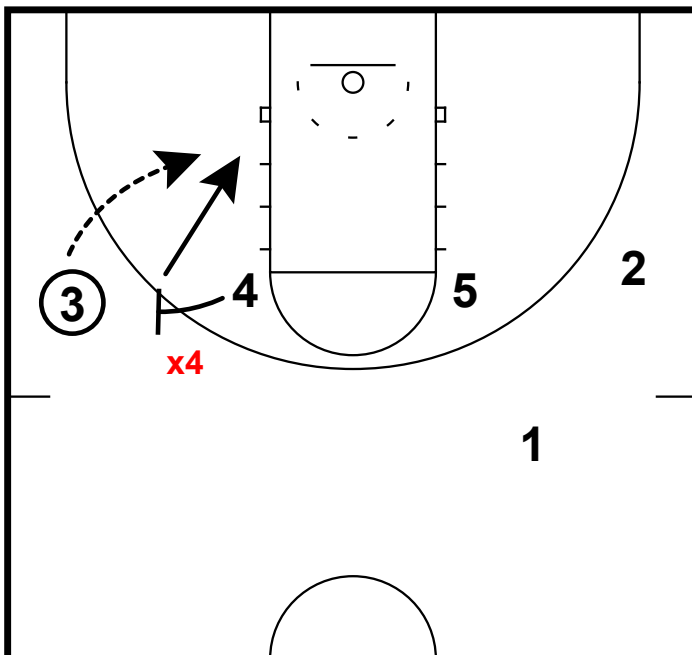


JEFF WALZ: 1-4 HIGH BALL SCREEN



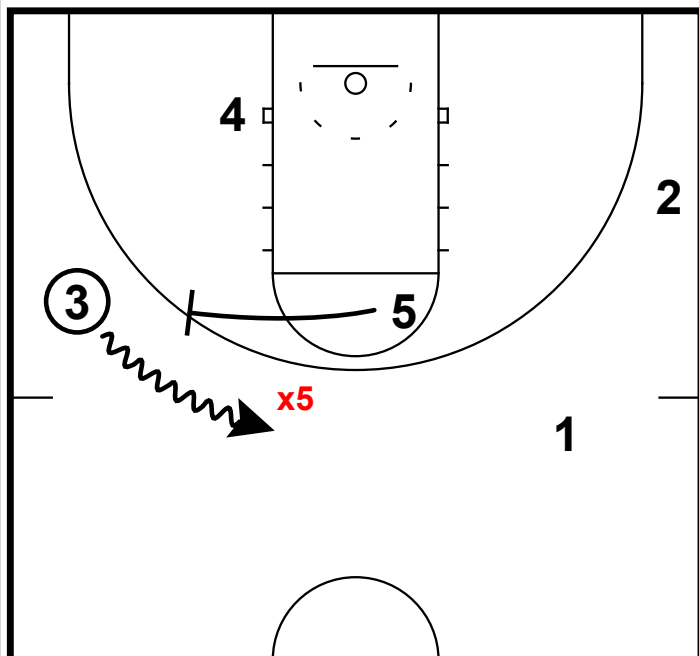
- 1) In this 1-4 high set, they exchange the wings for one another.
- 2) Entering the ball on the wing after the action makes it easier to start in the half court.

JEFF WALZ: 1-4 HIGH BALL SCREEN



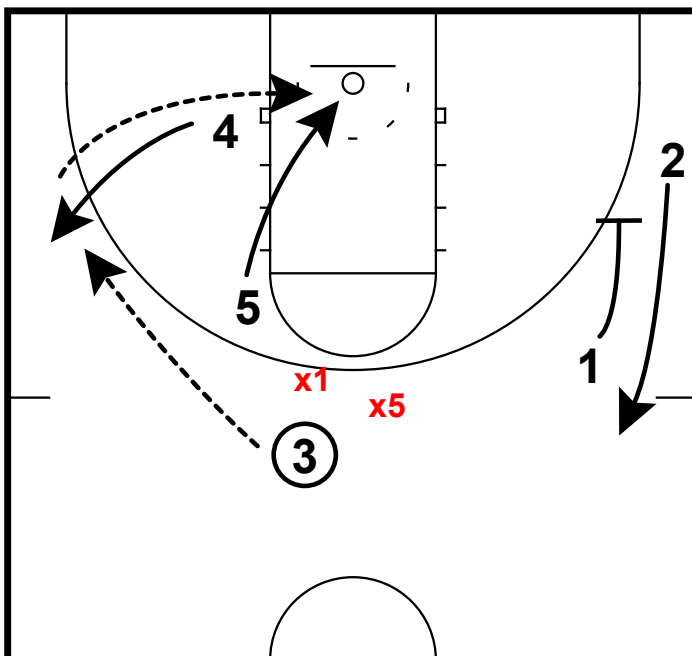
- 1) With the 3 player on the wing with the ball, 4 will step out to set a ball screen.
- 2) This set should be ran against teams that jump the ball screen hard.
- 3) If **x4** hedges hard, 4 will be open on the quick slip to the bucket.

JEFF WALZ: 1-4 HIGH BALL SCREEN



- 1) More than likely, the 2nd ball screen will be the action that creates a scoring opportunity
- 2) If **x5** helps on the dive from 4, 3 should be able to get into the lane.
- 3) If not - 3 should stretch the hedge out to the top of the arc.

JEFF WALZ: 1-4 HIGH BALL SCREEN



- 1) If 3 can stretch the defense out to the top of the key, this opens up the back side action.
- 2) 4 pops out to the wing, while 5 dives to the hoop.