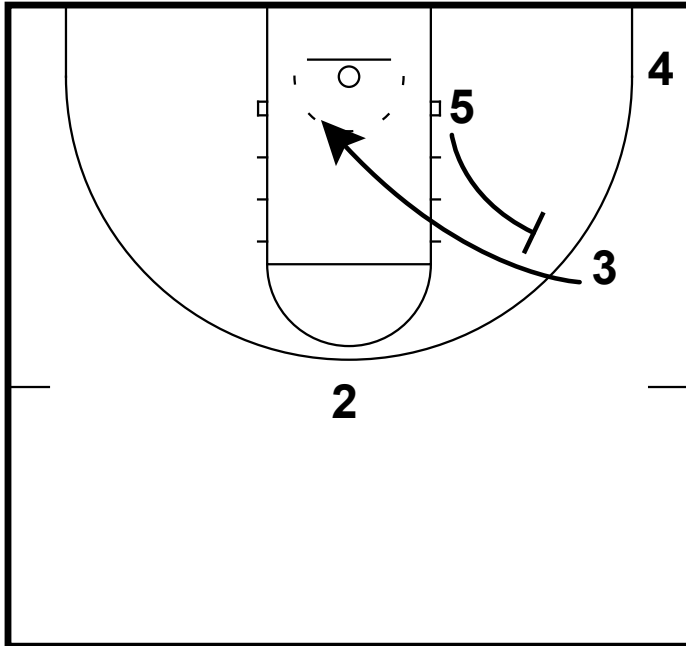


JEFF WALZ: ILLINOIS

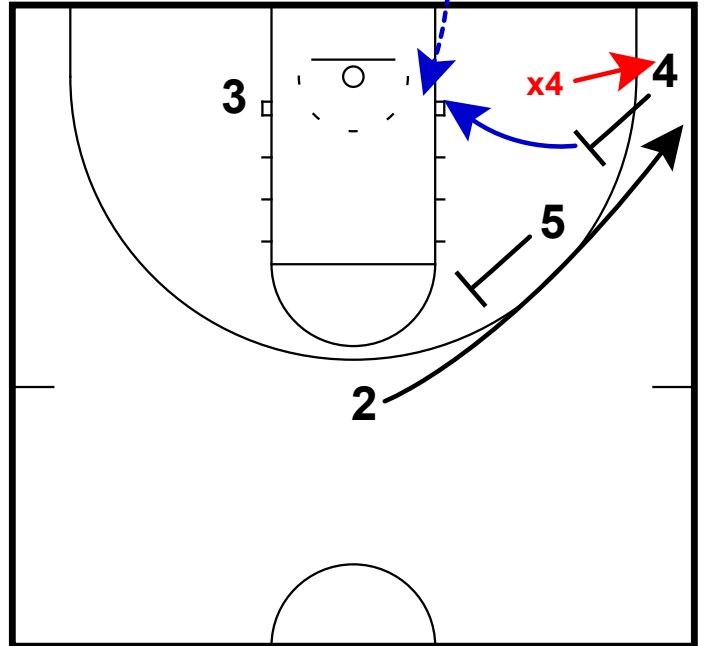
①



1) This overload set starts with a back screen for the wing.

JEFF WALZ: ILLINOIS

①



1) Once the back screen occurs, 4 & 5 turn to set a double screen for 2.  
 2) What we would really like to have happen is for x4 to extend the screen & then have 4 slip hard to the rim.