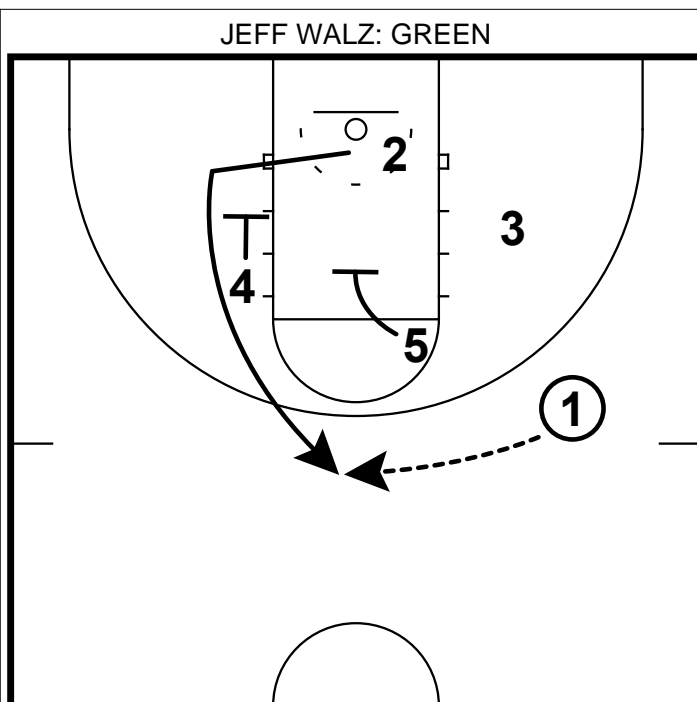
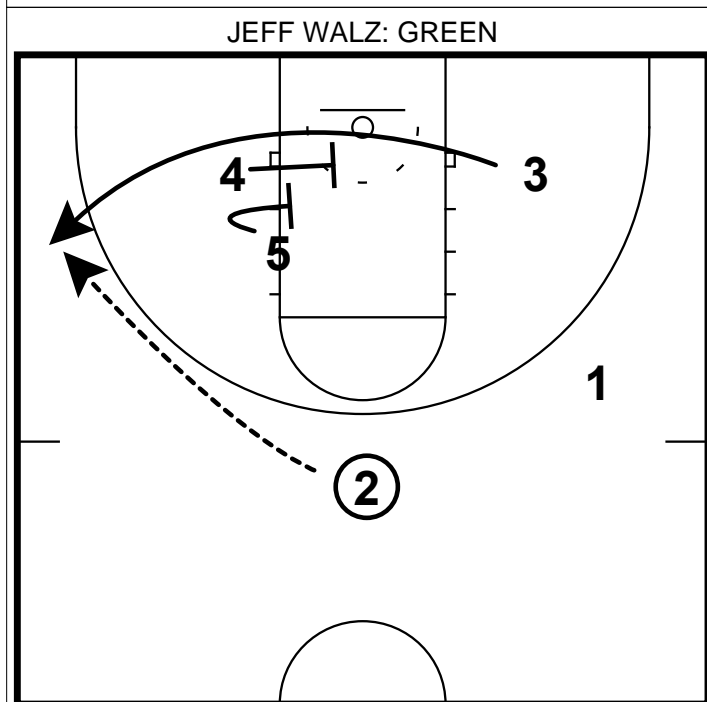


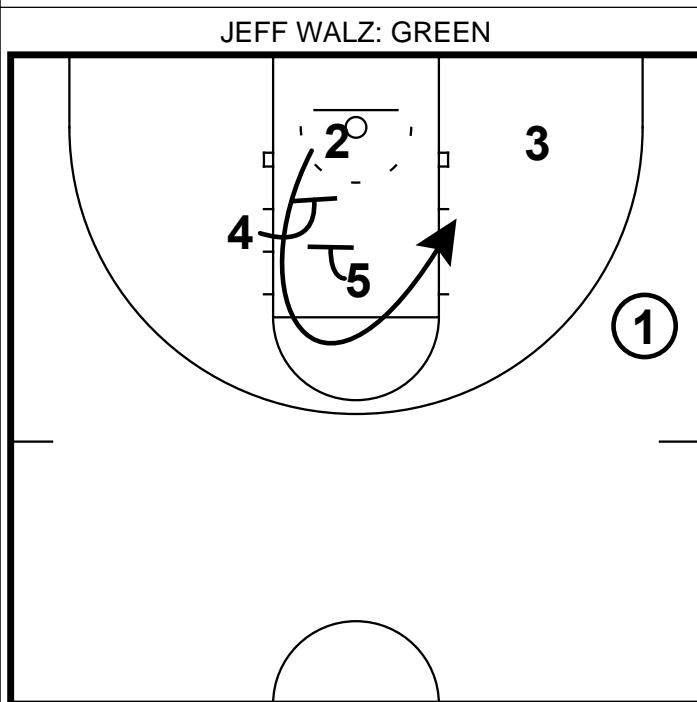
1) Out of this box set, the point guard will dribble to one wing which will pull the opposite guard off of a screen.
 2) That guard will curl around to the ball side block.



1) Once the initial cut has occurred, the other guard will come off of a double pin down screen from each post.



1) This sets up the third cut for the same wing who started the action.
 2) Both post players will come together for another double screen, which should set up an open shot.



1) An alternate option here would be if 2 curls the 2nd double screen.
 2) This will set up the action in frame 5.

