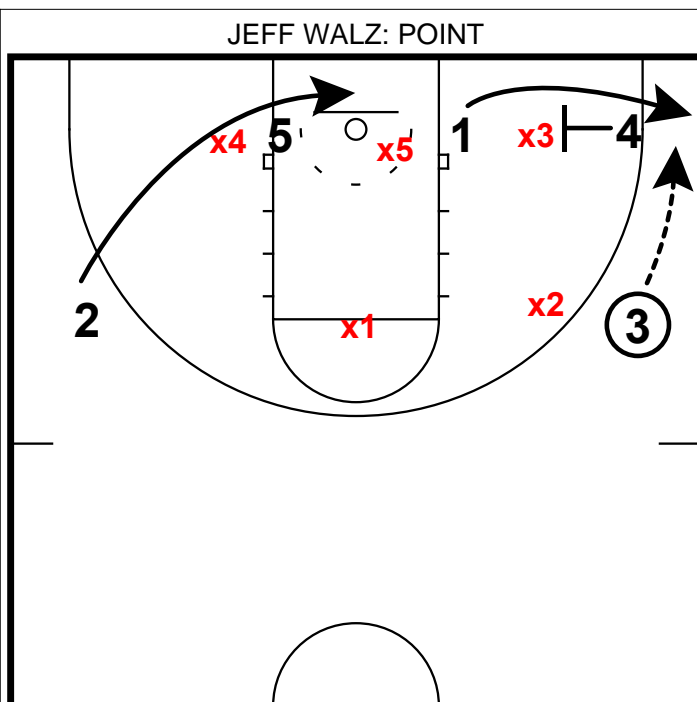
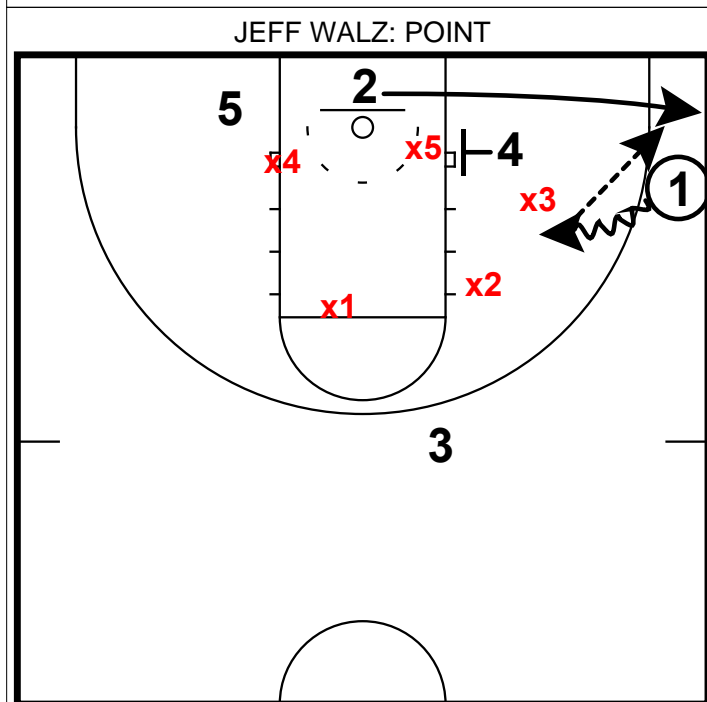


- 1) This zone offense starts much like many other half-court zone offenses in a 3 out 2 in set with the post players inside.
- 2) This offense starts with a pass to the wing and the ball side post stepping to the corner, while the PG moves to the ballside block.



- 1) Now the ball side post will pin-in for the point guard to the corner.
- 2) Meanwhile 2, who should be your best shooter moves underneath the bucket to set up the next action.



- 1) With the ball in the corner, it is important that the PG drives the ball into the teeth of the defense - **NOT** up the arc. That would lead to a simple bump.
- 2) 4 will pin-in the middle man of the zone to free up space. **x3** will be occupied by the ball & 2 should have an open shot.