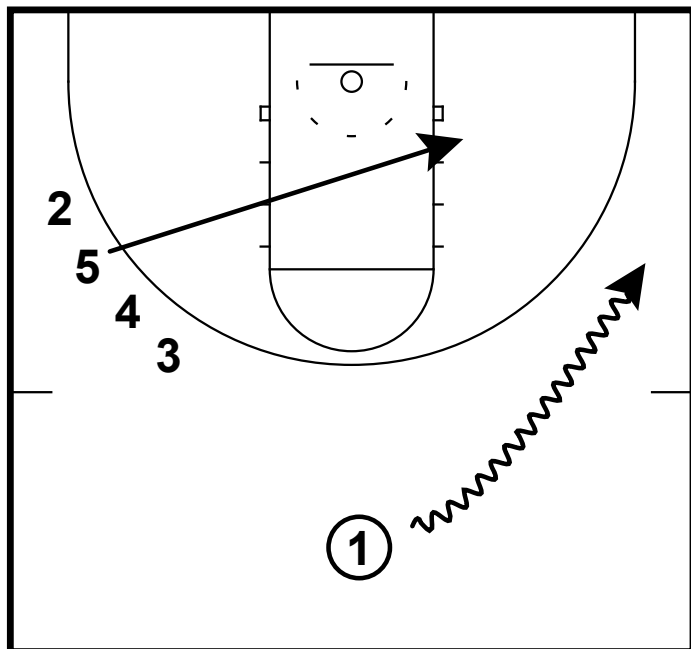
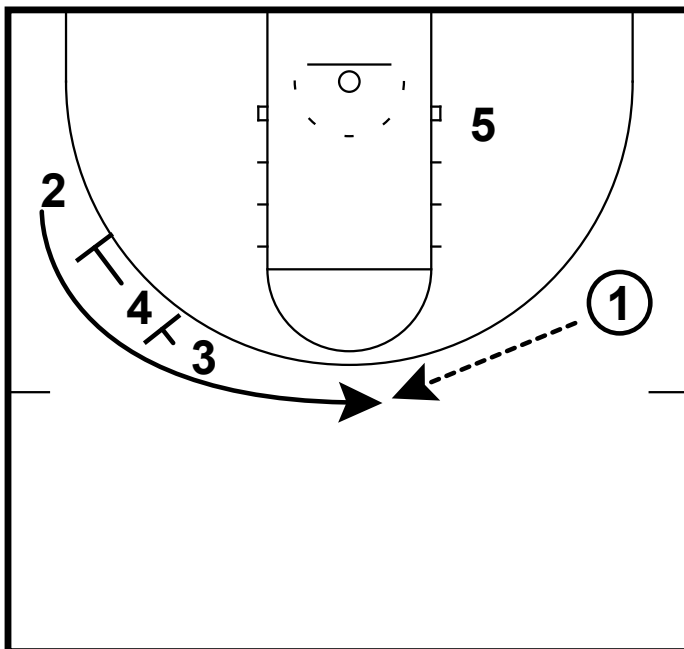


HALF-COURT: LOUISVILLE ISO/SHOOTER



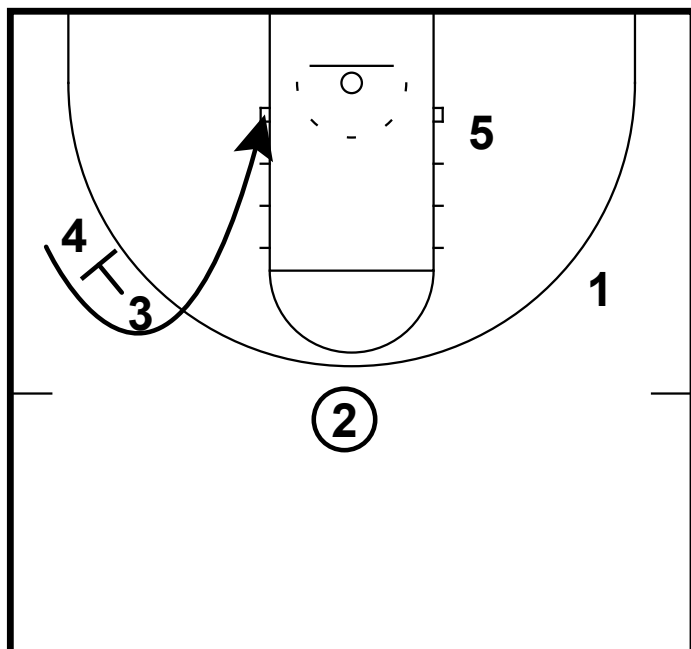
Here is a isolation set from the Louisville women's team. They clear out the entire right side of the floor. If the 1 can attack the rim she has the freedom to do so. If not then she will dribble the arc as 5 cuts hard to the right side block.

HALF-COURT: LOUISVILLE ISO/SHOOTER



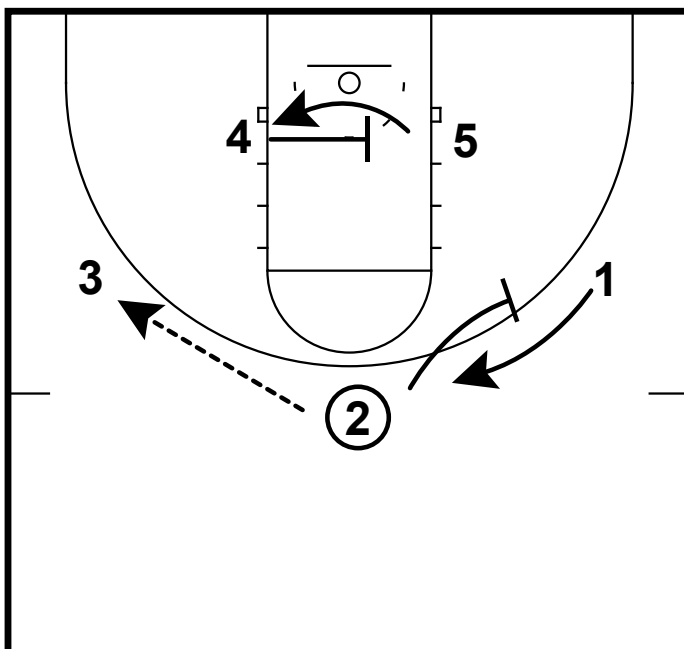
After the 5 cuts. The 4 and the 3 will set a double screen for the 2. 2 cuts hard looking for the shot.

HALF-COURT: LOUISVILLE ISO/SHOOTER



If the 2 does not have a shot then the 3 will screen for the 4. 4 curls tight off the screen and the 3 will second cut back out. 3 could have an open look right here.

HALF-COURT: LOUISVILLE ISO/SHOOTER



After 3 second cuts. The 2 will reverse the basketball. On the catch the 4 will screen away for the 5 and the 2 will screen away for the 1.