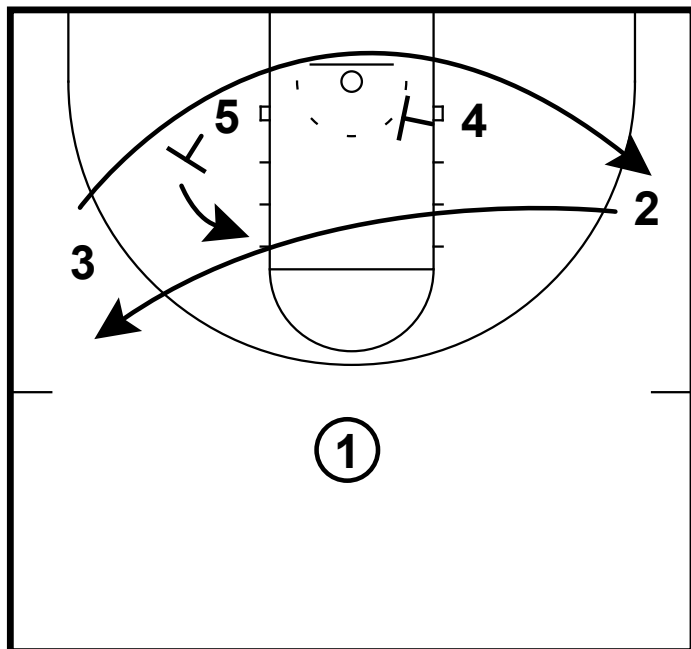
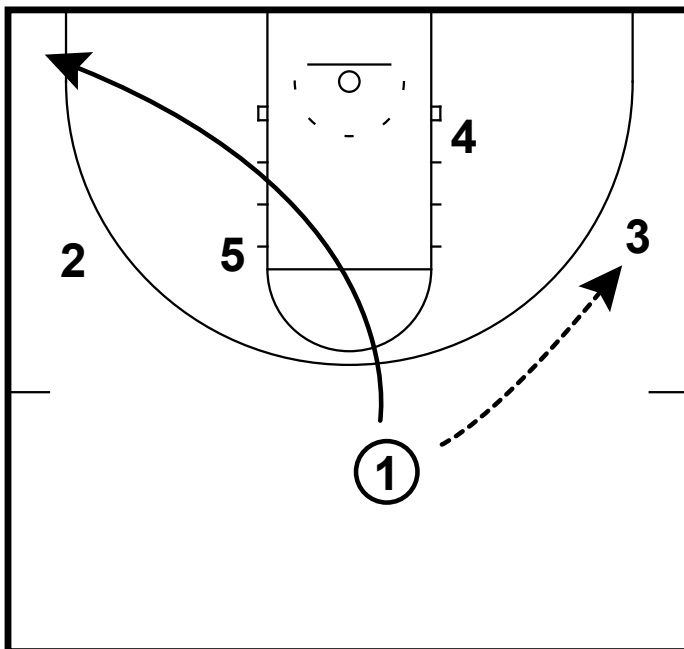


HALF-COURT: MINNESOTA CROSS



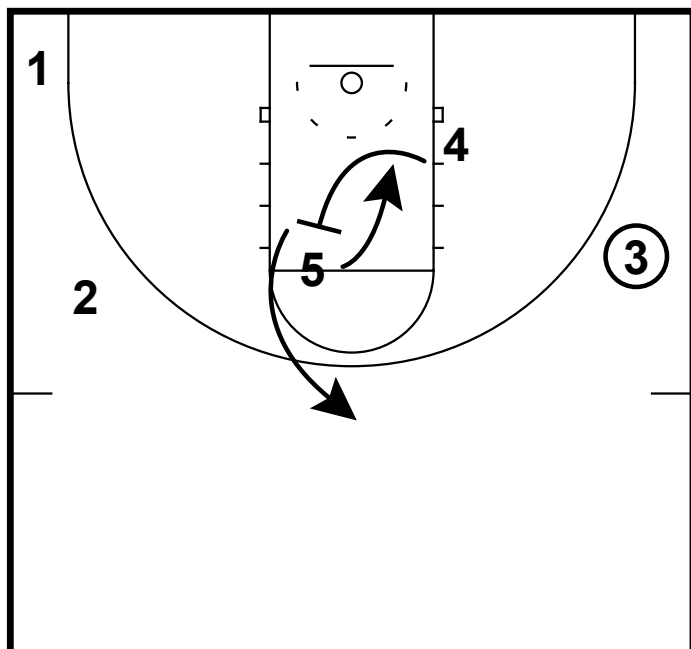
Here is a quick hitter from Minnesota they ran multiple times in this years NIT. They start out in their 3 around 2 set. 3 cuts low off of screens from the 5 and 4. He can look to score when he catches the ball. 2 cuts high to the left side of the floor.

HALF-COURT: MINNESOTA CROSS



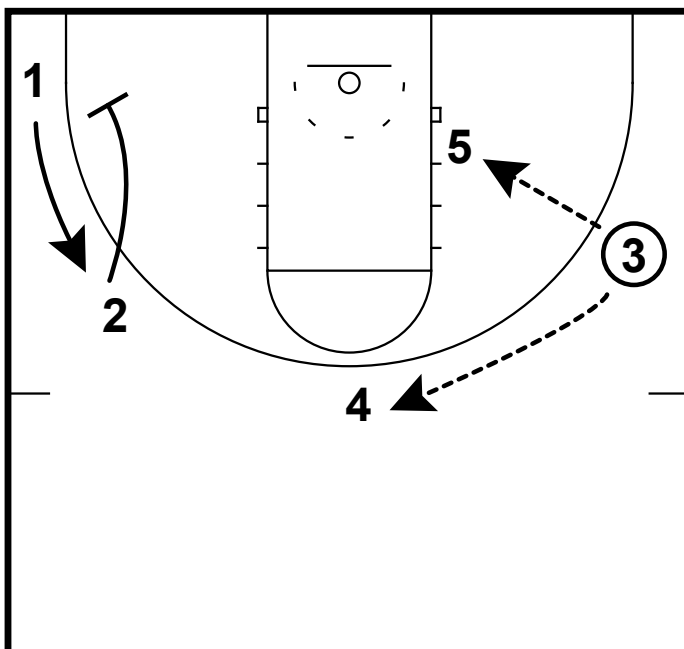
When the 1 passes to the 3 he will cut to the opposite corner. 3 can look to hit 4 on the block.

HALF-COURT: MINNESOTA CROSS



If the 4 does not get the ball he will go back screen for the 5 man. The 5 will cut high off of 4's screen.

HALF-COURT: MINNESOTA CROSS



The 3 will hit 5 if he is open while cutting. The 4 will second cut and replace up top. If 5 is not open then the 3 will pass up to 4. 2 will go screen away for the 1.