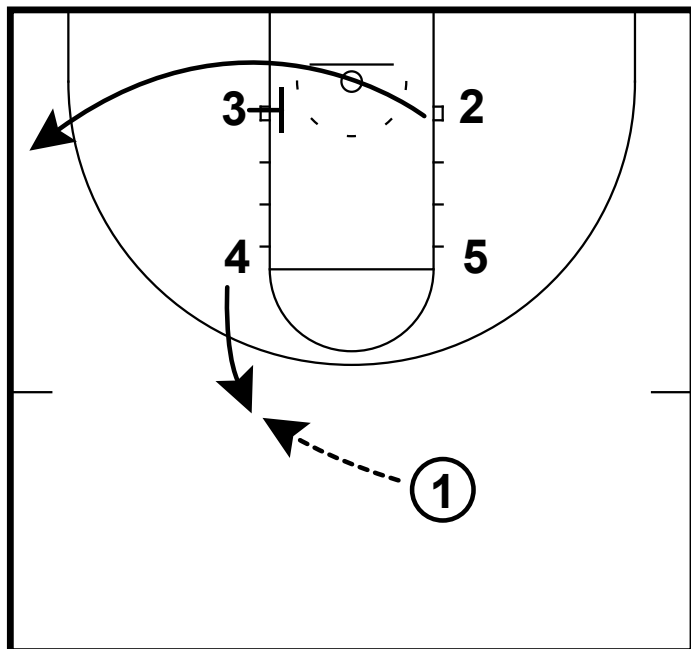
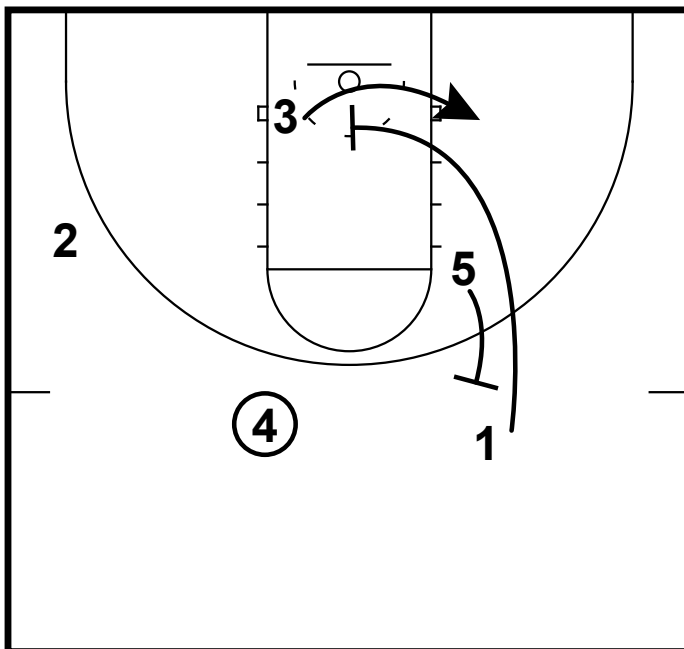


HALF-COURT: ST. LOUIS BOX



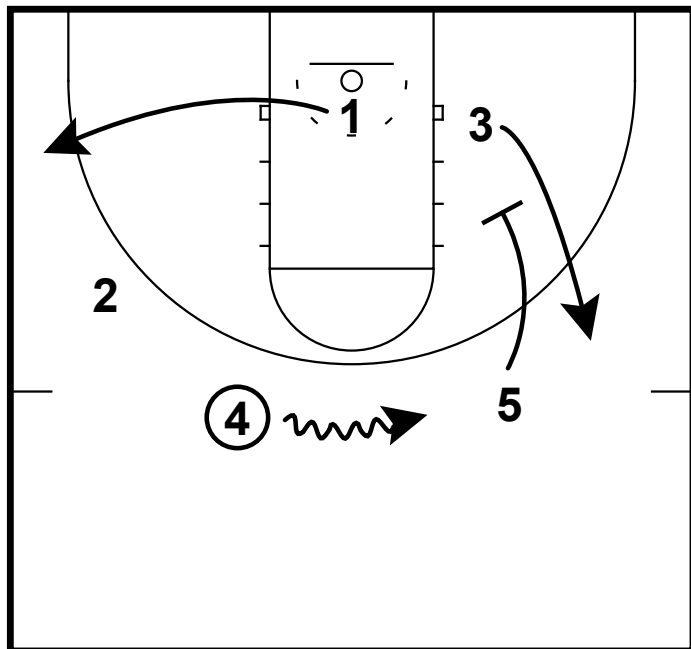
Here is a box set that is designed to get your two best shooters the ball. You start in a box set with your best shooter in the 3 spot. Your second best shooter is in the 2 spot. 4 pops out and gets the pass from 1. 2 will cut hard off 3's screen.

HALF-COURT: ST. LOUIS BOX



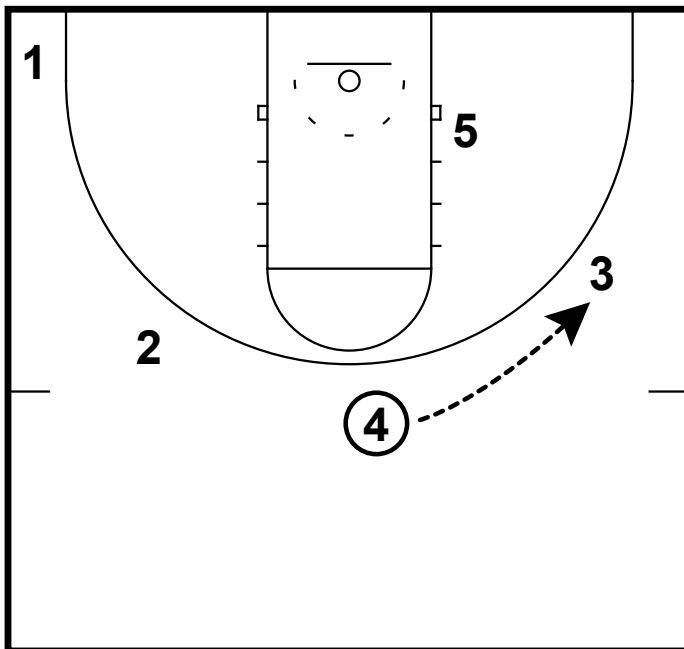
5 will back screen for the 1. 1 cuts off the screen and goes to screen for the 3.

HALF-COURT: ST. LOUIS BOX



5 will turn and also screen for the 3. 4 will dribble over to creat a better passing angle. 1 spaces out.

HALF-COURT: ST. LOUIS BOX



4 will pass to the 3 who is looking to catch and shoot.