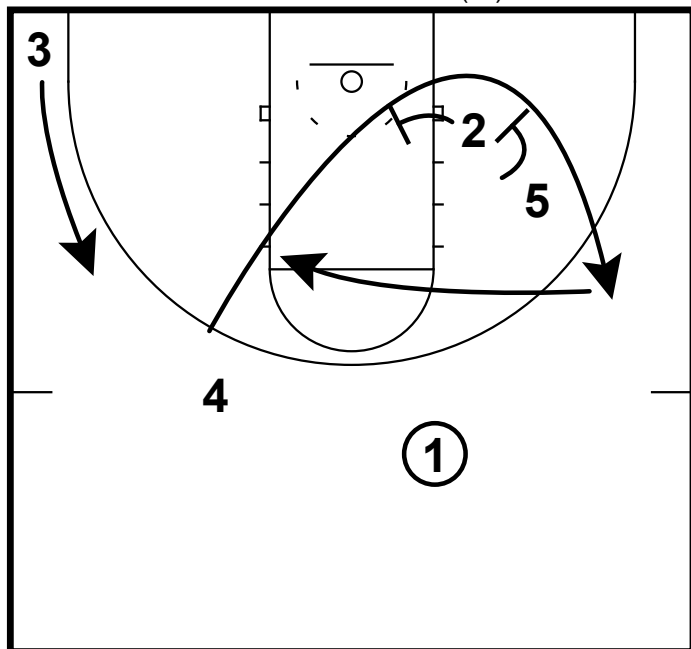
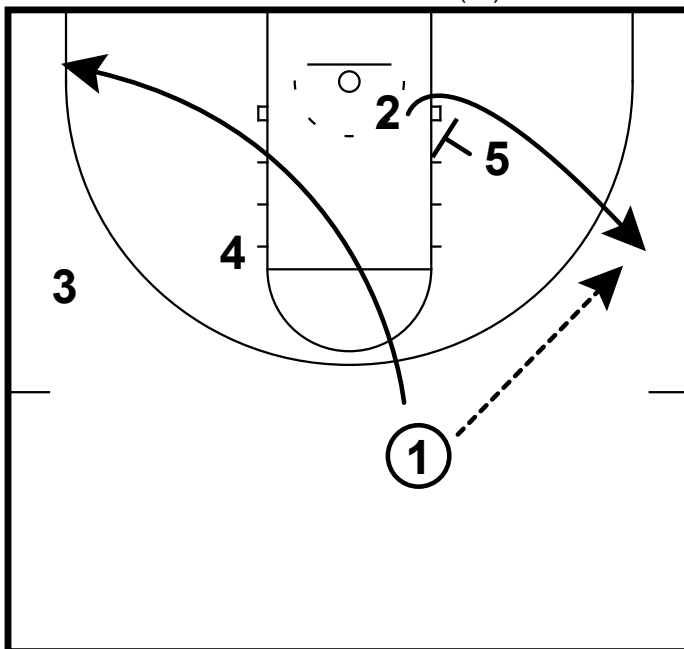


HALF-COURT: WEST VIRGINIA(W) HIGH LOW



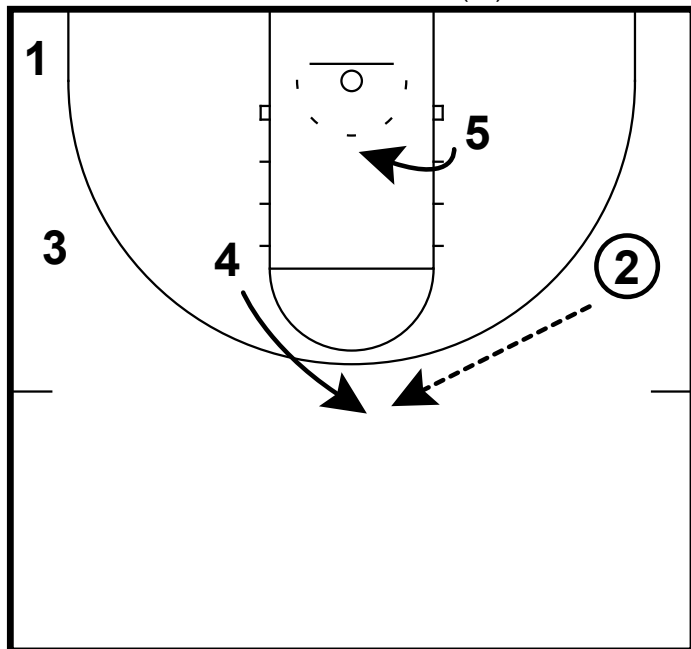
This high low action comes from the West Virginia women's team. 4 starts off by basket cutting and looping around screens from the 2 and 5. The 4 loops all the way around to the left elbow. 3 starts in corner and cuts up high.

HALF-COURT: WEST VIRGINIA(W) HIGH LOW



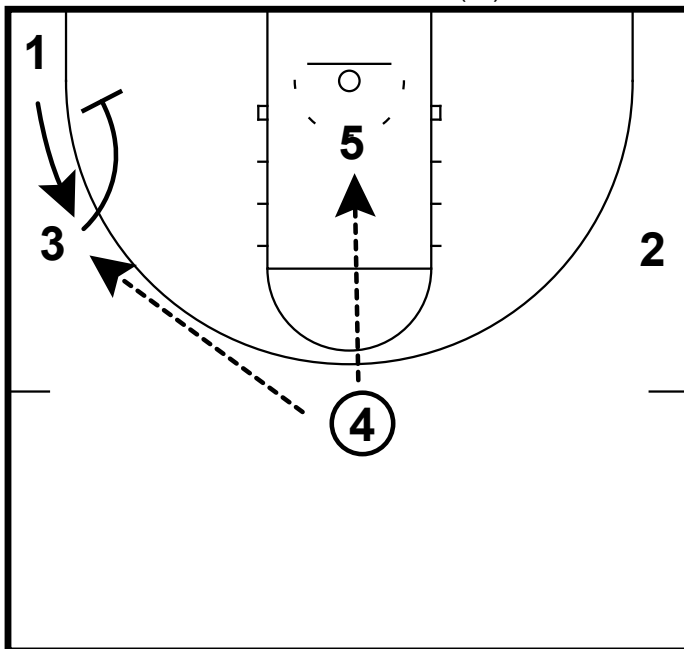
When the 4 settles on the elbow the 5 will screen for the 2. 1 will pass to the 2 and cut to the left corner.

HALF-COURT: WEST VIRGINIA(W) HIGH LOW



The 4 cuts up high and the 2 will pass to the 4. 5 will seal her defender.

HALF-COURT: WEST VIRGINIA(W) HIGH LOW



4 will look to pass to the 5 for a high low opportunity. 3 will go screen for the 1 to try and take away the help. If the 5 is not open the 4 will pass to the 1. This action flows right into their half court offense.