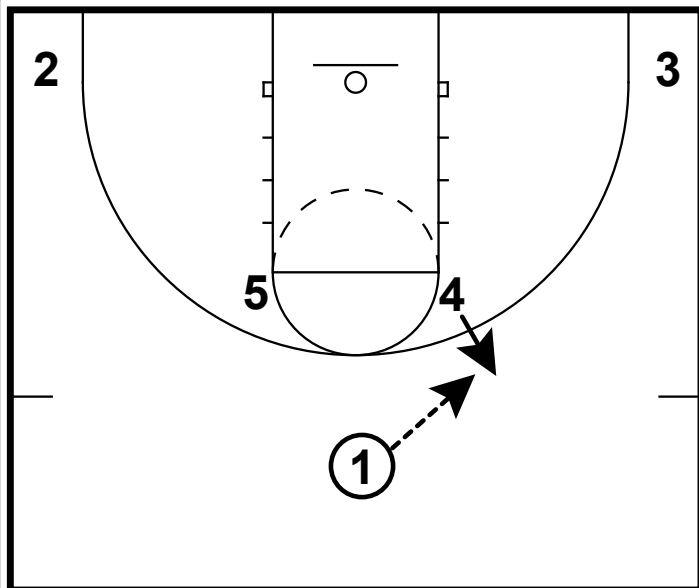


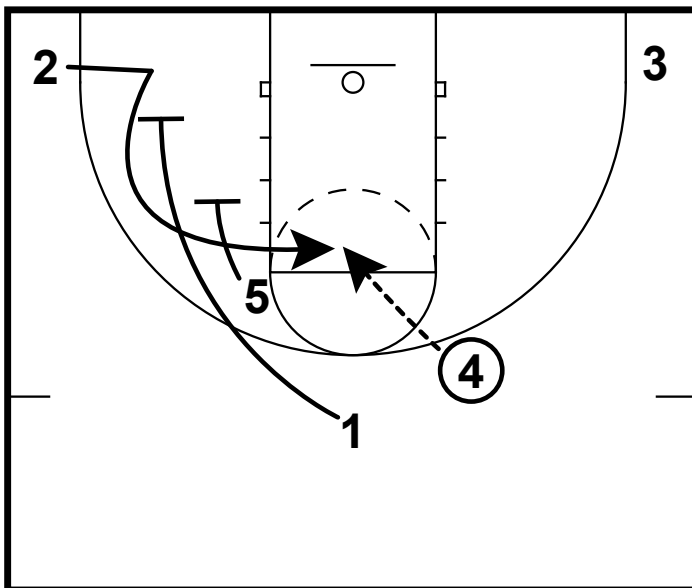
HALF-COURT: HORNS DOUBLE



This was the camp offense that we implemented at our EBA Super 64 Camp in June of 2014. Out of a Horns set, we entered the ball to a post player around the elbow to arc area.

This is a good camp offense since many camps are guard heavy and virutally every position in this offense is interchangeable.

HALF-COURT: HORNS DOUBLE

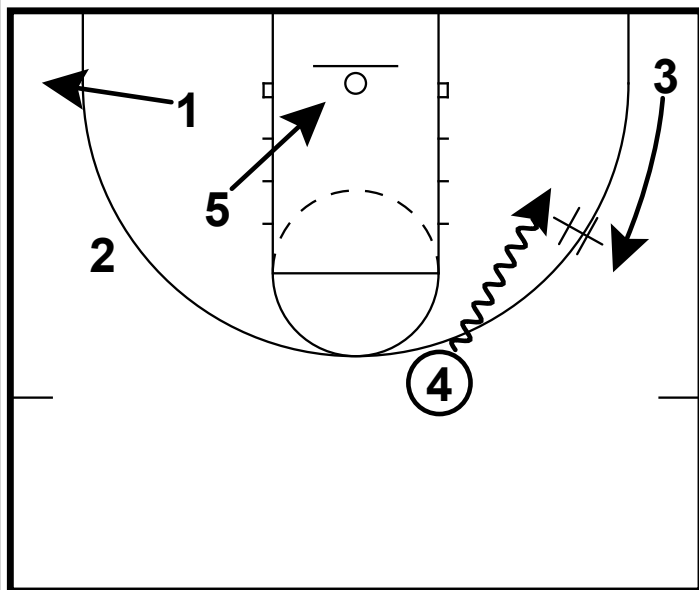


Once the ball is entered to the post, the PG sets the first in a stagger screen situation.

The purpose for this is to prevent an easy switch from x1 to x2.

If 2 sets up the cut well enough, this could lead to a nice curl cut in the lane.

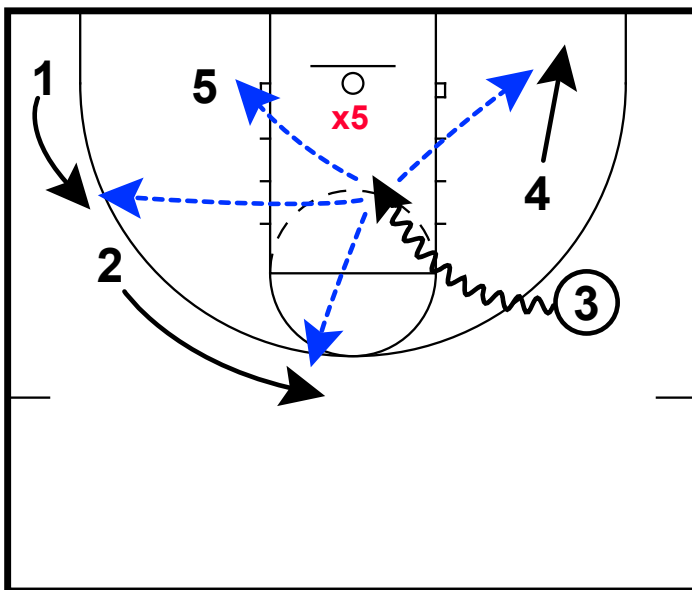
HALF-COURT: HORNS DOUBLE



If the ball cannot be reversed to the other side, we then taught a handoff principle on the strong side.

On the opposite side, we wanted spacing. One person occupying the opposite block and 2 players filling the perimeter spots.

HALF-COURT: HORNS DOUBLE



With 3 with the ball, he/she is free to attack downhill into the lane.

If x5 helps up, this is nice dump off opportunity. 4 is also available on the step out jumper if x4 hedges hard on this handoff.

1 & 2 are spacing well beyond the arc for potential spot up jumpers.