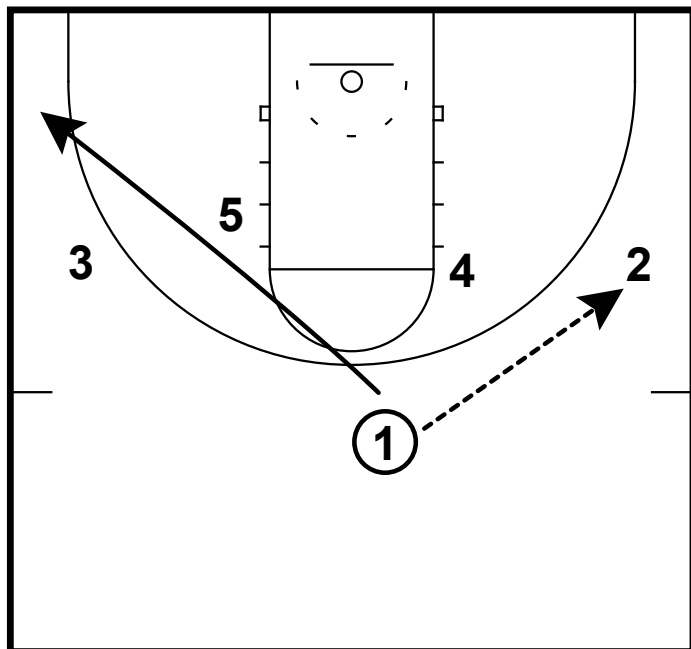
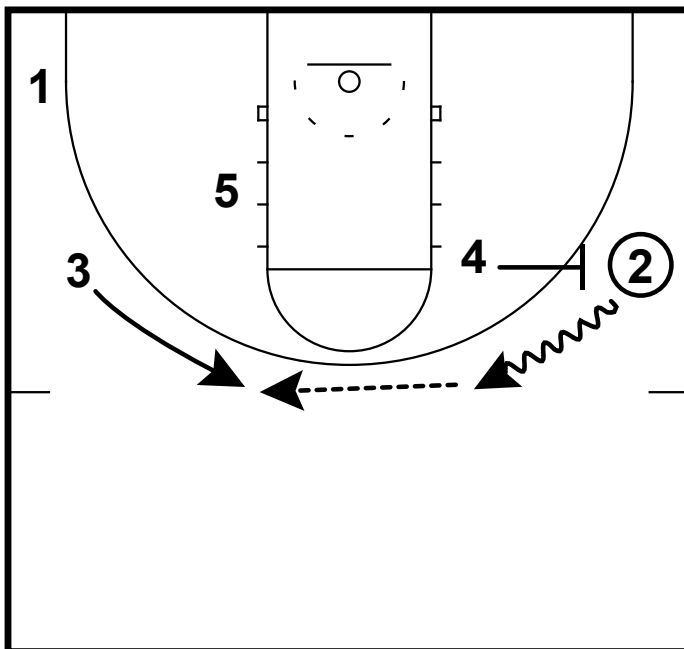


HALF COURT: ROCHESTER PEEL



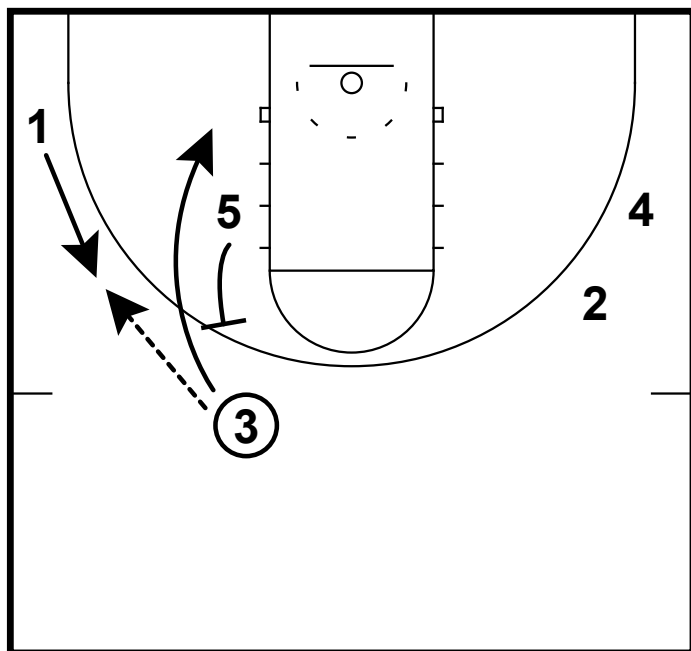
Here is a set from the Rochester men's team. They are aligned in a 1-4 high set with the 5 a step below the elbow. 1 hits 2 and cuts opposite corner

HALF COURT: ROCHESTER PEEL



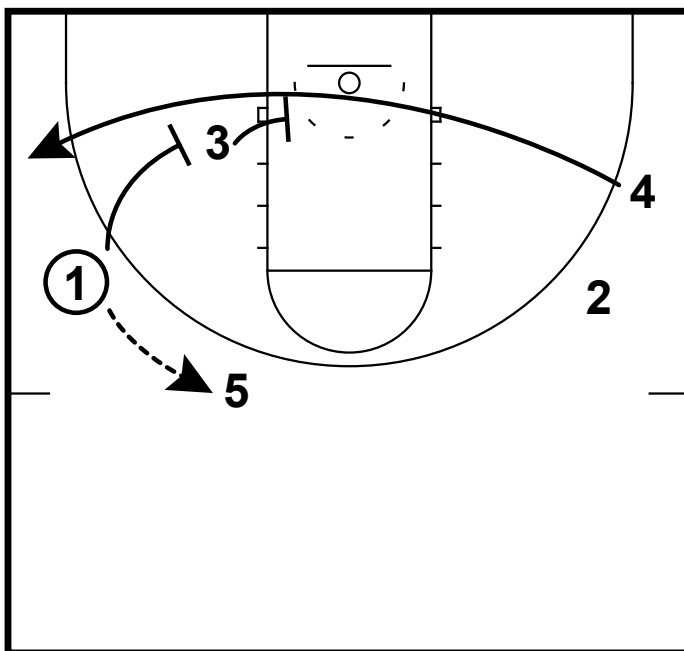
4 will ball screen for the 2. 3 rotates high and gets a pass from the 2.

HALF COURT: ROCHESTER PEEL



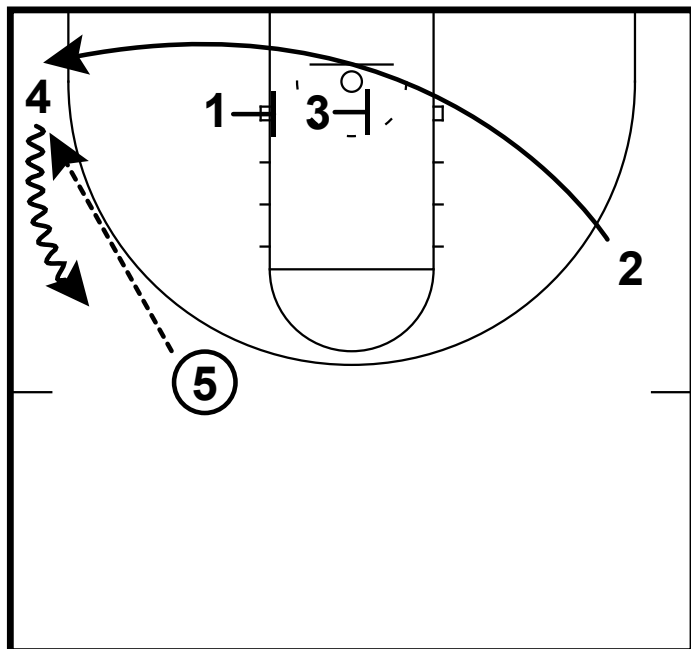
3 reverses to the 1 and gets a UCLA screen from the 5.

HALF COURT: ROCHESTER PEEL



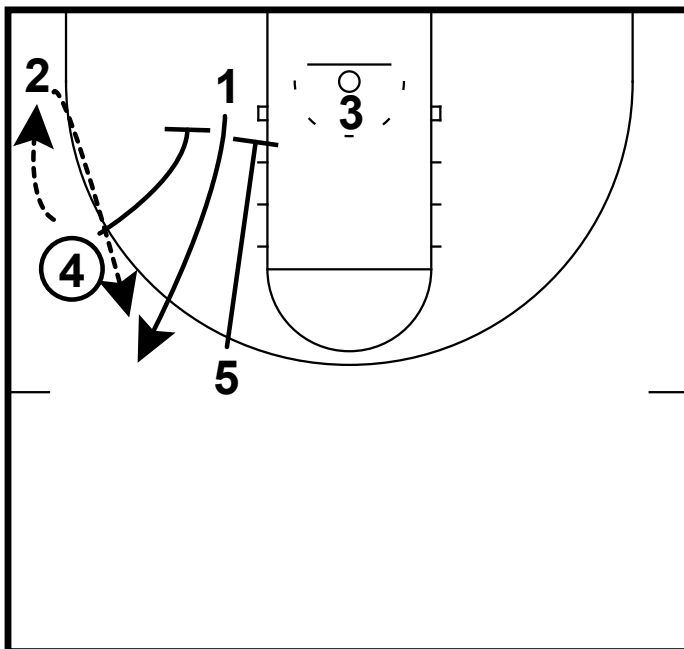
After 5 screens he pops high and gets a pass from the 1. 1 and 3 will set a double screen for the 4.

HALF COURT: ROCHESTER PEEL



4 will dribble up the arc while 1 and 3 set a double for the 2

HALF COURT: ROCHESTER PEEL



4 will pass to the 2 and then 4 and 5 set an elevator screen for the 1.