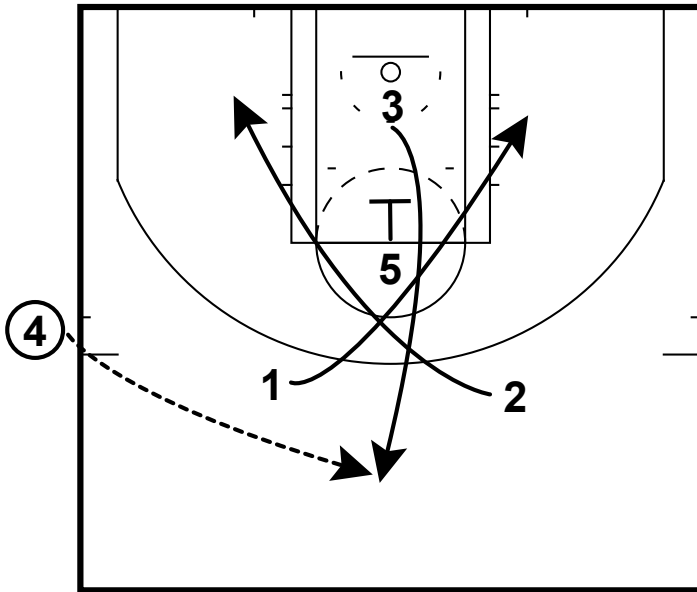
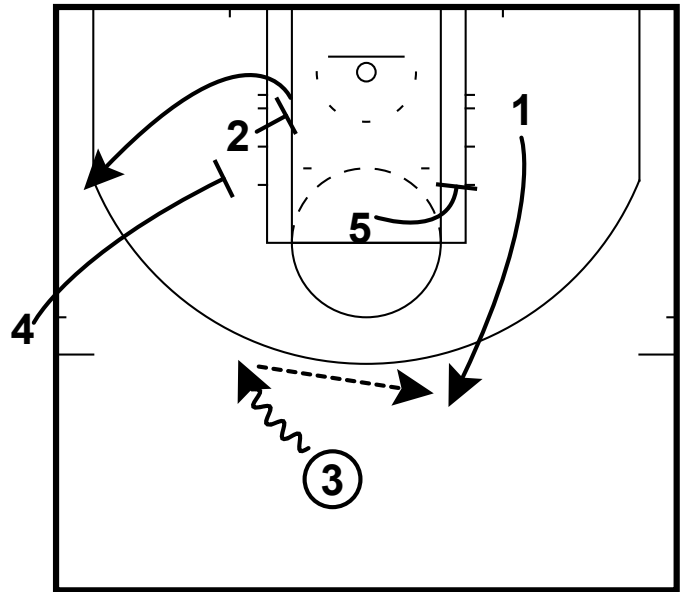


SOB: SPURS PIN



This comes from the Spurs and what they like to run in late second SOB situations. 1 and 2 will cut off the 5. The 5 then screens for the 3. The 4 will pass to the 3.

SOB: SPURS PIN



1 will refuse the double from the 4 and 2. Then will get a screen from the 5. 2 will then cut off 4's screen. 3 dribbles over and will hit the 1 for the shot.