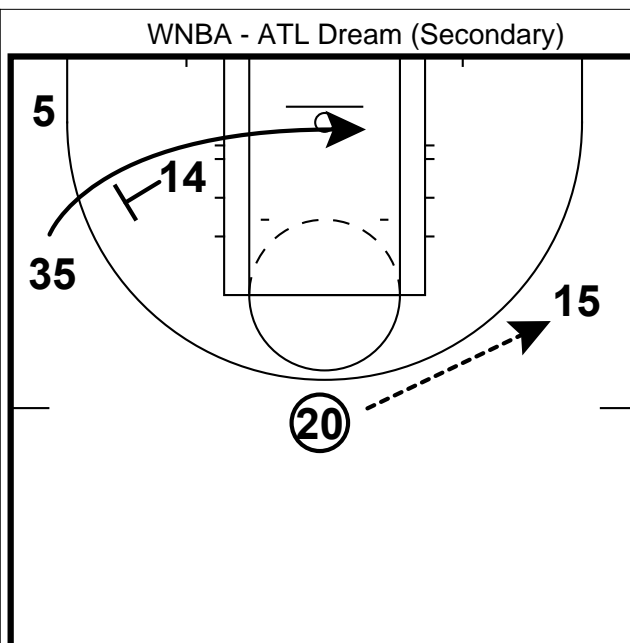
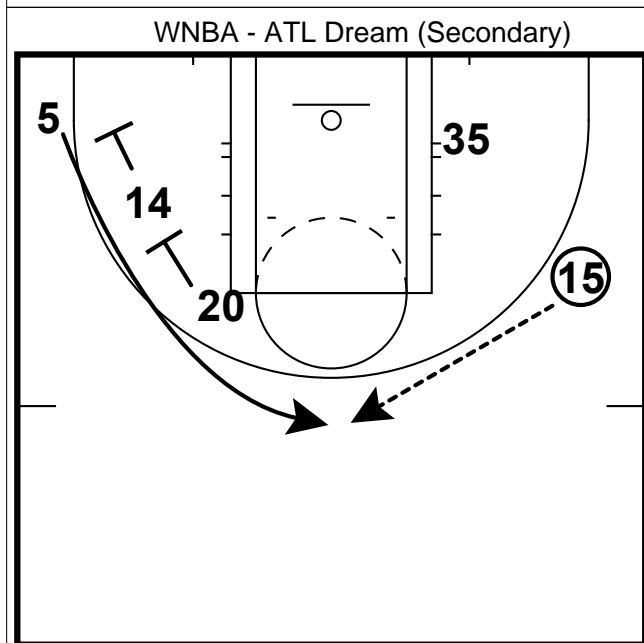


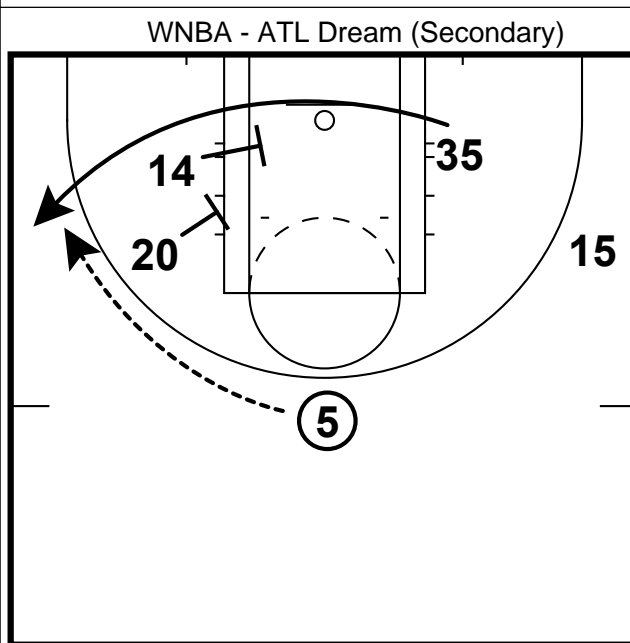
Here is a common secondary break that the Dream ran early in their season. They start with a pitch ahead & a corner cut.



Once the ball is reversed they will get a back screen with the post player & usually for Angel McCoughtry.



Now they will turn with both post players for the PG in the corner.



Now the 2 post players will turn right around and set a double screen for McCoughtry coming back to the corner.