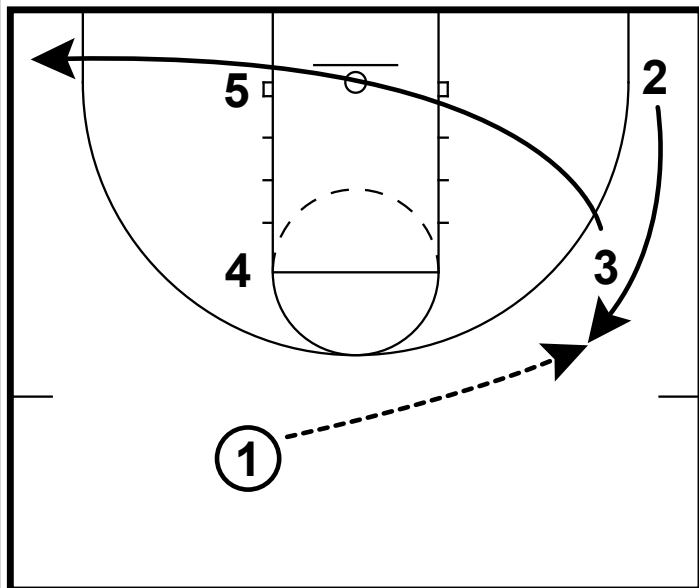
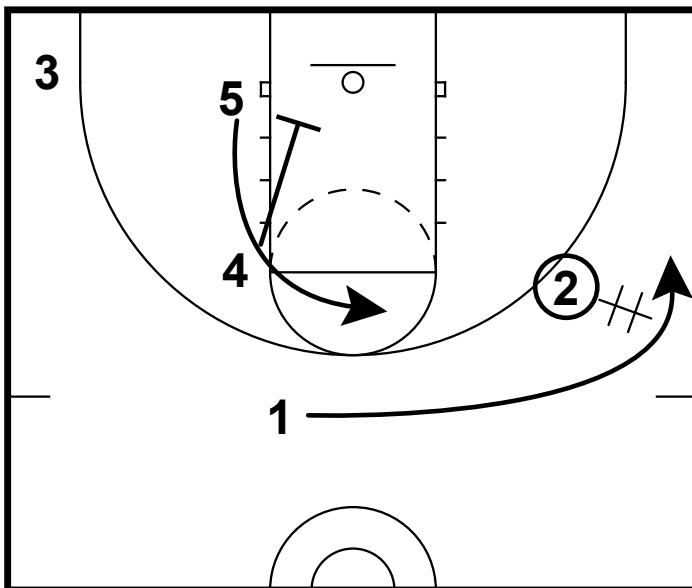


HALF COURT: HANDOFF BALL SCREEN



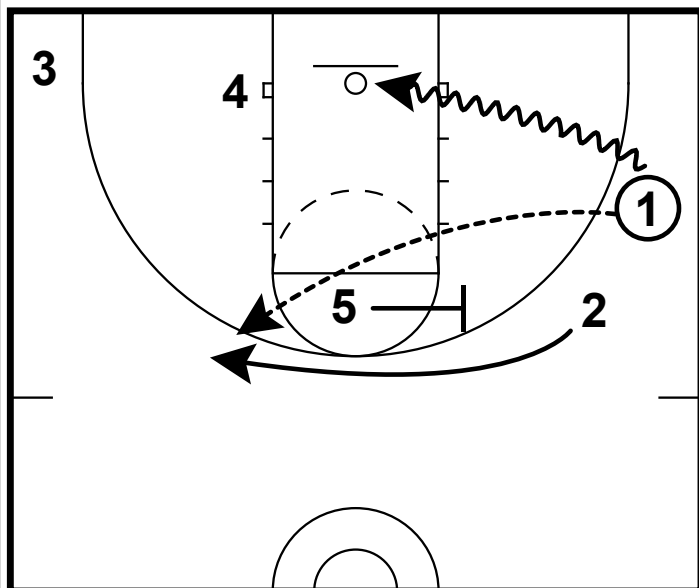
- 1) This off-set action starts with both bigs on one side of the court and your two wings on the other side of the court.
- 2) Having an odd looking play like this can sometimes catch the defense off guard.
- 3) Start your wing with a hard "through" cut and have the wing right behind fill to the wing. Cutting hard to the basketball is important here.

HALF COURT: HANDOFF BALL SCREEN



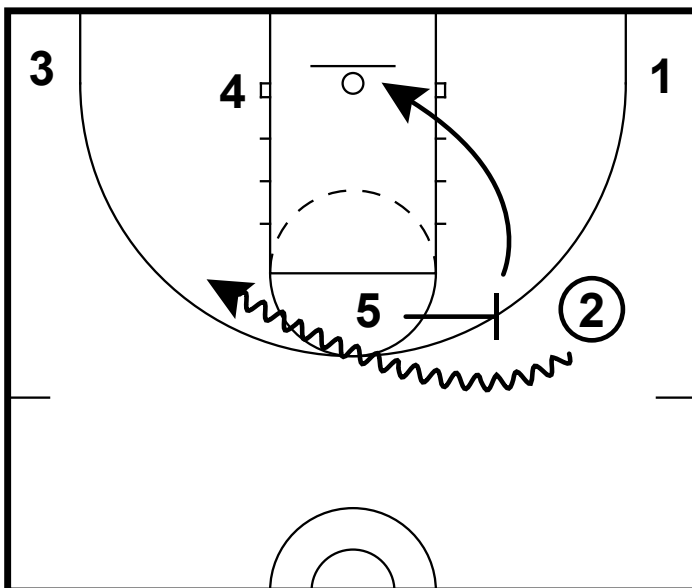
- 1) In this frame we have an option. The first option is get an immediate hand-off for the point guard. With one side cleared, this is a great chance for a quick downhill attack.
- 2) Away from the ball, 4 should screen for 5. Also be aware of a switch & slip situation here - 4 could come open at the mouth of the rim.

HALF COURT: HANDOFF BALL SCREEN



- 1) If the handoff does occur the point guard now has an option to get downhill and score quickly.
- 2) 5 will also set a flare screen for 2. This would be a good option for a shooter in this spot.

HALF COURT: HANDOFF BALL SCREEN



- 1) If the handoff does not occur, 5 will set a ball screen and 5 immediately rolls to the bucket.