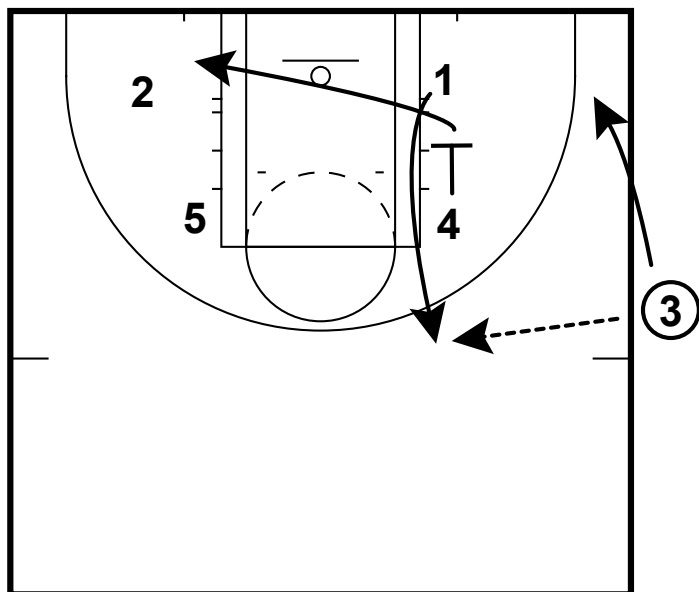
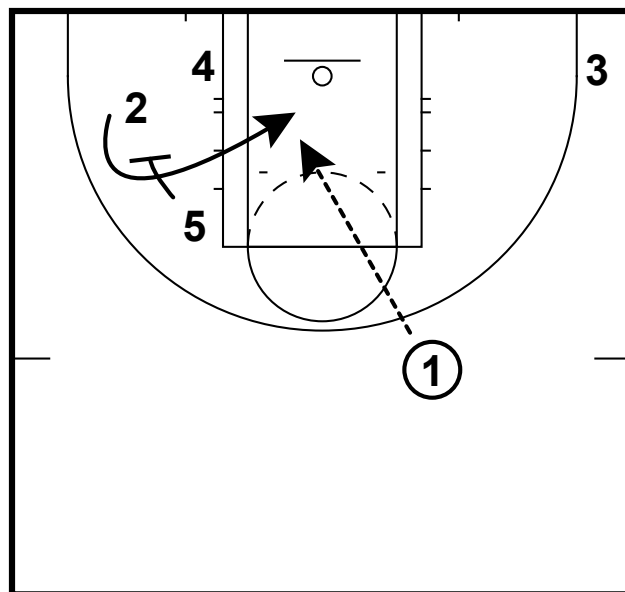


SOB: SEATTLE STORM



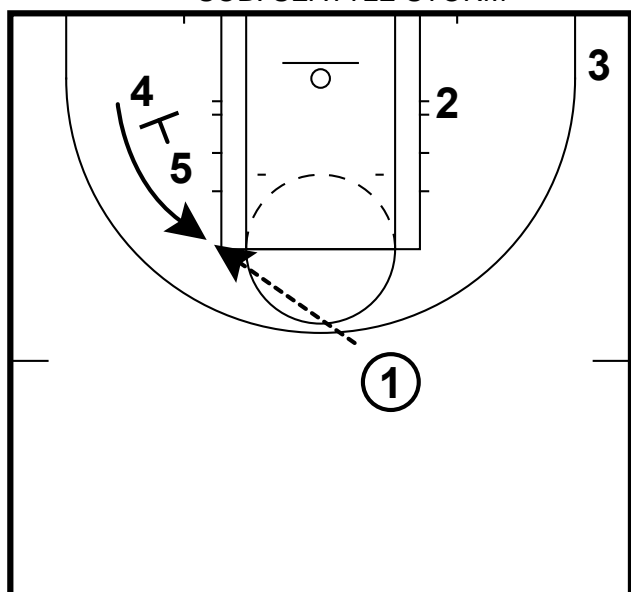
Here is a SOB from the Seattle Storm. They start in a box set with the 2 spaced out just off the block. 4 screens for the 1. The 4 then clears through. 3 spaces out to the corner.

SOB: SEATTLE STORM



5 will then screen for the 2 who curls tight off the screen. If open the 1 will pass the ball for a layup.

SOB: SEATTLE STORM



If the 2 is not open then the 5 will screen for the 4 who makes a straight cut. 1 will pass to the 4 for the shot.