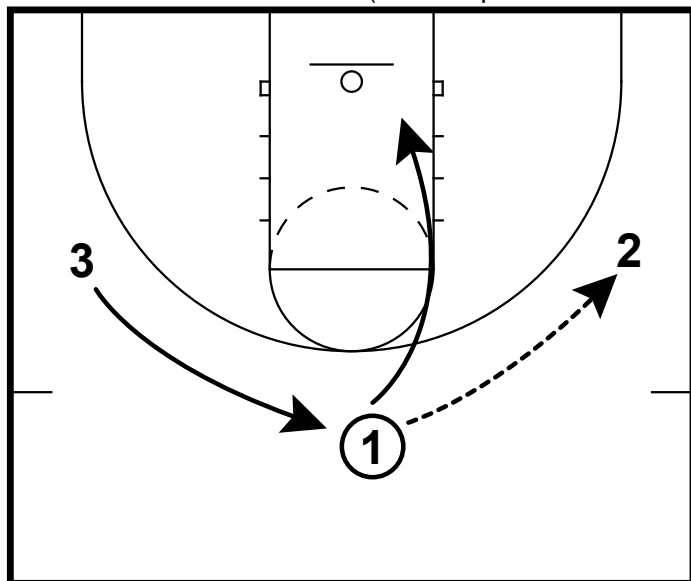
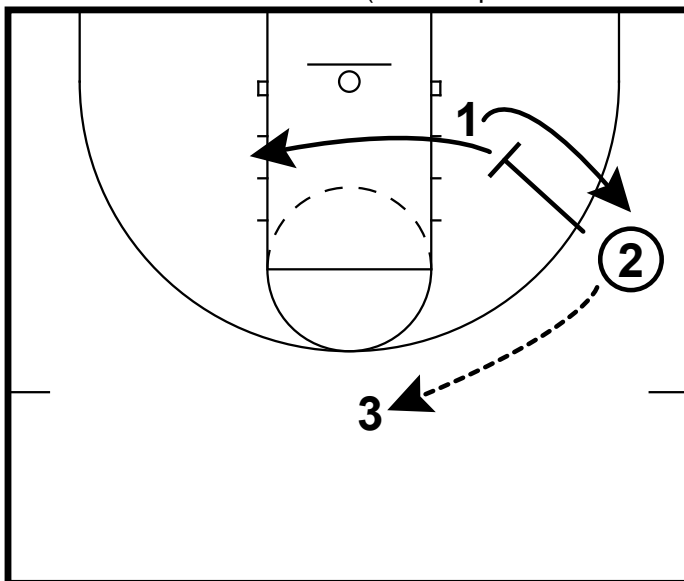


3 Out Motion Series(Cut into pindown)



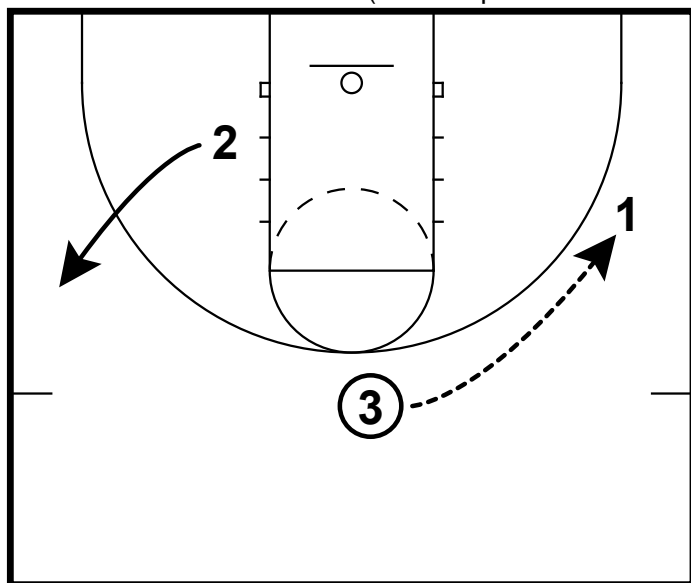
The second portion of our 3 out motion series we will add a pin down screen. 1 passes to the 2 and basket cuts. 3 replaces up top.

3 Out Motion Series(Cut into pindown)



2 will pass the ball back up top to the 3. The 2 will now set a pin down screen for the 1.

3 Out Motion Series(Cut into pindown)



2 fills the left wing. 3 will pass to 1 who is looking for his shot coming off the screen.