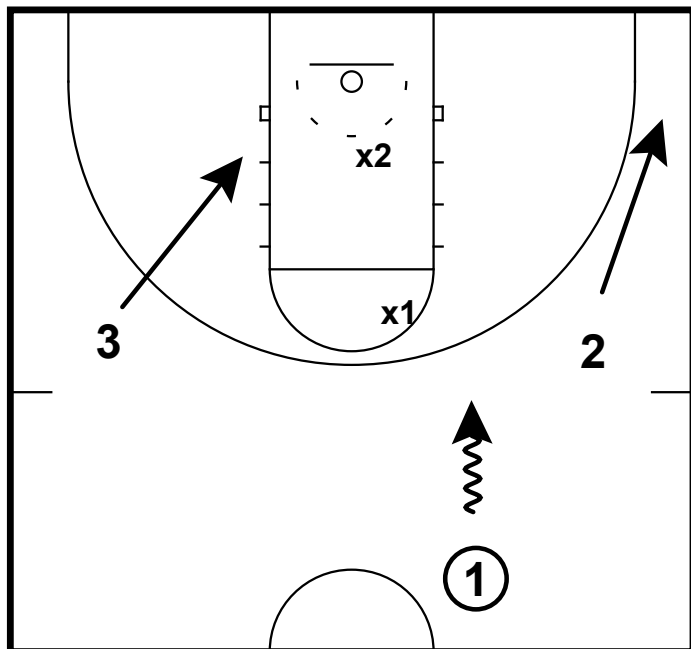
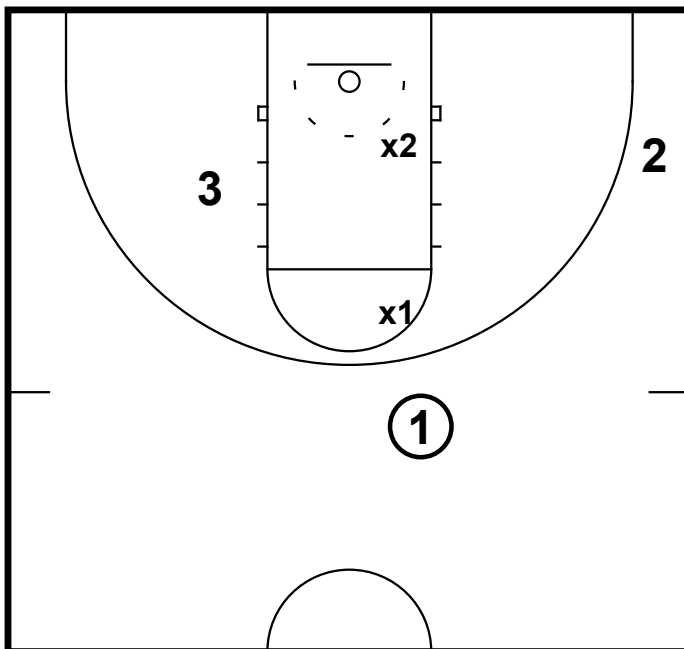


3 on 2 BREAK



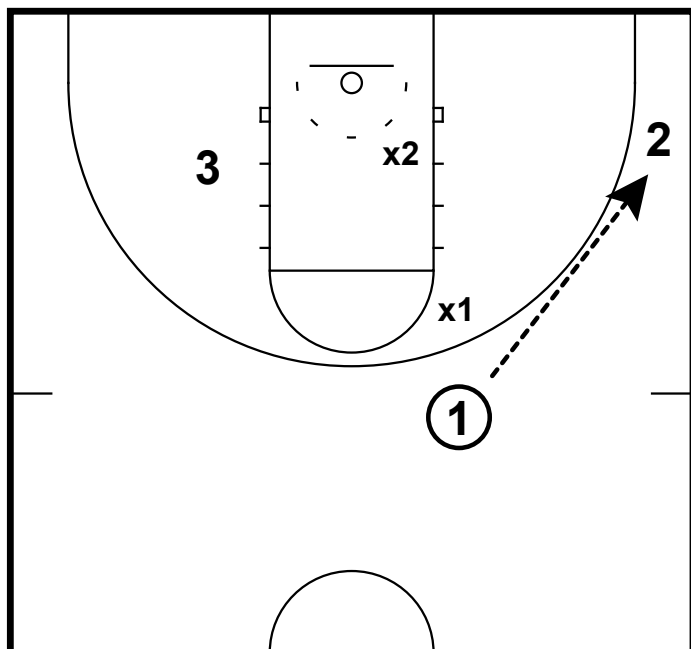
The ball handler needs to identify who is shooter is and who is slasher is. In this case we will say the shooter is the 2 man. 1 will bring the ball down along the right lane line. This pushes the 2 to the corner. The 3 will cut towards the rim.

3 on 2 BREAK



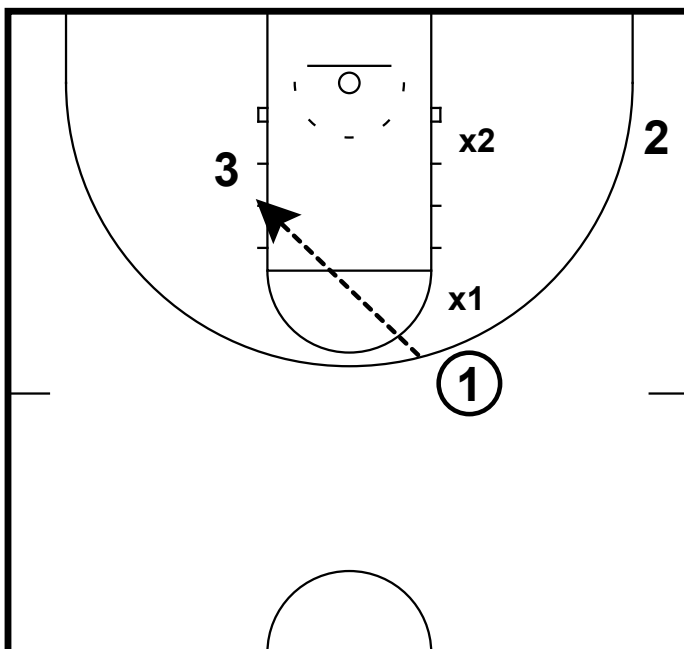
We have now shifted the defense and put x2 in a vulnerable spot. He must make a decision on who he is going to guard.

3 on 2 BREAK



If x2 takes away the slasher then the 1 will hit the 2 for an open 3.

3 on 2 BREAK



If x2 shades toward the shooter then 1 will hit the 3 for the easy basket.