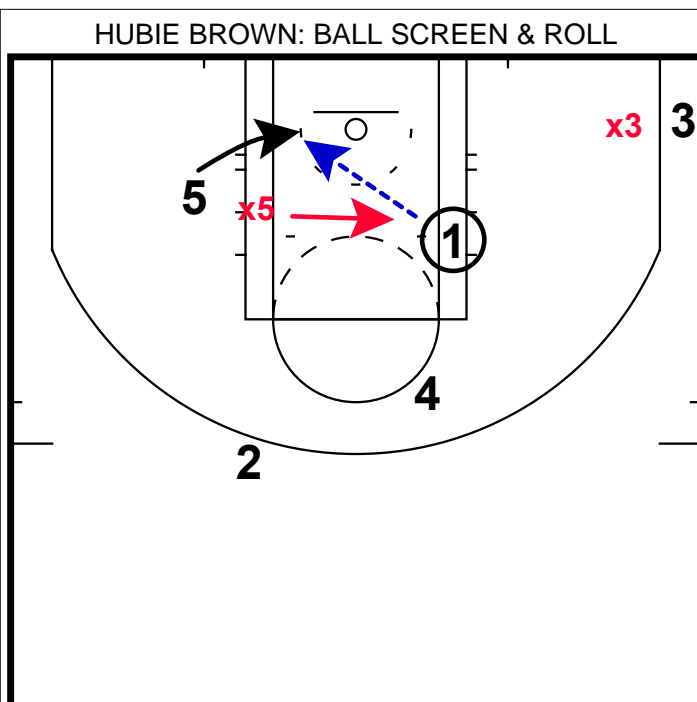
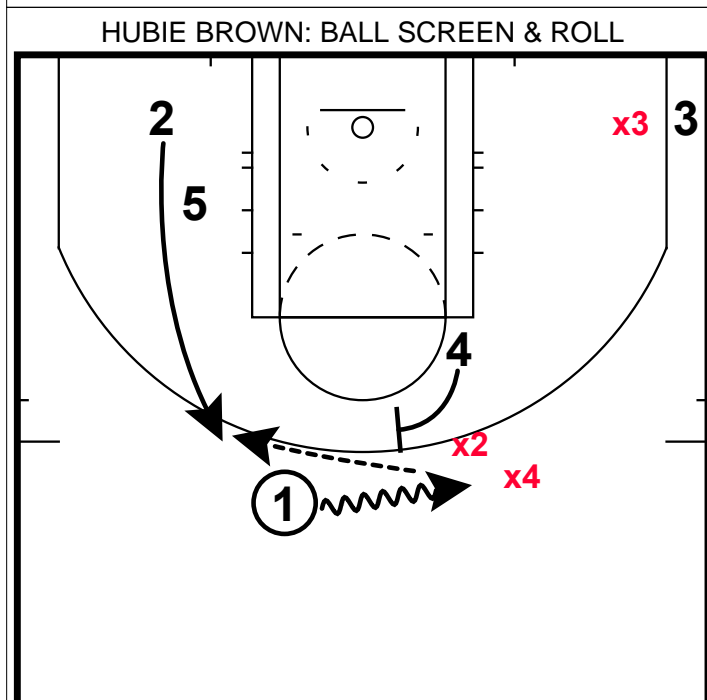


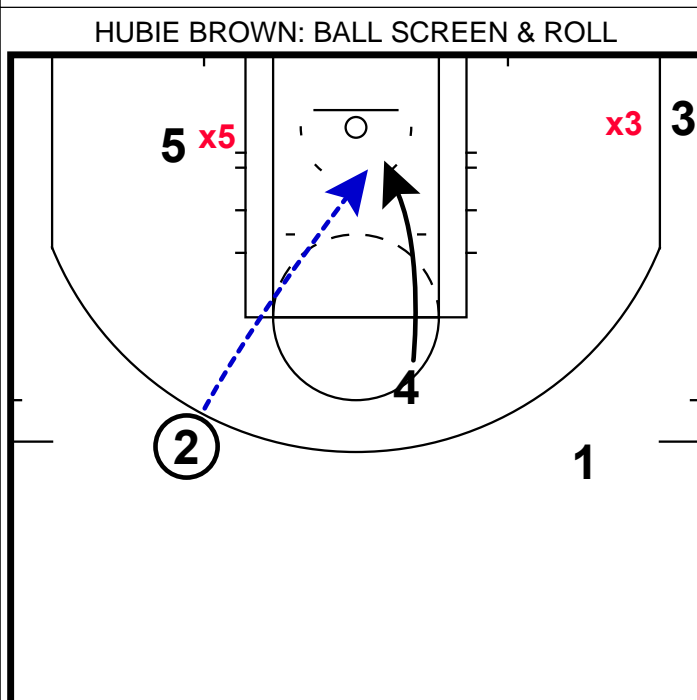
- 1) Here is a PnR set from Hubie Brown.
- 2) The PG in this frame will rub off of the high ball screen and get down hill.
- 3) It is important to put the best shooter in the corner so that x3 will lock into him in the corner.



- 1) With 2 cleared to the top of the key, 1 gets into the lane and x5 will be forced to help over.
- 2) This will open up an open look for 5 on the back side.
- 3) This effectively creates a 2 on 1 situation.



- 1) In this frame we see what happens if the PG gets trapped off of the ball screen.
- 2) This is where 2 can provide an outlet for the trap.



- 1) 4 will slip hard to the rim. This puts x5 at a decision. He cannot guard both 5 & the slipping 4.
- 2) If x3 decides to help on the slip, the skip pass to 3 will be open.