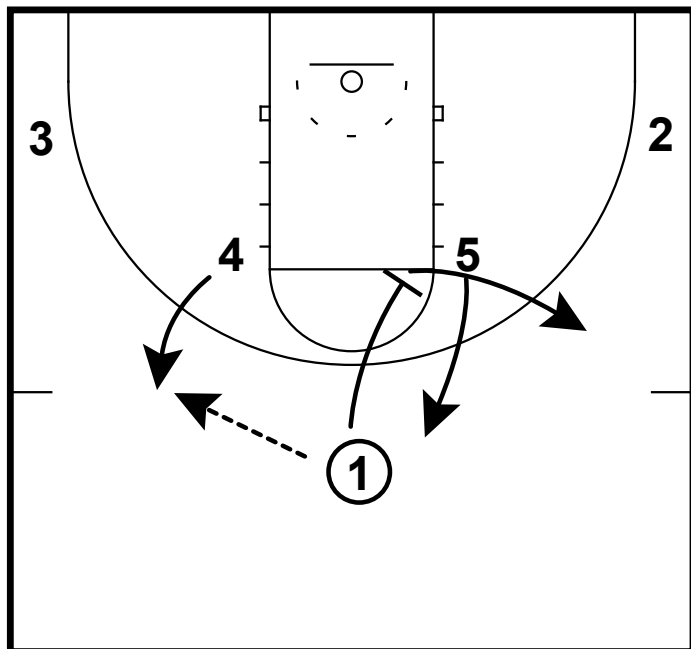
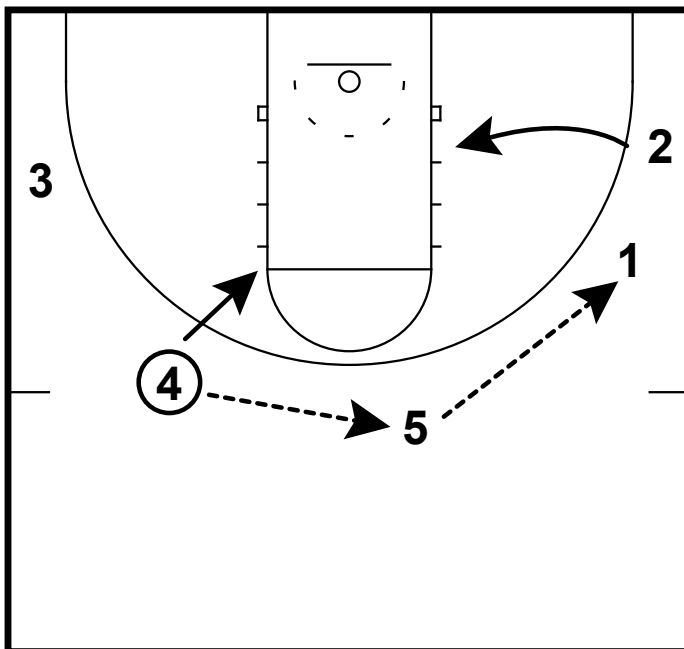


HALF-COURT: LEE HORNS



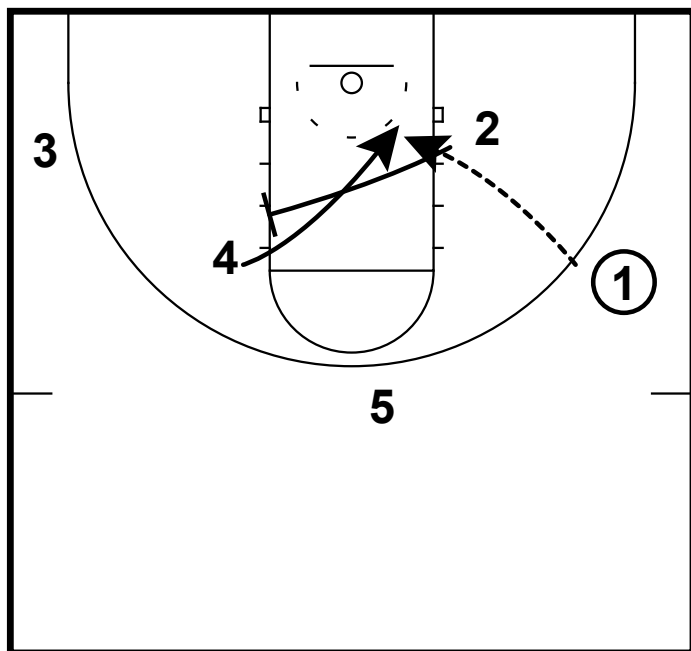
Here is a HORNS look from the Lee University Women's team. In this look the 2 and 3 are not completely in the corner. The 4 pops out and gets a pass from the 1. 1 goes and screens for the 5.

HALF-COURT: LEE HORNS



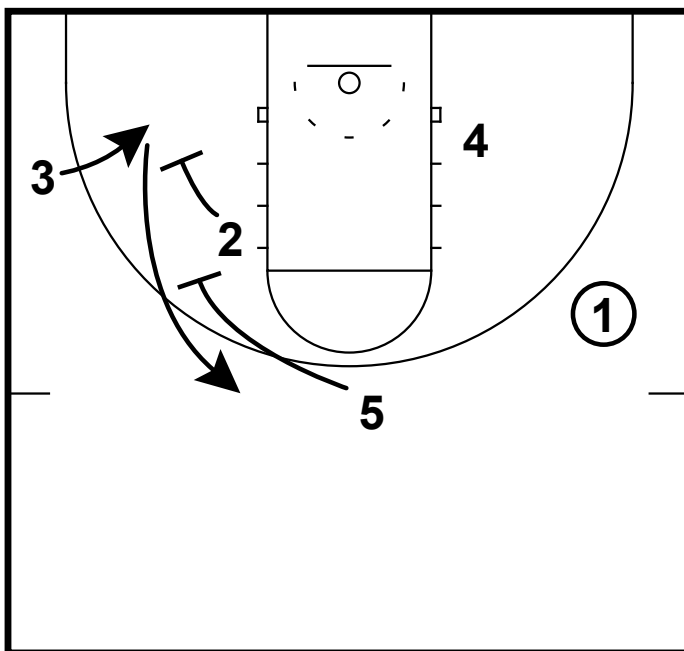
2 cuts toward the first lane mark. 4 passes to the 5. 5 passes to the 1. 4 cuts to the left elbow.

HALF-COURT: LEE HORNS



2 sets a back screen for the 4. 2 passes to the 4 if open.

HALF-COURT: LEE HORNS



If the 4 is not open then the 2 and 5 will set a double screen for the 3.