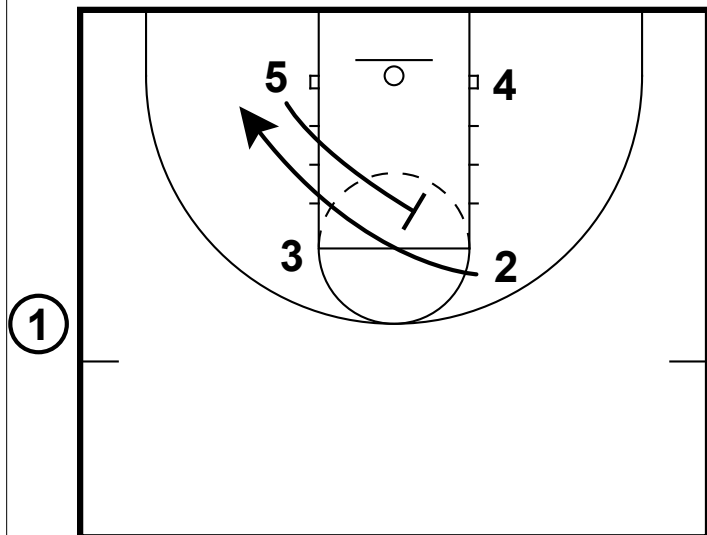
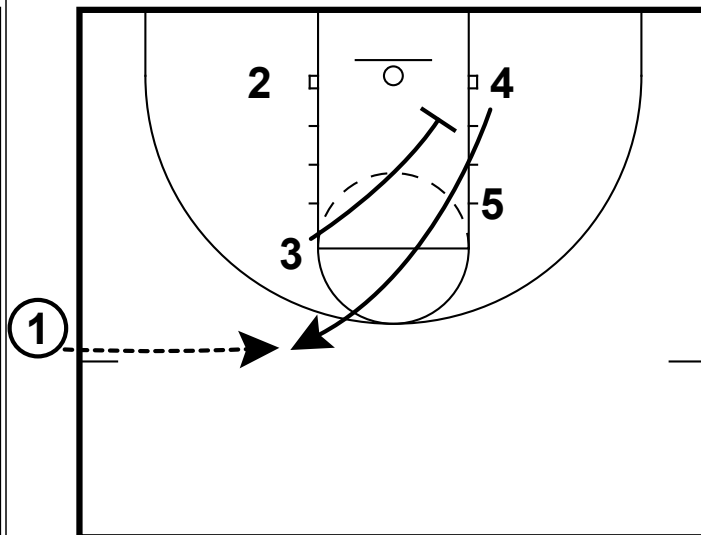


SOB: X OUT DOUBLE



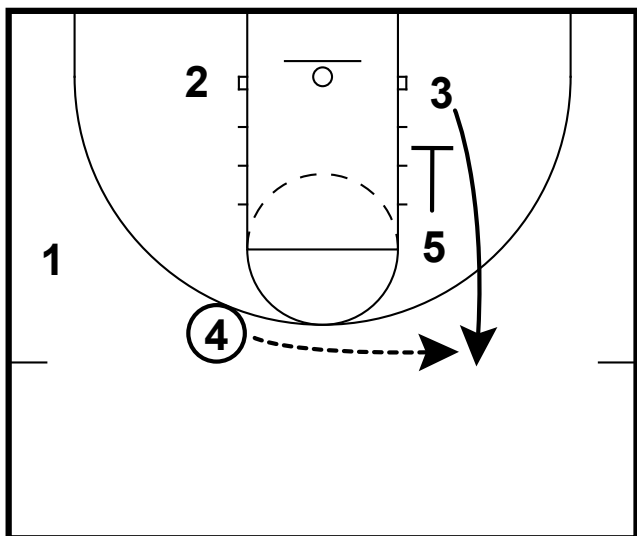
- 1) Lining up in the box set, it is important to put the right people in the right spot.
- 2) Having a point guard take the ball out could be important for passing/decision making purposes.
- 3) Putting the posts at the bottom and the guards at the top is opposite of what normally happens in this situation. Setting this diagonal cross screen for the guard is really a distraction for what is to come.

SOB: X OUT DOUBLE



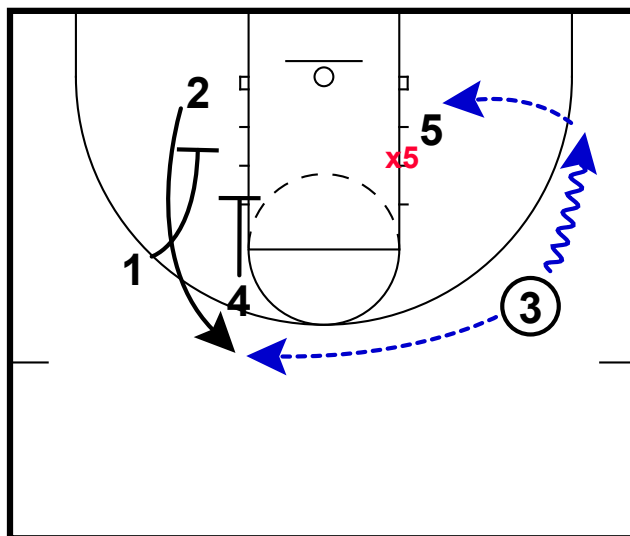
- 1) A second diagonal screen is set here for the 4 player.
- 2) Perhaps putting a player here where switching would create a mismatch could be optimal.

SOB: X OUT DOUBLE



- 1) With the ball inbounded to 4, an immediate down screen will be set for 3.
- 2) Always be aware of a screen and slip opportunity here - especially with no back side help in the picture.

SOB: X OUT DOUBLE



- 1) Now there are two actions that can be looked at here. 2 comes off of the double screen and could be open for a shot.
- 2) Or looking for a post feed to your best post player is also a good look. Especially with the defense being occupied on the back side with the screen action.