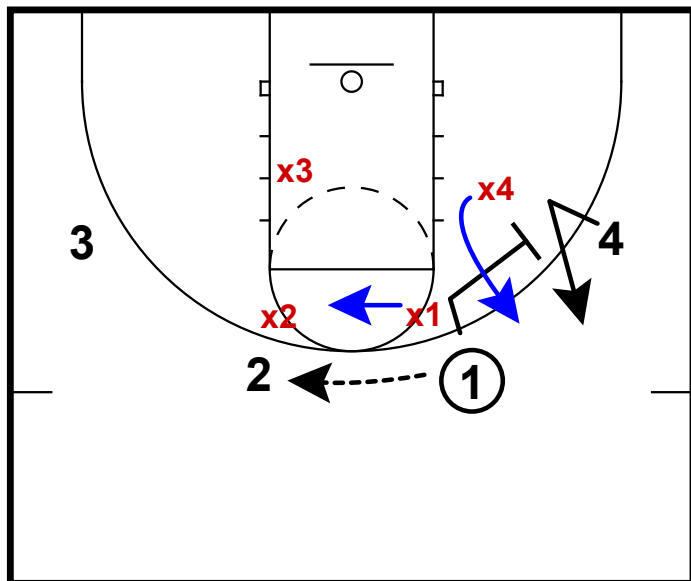


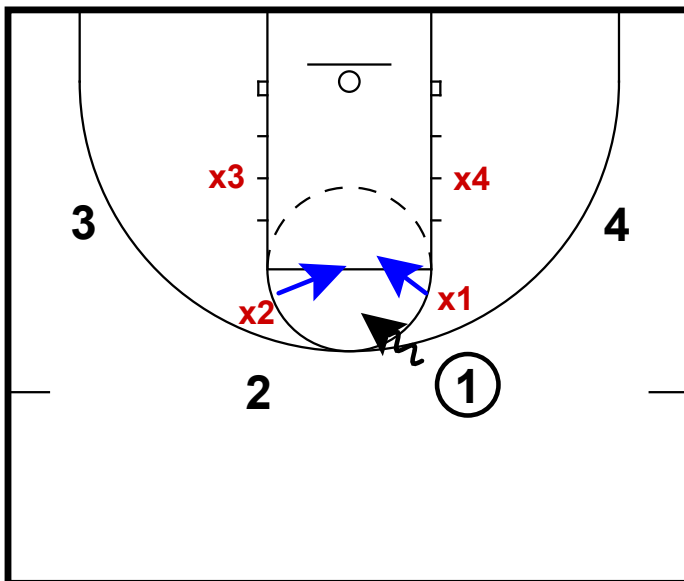
4 on 4 SHELL: WHAT TO DEFEND



SCREENING AWAY

1. X1 jumps to the ball. Creates a gap for X4
2. X4 slides through the gap.

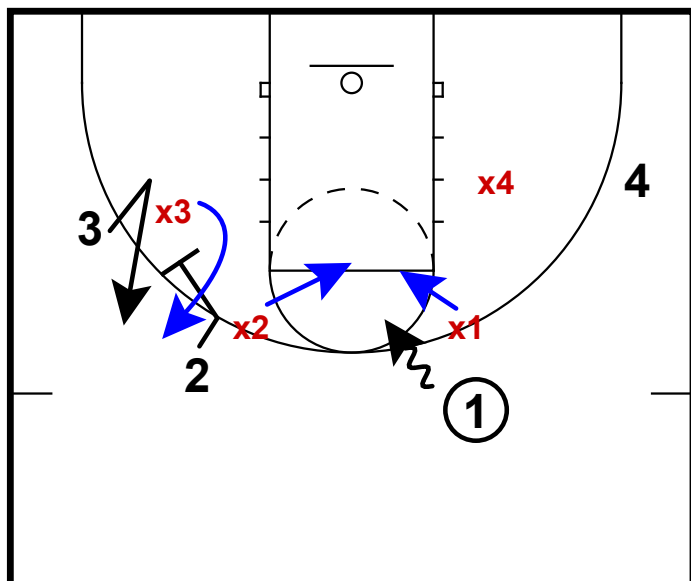
4 on 4 SHELL: WHAT TO DEFEND



DRIBBLE PENETRATION

1. X2 provides quick help if X1 gets beat off the dribble.

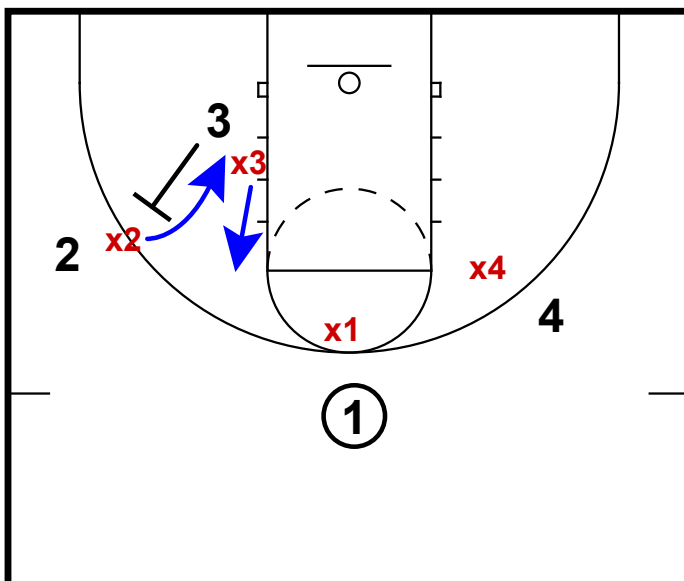
4 on 4 SHELL: WHAT TO DEFEND



DRIBBLE PENETRATION WITH SCREENING

1. X2 gives quick help.
2. X3 goes through gap created by X2.

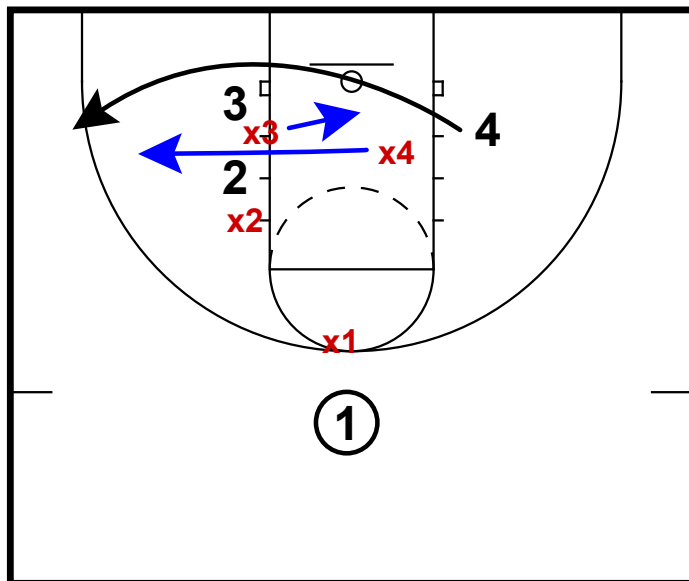
4 on 4 SHELL: WHAT TO DEFEND



BACK SCREEN

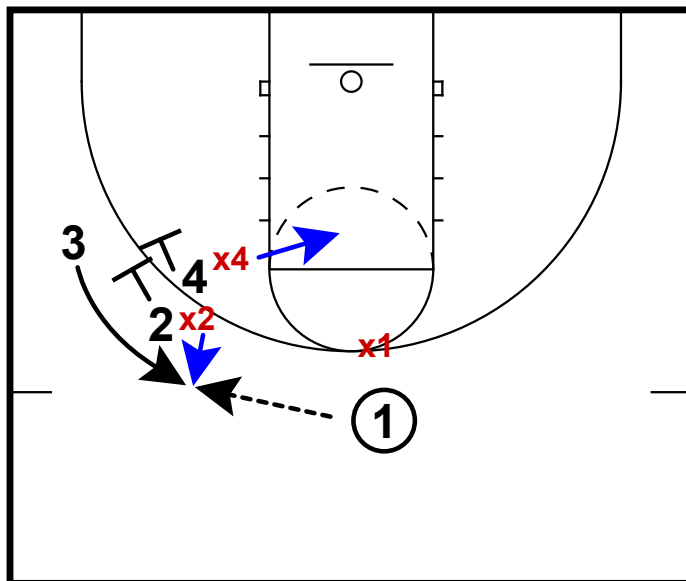
1. X3 creates gap.
2. X2 slides through gap.
3. Can also switch if it is a guard on guard/post on post screen.

4 on 4 SHELL: WHAT TO DEFEND



- DOUBLE SCREEN ON BASELINE**
- 1.X3 zones up to take away the slip.
 - 2.X4 goes through gap that X3 created.
 - 3.X4 could also chase his defender.

4 on 4 SHELL: WHAT TO DEFEND



- DOUBLE SCREEN ON WING**
- 1.X4 zones up to take away slip.
 - 2.X2 hedges on top screen to prevent or deflect pass.