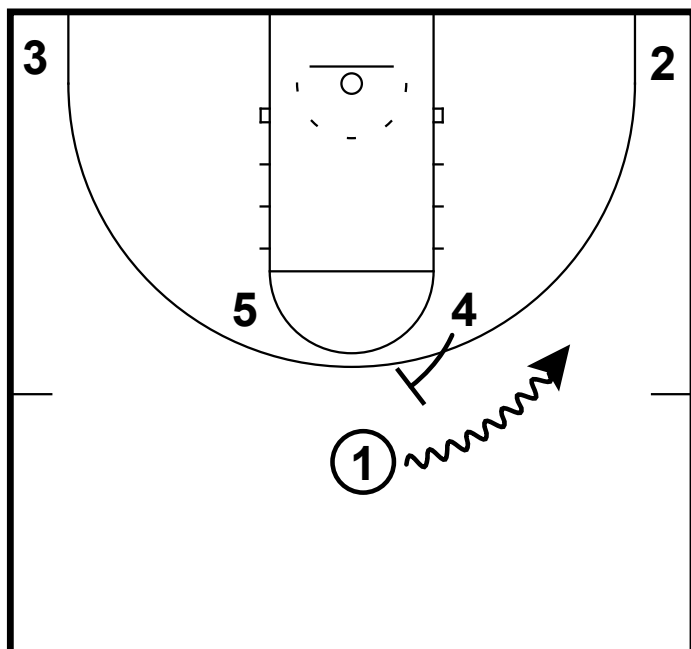
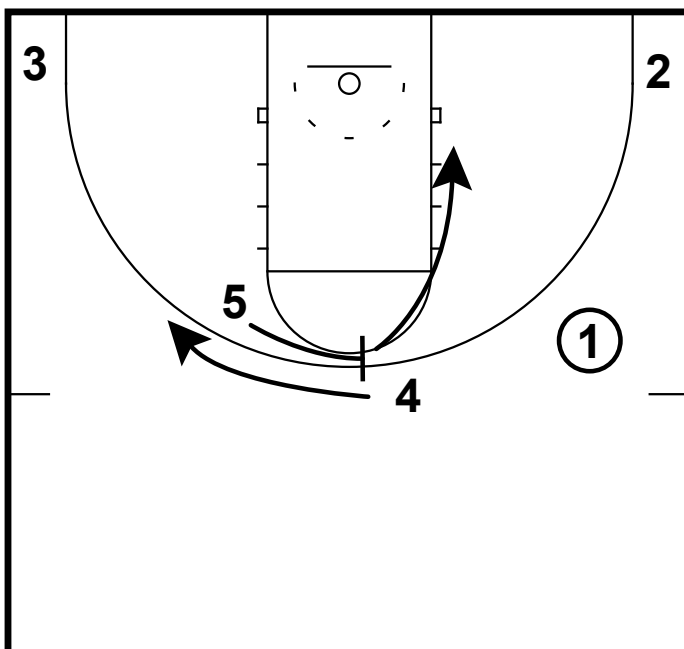


2015 HS ELITE 100: #8 HENRY ELLENSON



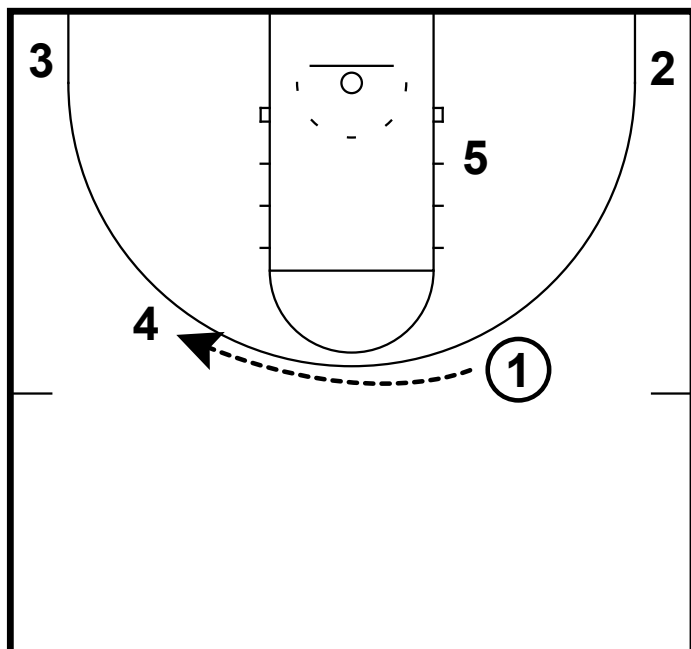
This horns/flare action fits the skill set Henry Ellenson very well. This is designed to get a big with guard skills the ball to make a play or get a shot off. In this set (Ellenson) will be the 4 man.
4 ball screens for 1.

2015 HS ELITE 100: #8 HENRY ELLENSON



5 sets flare for 4.
5 cuts to rim after screen.

2015 HS ELITE 100: #8 HENRY ELLENSON



1 passes to 4 for open shot.
If 4 is not open he looks to drive the ball.