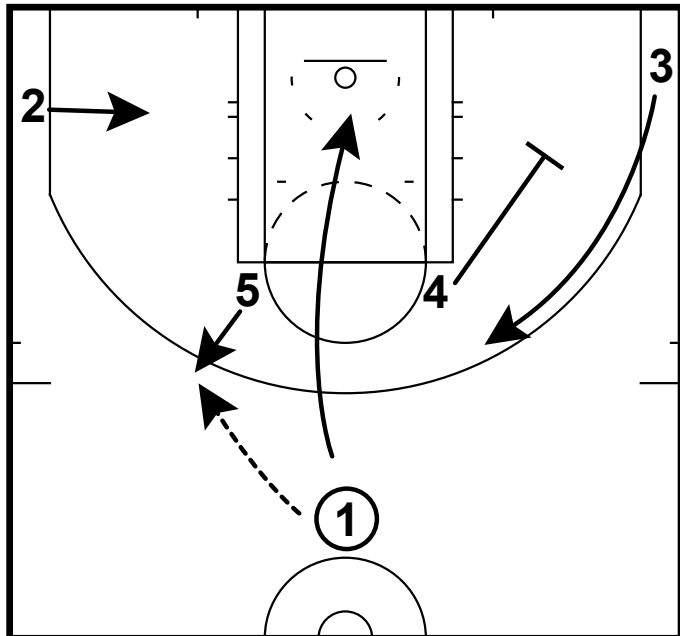
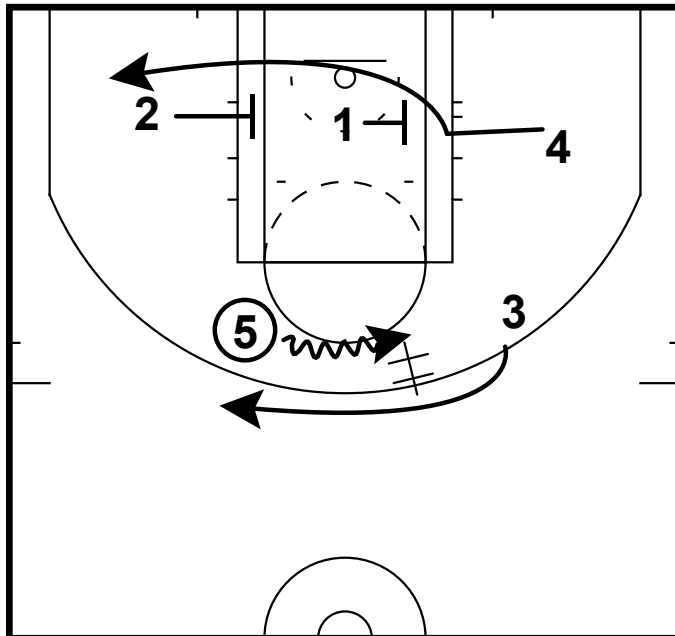


2015 HS ELITE 100: #3 TE'A COOPER



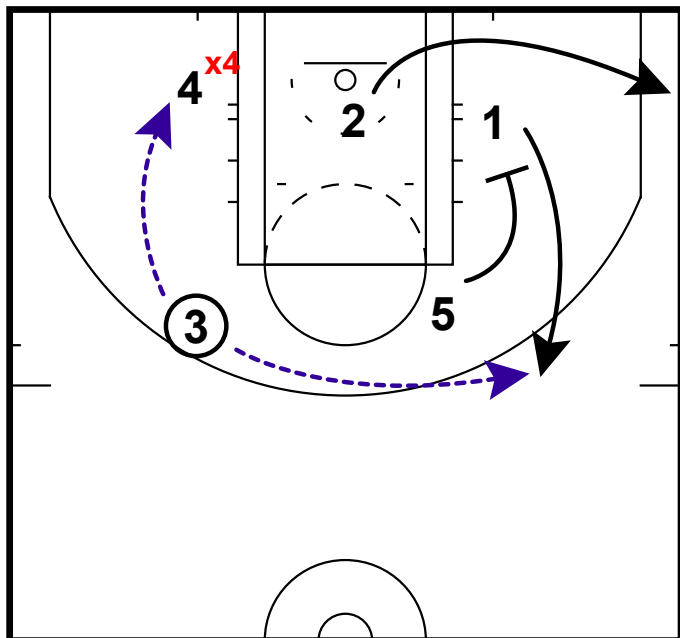
2015 HS ELITE 100: #3 TE'A COOPER



In this set Ta'e Cooper would be the 1. This is great action that can get a scoring PG a good look.  
 1) Many pro teams love to use the Horns set these days. The Bulls are no different. Bringing your post players out opens the lane up, but also forces the post defenders to move as well.  
 2) In this set the PG makes a pass to the post player and makes an immediate basket cut.  
 3) The opposite post player sets a down screen away from the ball and the opposite wing makes a straight cut towards the ball.

1) 5 now executes a dribble handoff for 3 at the top of the key.  
 2) Along the baseline, 4 receives a double baseline screen from the point guard and the wing. This is effective because it prevents a switch, because it would create a mismatch for the Bulls post scorer on the block.

2015 HS ELITE 100: #3 TE'A COOPER



1) Now the Bulls have exactly what they want - 2 options where they will have a scoring opportunity.  
 2) They can feed the post on the block or they can look opposite for the PG coming off of a down screen from 5. This screen the screener action creates confusion for the defense.  
 3) Notice how 2 spaces to the arc, which could create an extra pass opportunity. Or - this opens up a quick slip for 5 at the rim.