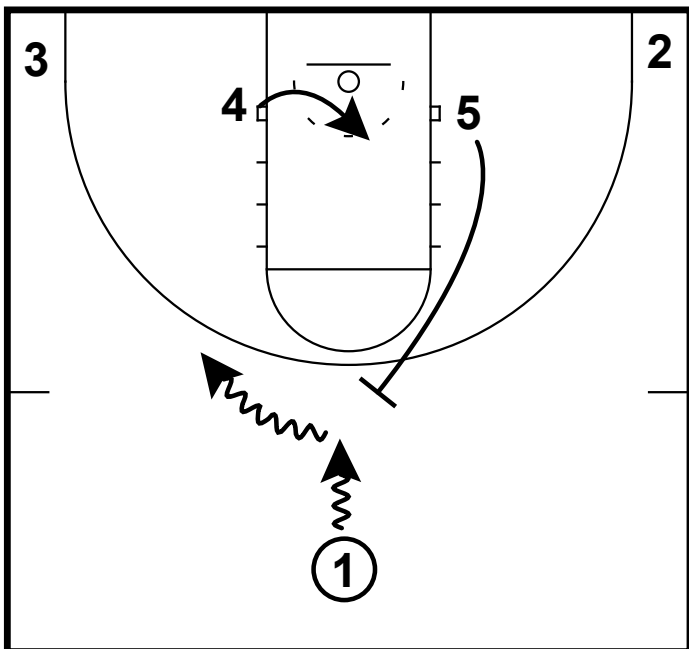
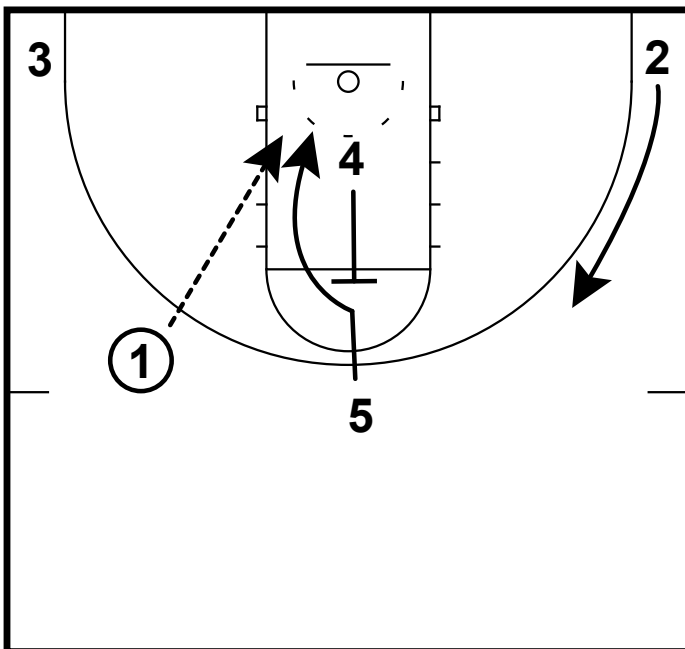


2015 HS GIRLS ELITE 100: #6 NAPHEESA COLLIER



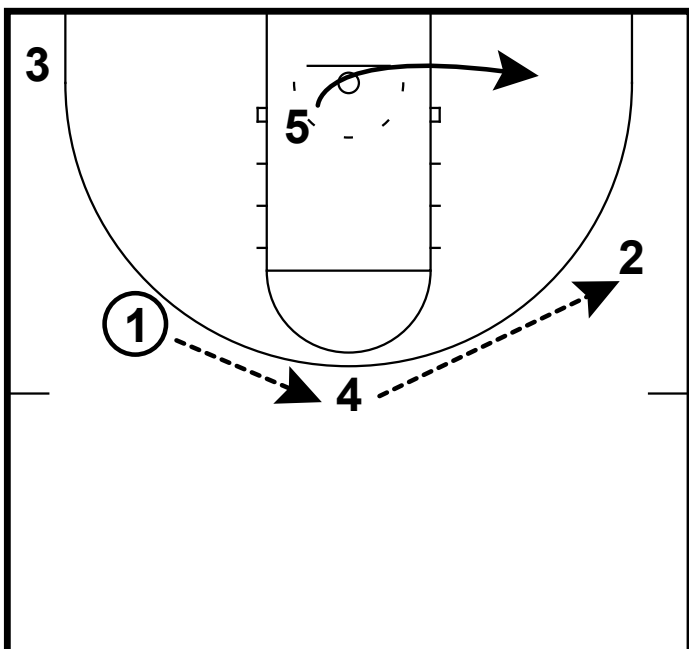
Here is a high ball screen set from Purdue. They start off in a 1-4 low alignment. 5 will sprint up top to set a ball screen for the 1. The 1 will dribble his man down but will refuse the ball screen. 4 moves to the middle of the paint.

2015 HS GIRLS ELITE 100: #6 NAPHEESA COLLIER



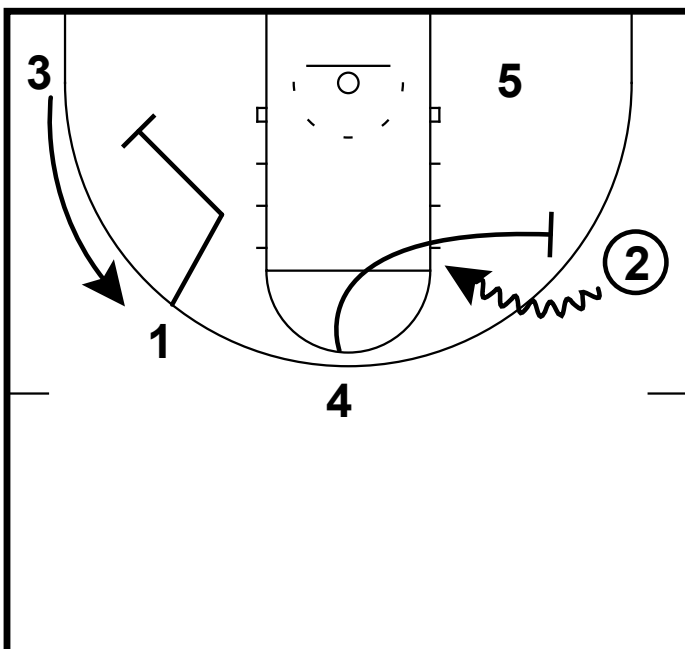
As the 1 dribbles the arc. 5 will run his man right into 4's back screen. 1 will pass to 4 if he is open. 2 rotates high to take away the help. 4 will second cut up top.

2015 HS GIRLS ELITE 100: #6 NAPHEESA COLLIER



If the 5 does not get the ball he will clear out to the right short corner. Now the ball will be reversed around the perimeter to the 2 man.

2015 HS GIRLS ELITE 100: #6 NAPHEESA COLLIER



When 2 catches the ball. 1 will go screen away for the 1. The 4 will go ball screen for the 2. 2 is looking to attack off the screen. Another option off of this is the 1 and 4 can go set a double stagger screen for the 3.