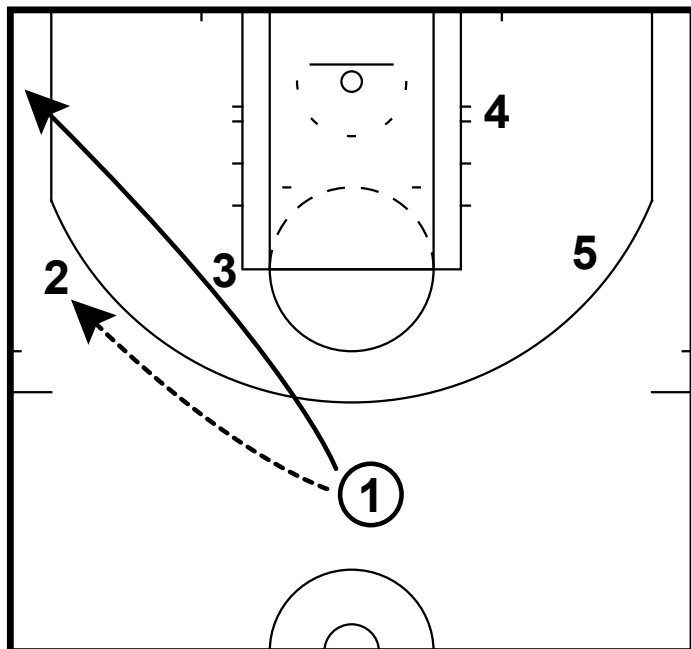
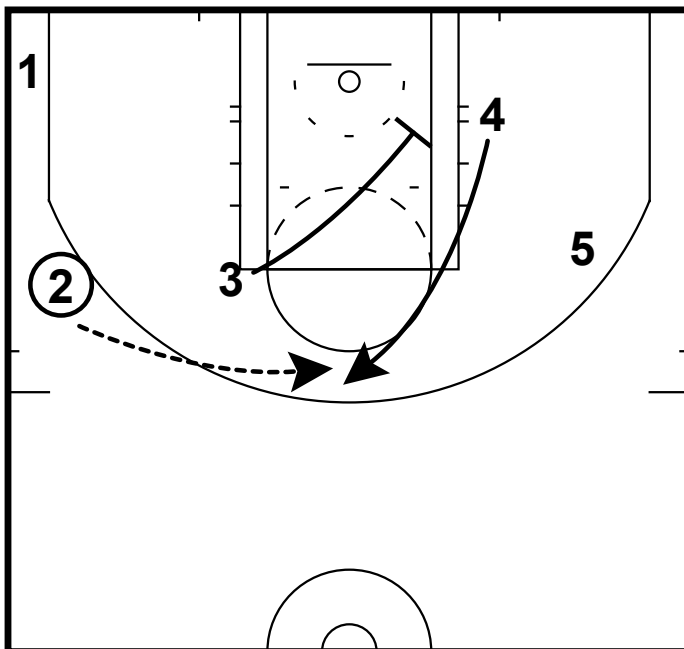


2015 HS GIRLS ELITE 100: #7 MARINA MABREY



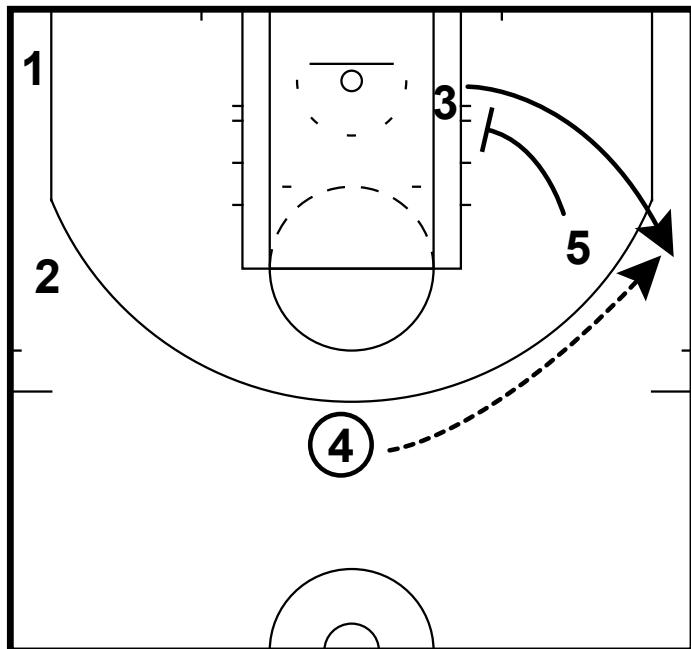
- 1) This a set that the Bulls ran in '12-13 for Rip Hamilton to get him a quick shot.
- 2) The pg would enter the ball to the wing and then rub off the shooter at the elbow for a corner cut.

2015 HS GIRLS ELITE 100: #7 MARINA MABREY



- 1) After the rub screen, 3 will set a diagonal screen down for the 4 player who receive the ball near the top of the key.

2015 HS GIRLS ELITE 100: #7 MARINA MABREY



- 1) Now the opposite post player will pin-in for the shooter on the opposite block.
- 2) 4 will reverse the ball to the open shooter, because ~~x3~~ has had to help on consecutive screens.