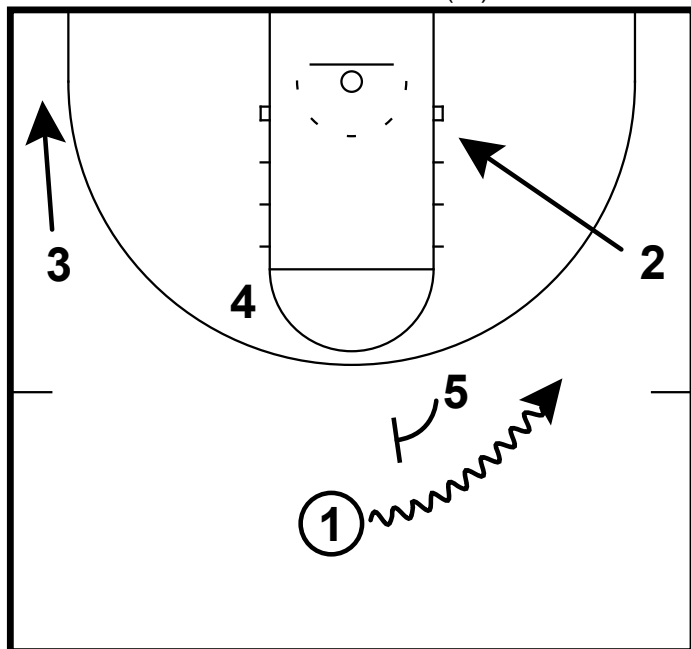
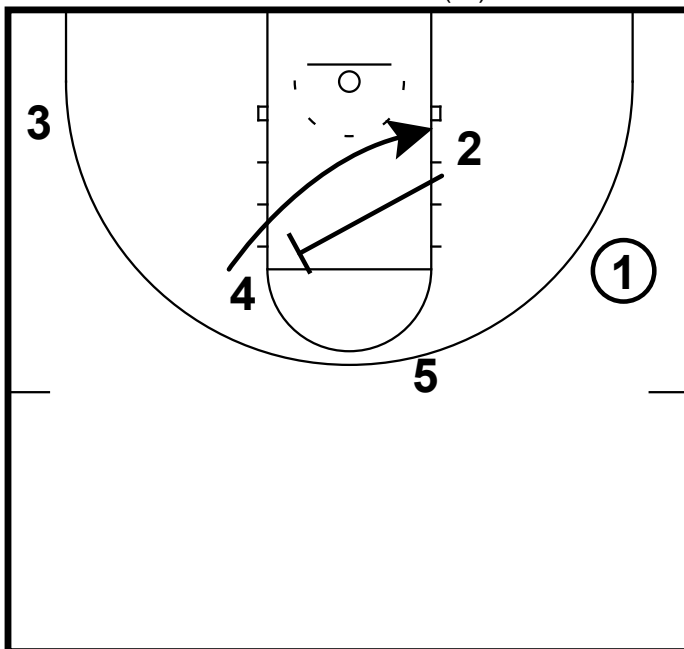


HALF-COURT: MARYLAND(W) DOUBLE



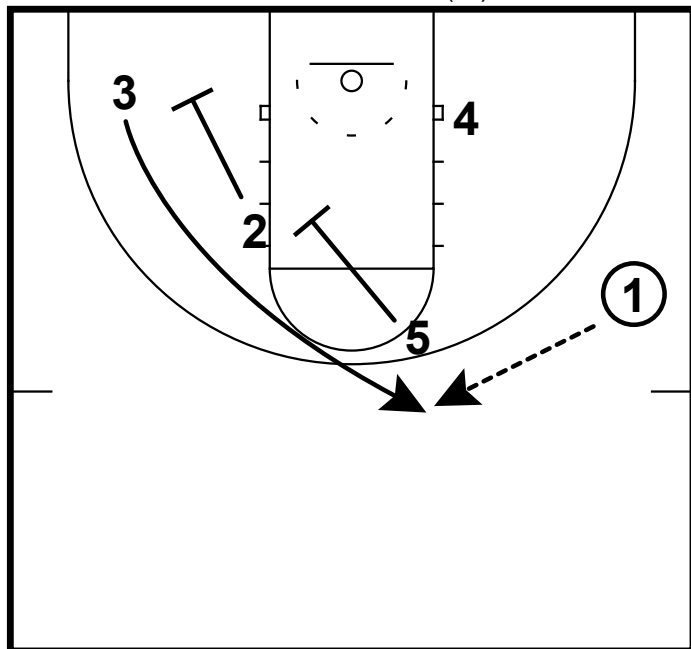
MARYLAND(W) DOUBLE
 5 ball screen 1
 2 cuts low(can look for back cut)
 3 spaces to corner

HALF-COURT: MARYLAND(W) DOUBLE



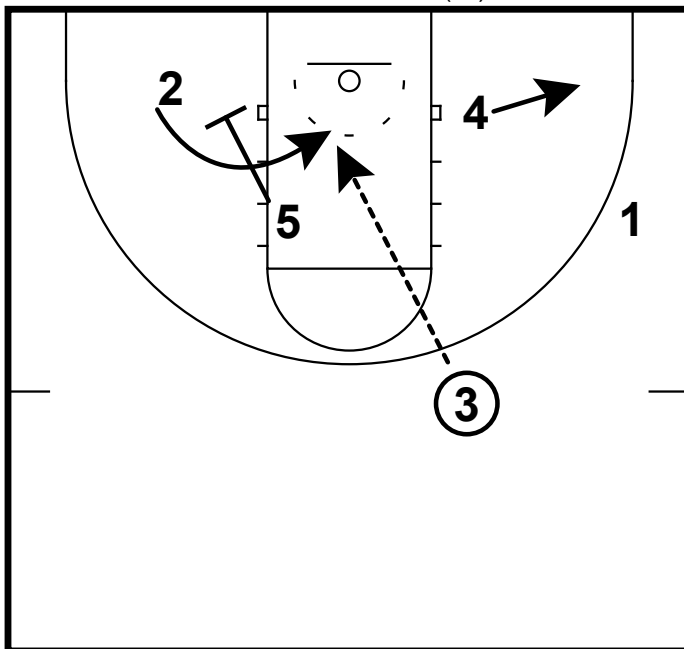
2 screens 4
 1 passes to 4 if open

HALF-COURT: MARYLAND(W) DOUBLE



2 and 5 set double screen for 3
 1 passes to 3

HALF-COURT: MARYLAND(W) DOUBLE



5 screens for 2
 2 curl cuts off screen
 4 spaces out to take away help