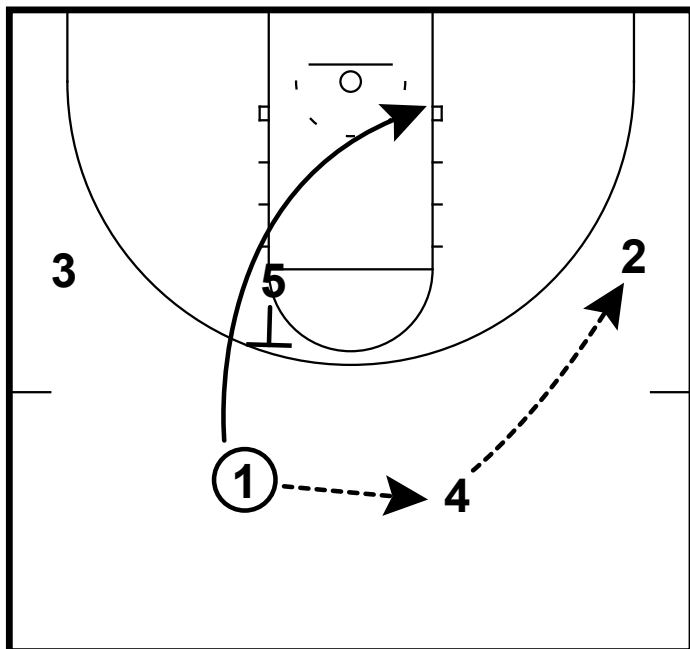
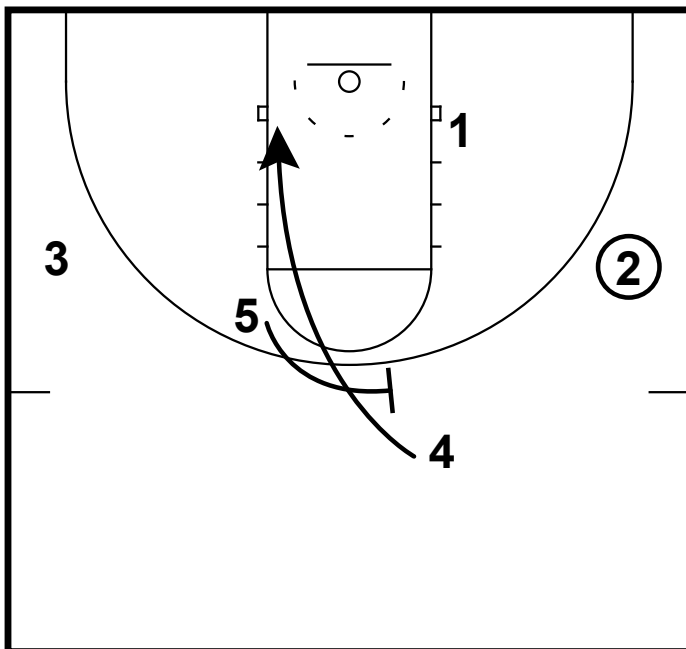


SHUFFLE SERIES-PART 1



SHUFFLE SERIES-PART 1

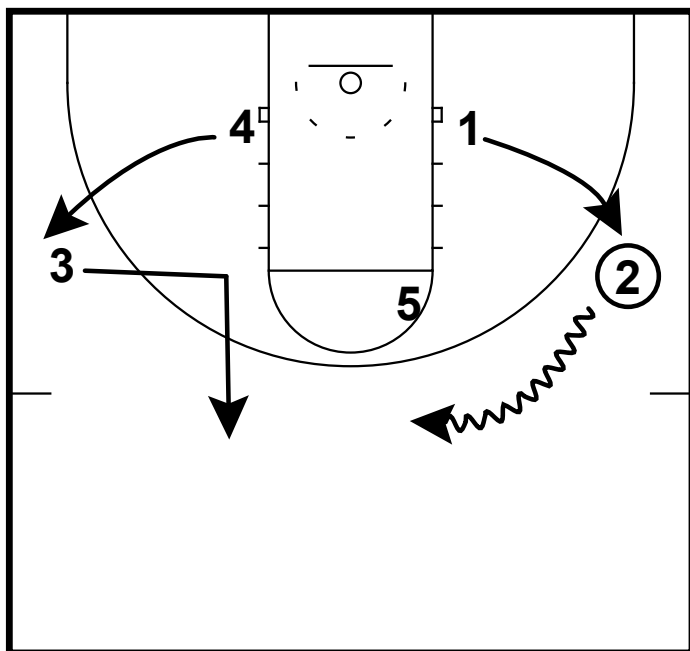


SHUFFLE SERIES

- 1 passes to 4
- 4 passes to 2
- 1 makes shuffle cut off 5 to ball side block

- 5 sets middle flare for the 4
- 4 cuts tight and goes opposite block

SHUFFLE SERIES-PART 1



- 2 dribbles up top
- 3 makes an elbow cut to get open
- 1 and 4 fill the wings