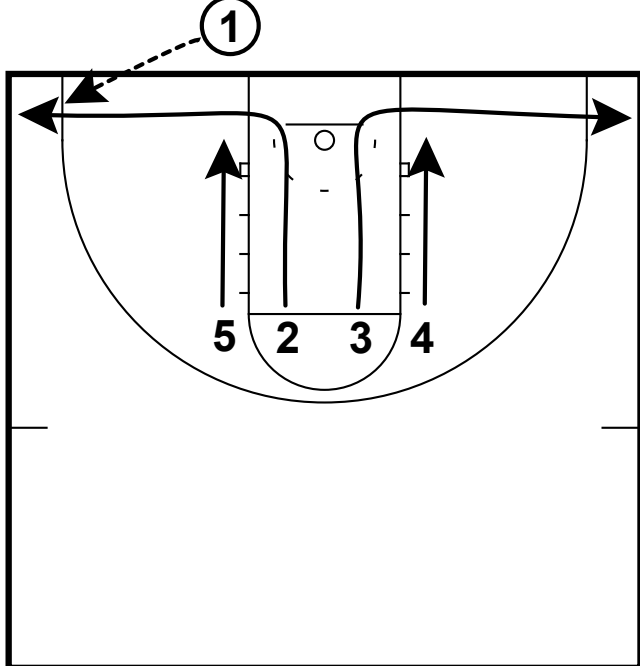
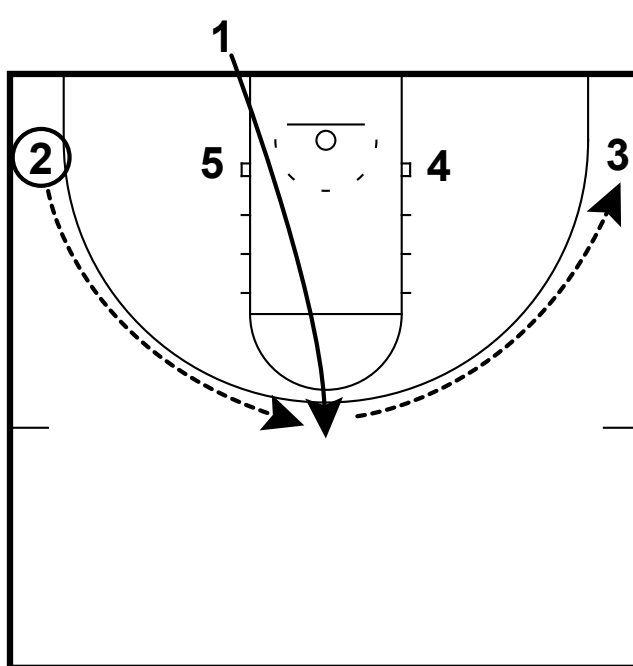


BOB: UGA LINE



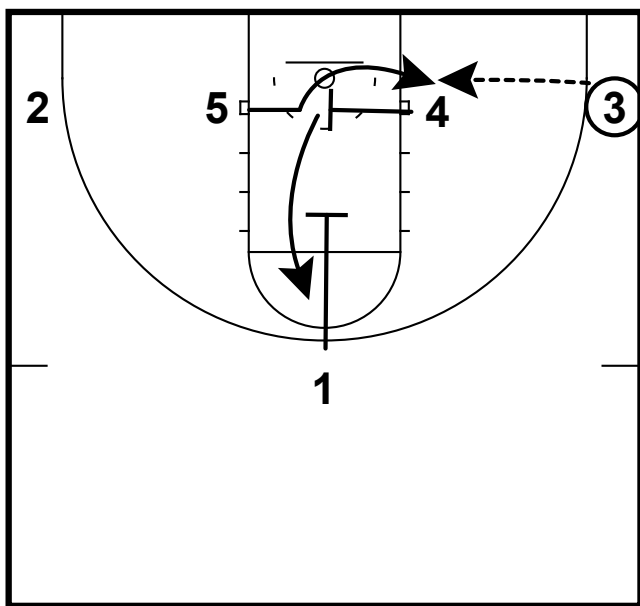
This line set keeps the guards on the inside and the posts on the outside. The guards want to run down the lane quickly then break to the corner. The posts follow and then establish themselves on the block.

BOB: UGA LINE



Now with the defense flattened out, the point guard sprints to the top of the key and the ball is reversed to her then the swung to the corner.

BOB: UGA LINE



Coach Landers in his pre practice meeting talked about the timing of this cross screen. Going too soon would get the post player on the block before the ball is there. Going too late and x5 will already have jumped to helpside.

This can easily turn into a screen the screener action.