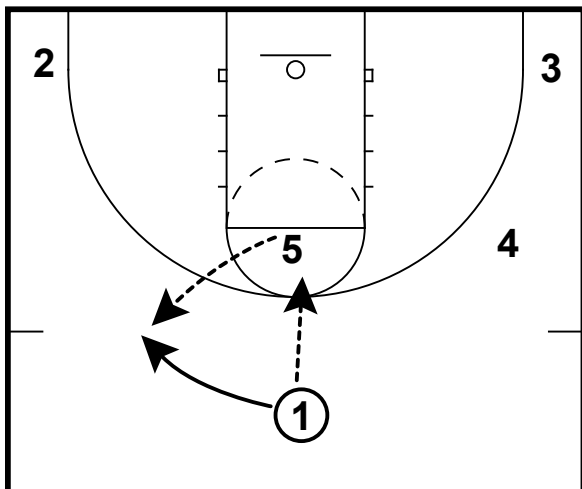


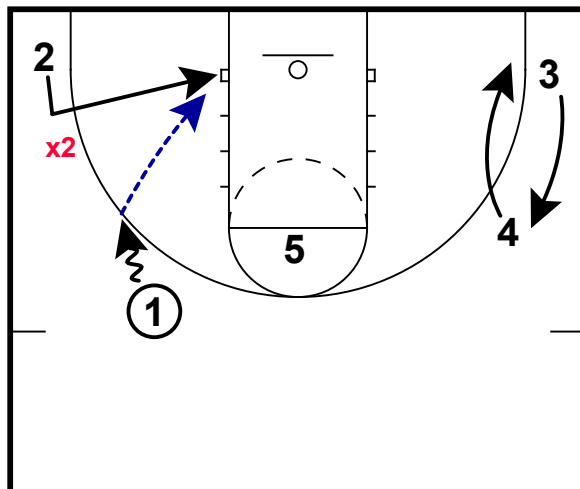
HALF COURT: PEBBLEBROOK MONEY



Pebblebrook very well could be the best high school team in the state of Georgia this season. They feature a stacked lineup of numerous D1 prospects, which balanced between the front court or the back court.

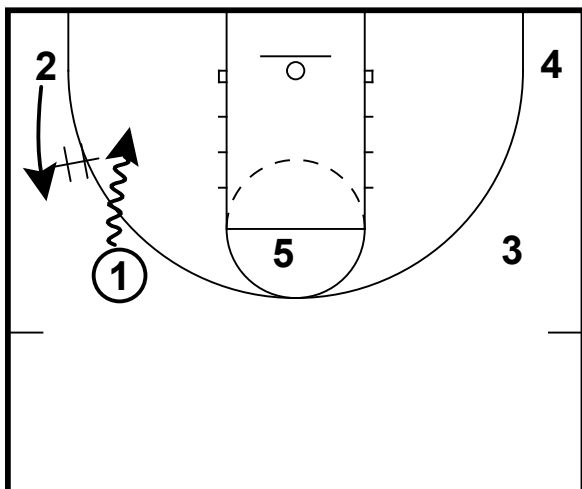
This set that they run to perfection "Money," features multiple options. However, it is all keyed by high post entry.

HALF COURT: PEBBLEBROOK MONEY



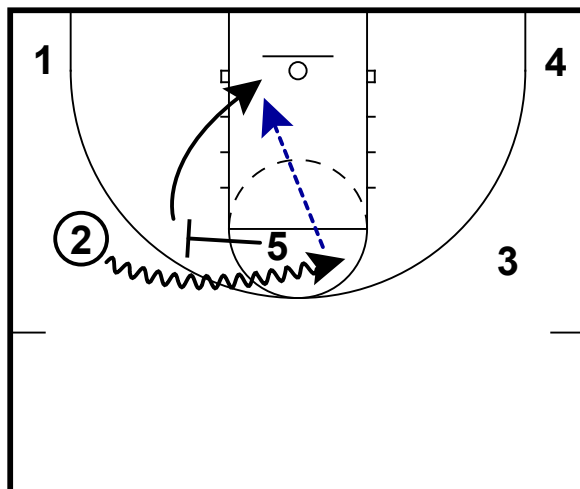
The first option that they got is the back door cut. Once the PG gets the ball and dribbles at the guard in the corner - 2 will cut back door if over played by the defender.

HALF COURT: PEBBLEBROOK MONEY



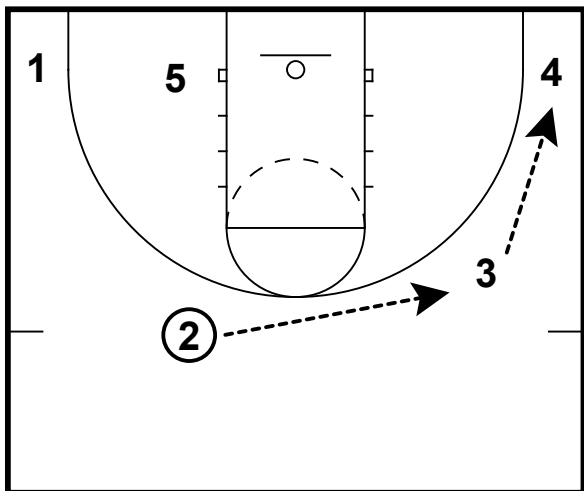
This option comes if the defender plays off of the corner guard. The PG will get a handoff for the guard in the corner.

HALF COURT: PEBBLEBROOK MONEY



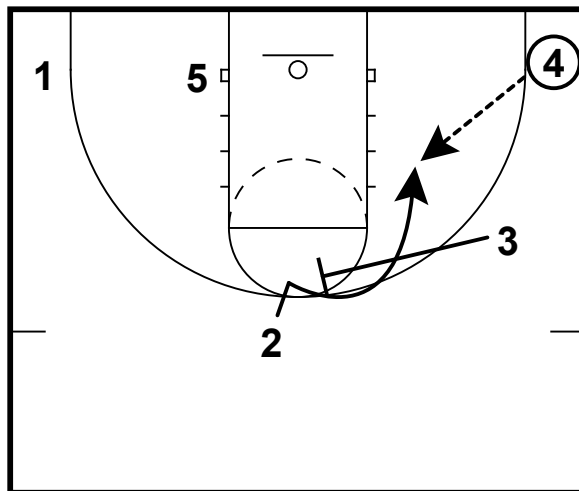
Now the off-guard will receive a high ball screen from the high post, which leads to an easy pick and roll situation.

HALF COURT: PEBBLEBROOK MONEY



If the first two options are not there, this sets up their weakside action. This allows for the guards to read the defense and make plays.

HALF COURT: PEBBLEBROOK MONEY



Here with the ball in the corner, the guards have an open side to cut into the lane and make plays.