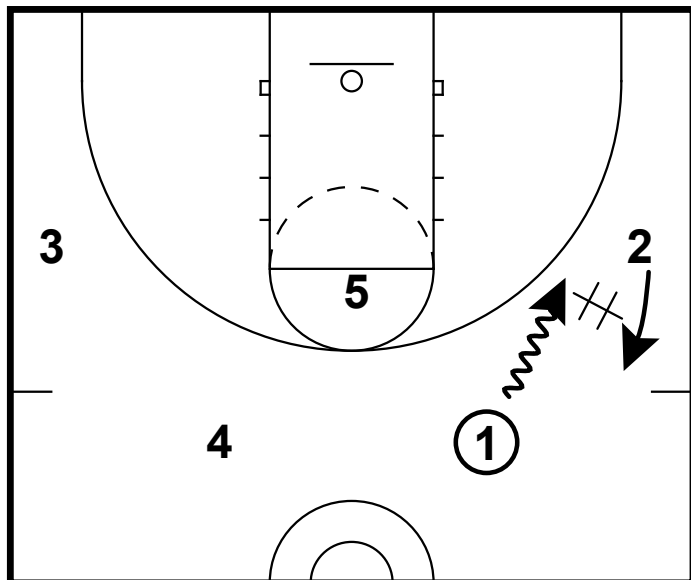
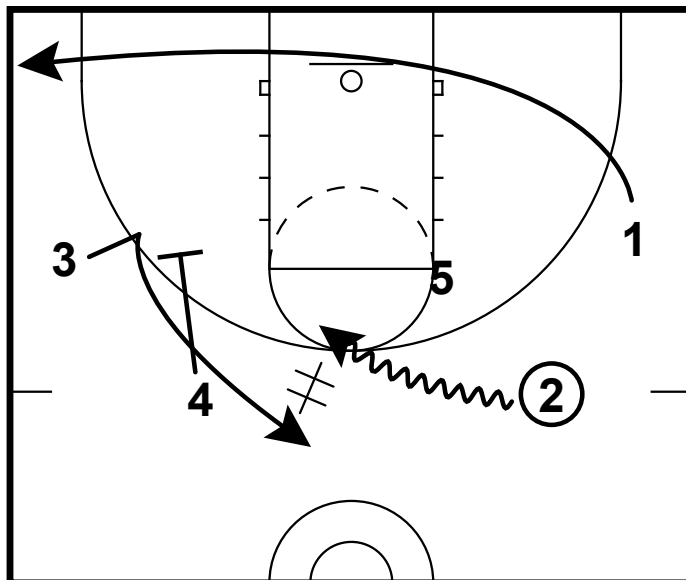


HALF-COURT: BALL SCREEN FLOW



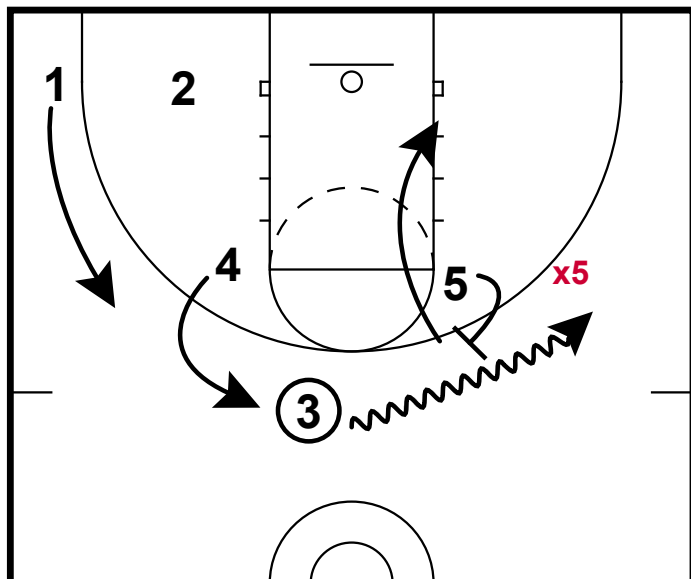
Half-Court Sets

1. This 4 high set starts with some dribble handoff action above the free throw line and the post player at the free throw line.



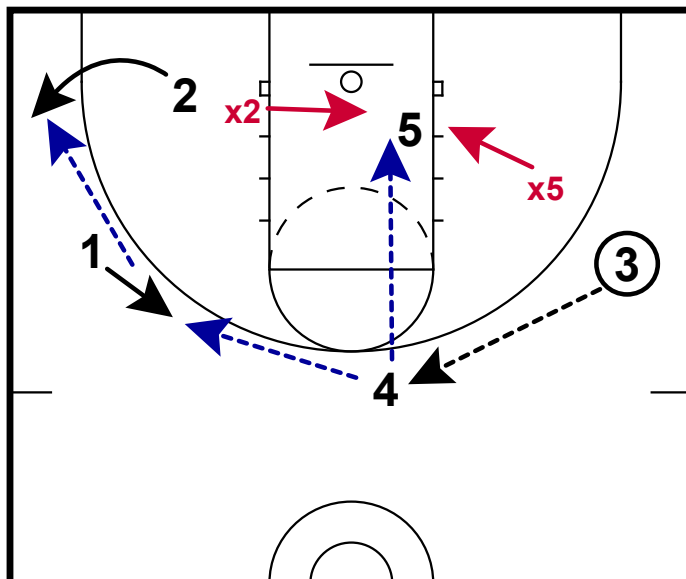
Half-Court Sets

1. Working away from the basketball is a down screen for the for the opposite wing.
 2. 2 will drive it hard towards the free throw line and then hand off to 3 cutting to the top of the key. (You could set a ball screen with 5 right here)



Half-Court Sets

1. 1 will clear to the other side to create a 2 man game situation.
 2. If x5 hedges the screen hard here, 3 should stretch it far to the wing. 5 should roll hard to the rim - if the ball handler can make the pass here, this is a good opportunity for a quick score.



Half-Court Sets

1. If the pick and roll is not there, 3 should throw the ball back to the top of the key back to 4 who has followed the action.
 2. If x5 has stretched to the wing, this is a great chance for a hi-lo pass.
 3. If help comes from the backside guard, a quick reversal should find an opportunity for a shooter.