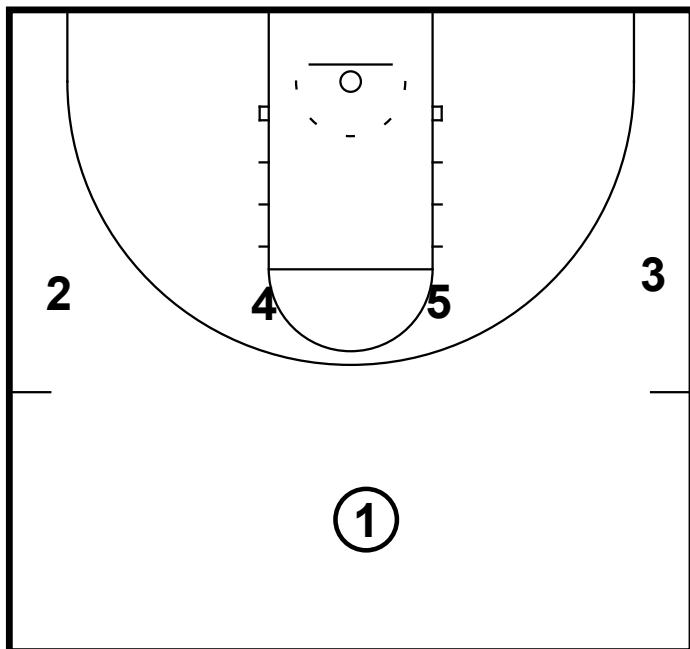
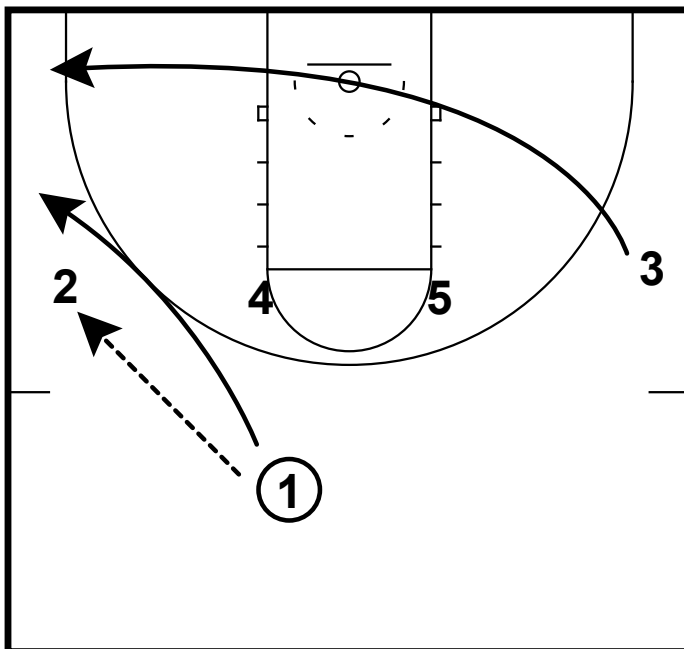


HALF-COURT: 1-4 DRAG



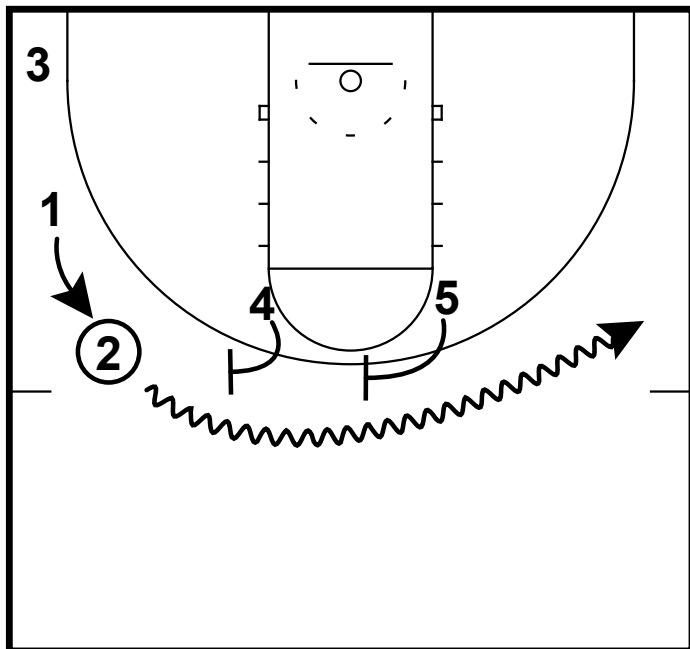
1-4 high set

HALF-COURT: 1-4 DRAG



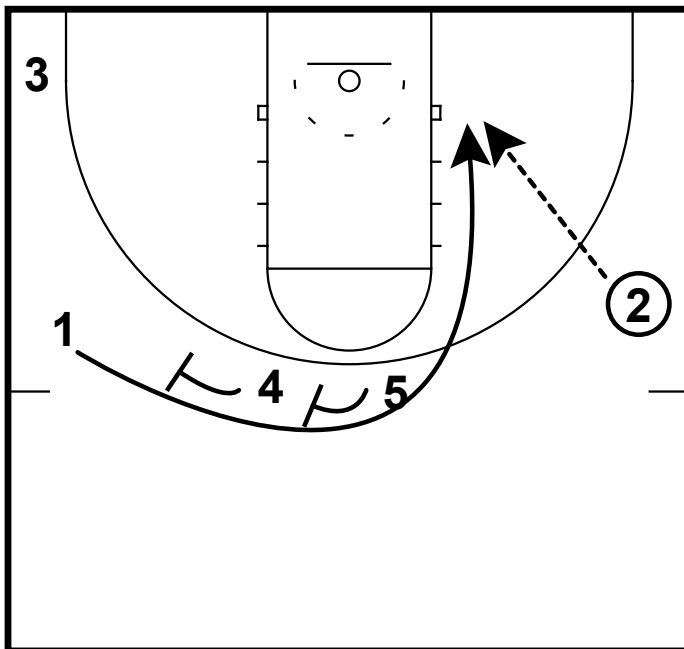
1 can either pass to 2 or dribble handoff with 2
3 cuts to opposite side

HALF-COURT: 1-4 DRAG



4 and 5 set a double ball screen for 2
2 can look to attack off the screens

HALF-COURT: 1-4 DRAG



If 2 does not score then 4 and 5 set the double for 1
1 curls off the screen and gets a pass from 2