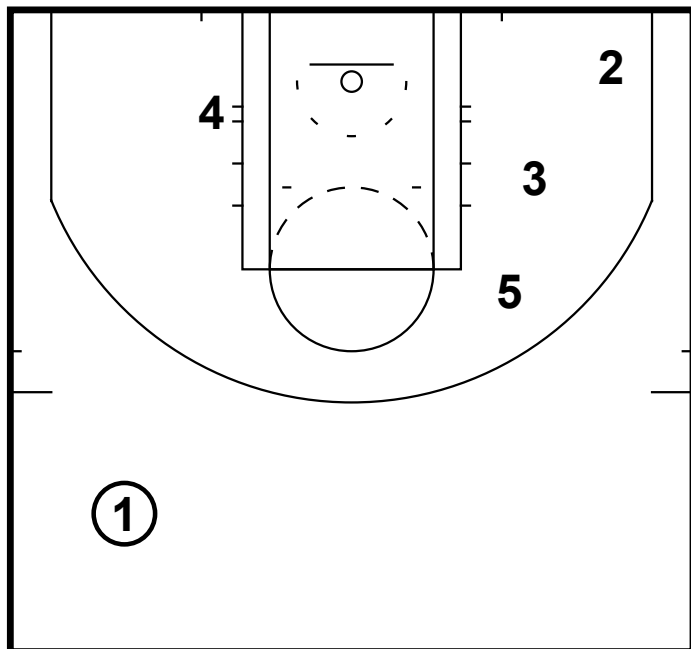
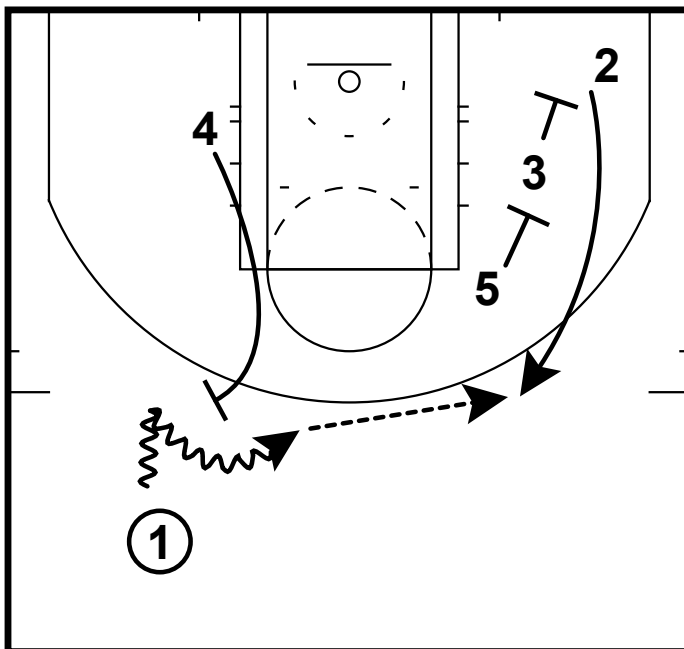


HALF-COURT: CURRY FLARE



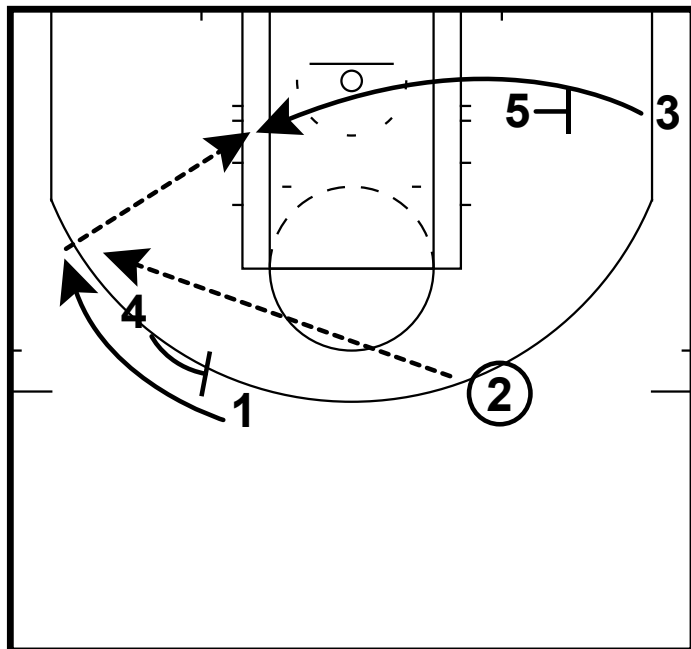
Here is a set the Golden State Warriors ran to utilize all of Stef Curry's strenghts as a PG. Curry can do it all whether it is shooting, passing or driving to the rim

HALF-COURT: CURRY FLARE



4 sets a ball screen for 1  
 1 can attack rim if available  
 3 and 5 set a double away for 2  
 2 can shoot if open

HALF-COURT: CURRY FLARE



4 sets a flare screen for 1  
 2 passes to 1  
 1 looks for shot  
 If 1 is not open then 5 sets a flex screen for 3