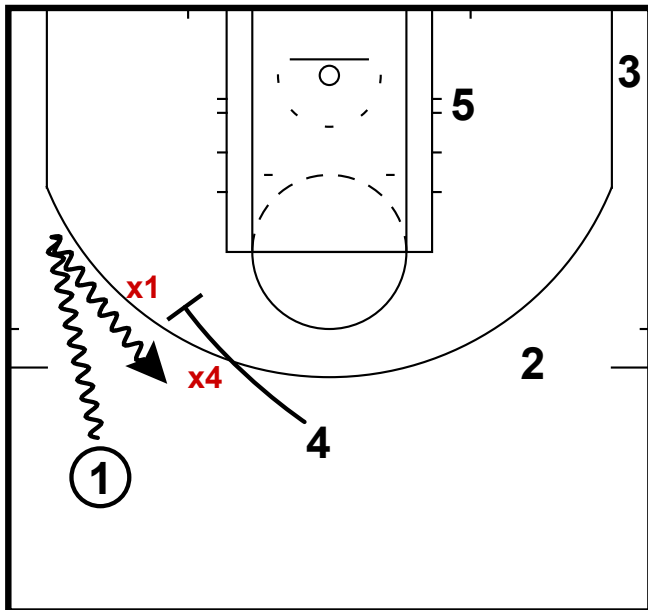
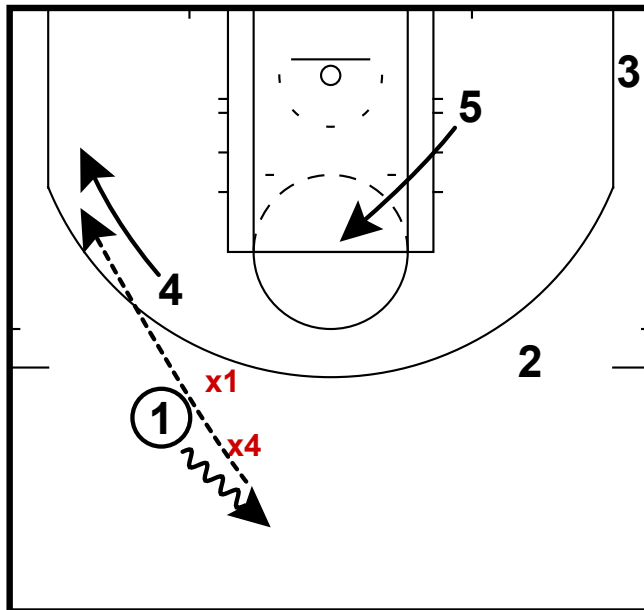


HALF COURT: SIDE BALL SCREEN



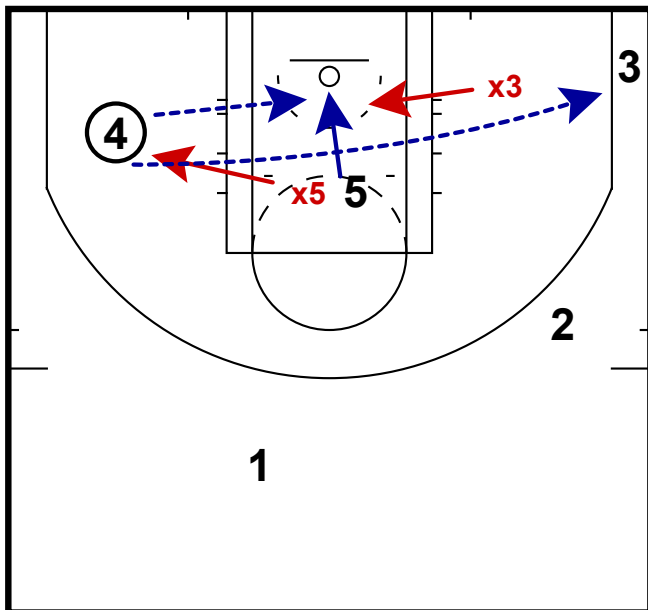
This is a wing ball screen action where there is an overload opposite of the ball side.

HALF COURT: SIDE BALL SCREEN



If a double team happens, then 4 will slip to the corner. 5 steps up for a possible outlet. However, 4 slipping to the corner will provide an open jumper.

HALF COURT: SIDE BALL SCREEN



Hubie Brown says that versus good teams:  
 1st pass won't get open shots  
 2nd pass will get an open shot  
 Here we see some options, 5 slipping to the rim when x5 leaves him. Or the skip to 3 if x3 helps over.  
 Hubie also says "when a defender leaves you, go to the front of the rim."