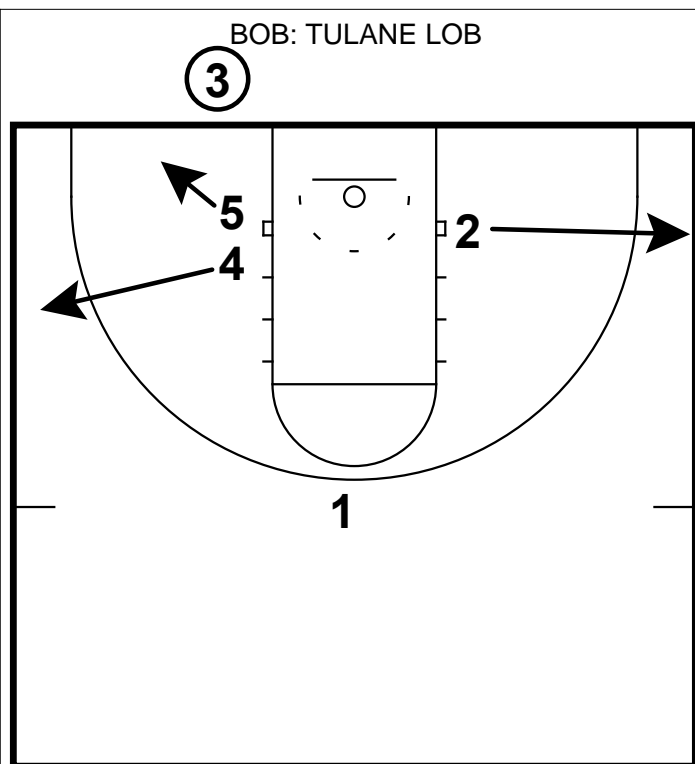
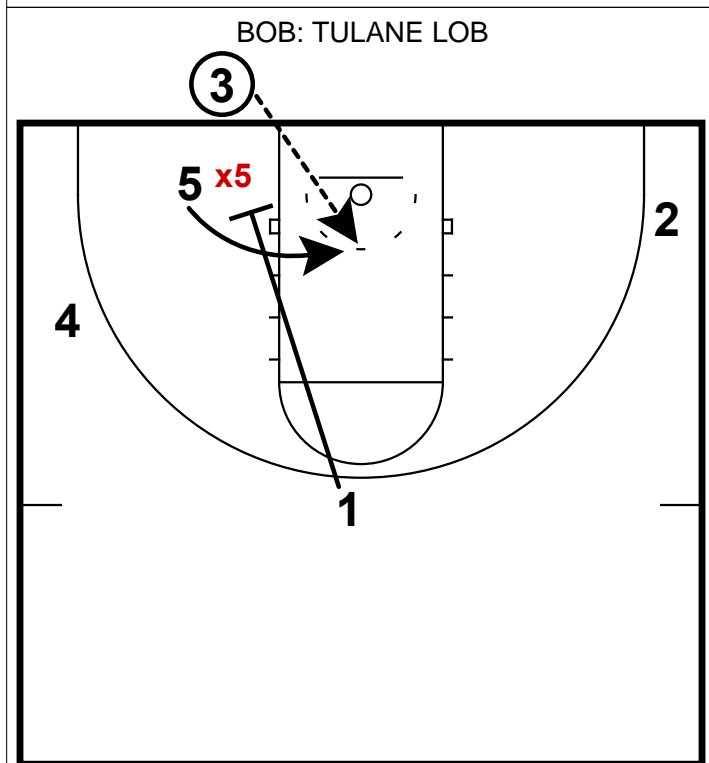


1. With :01 on the shot clock, Tulane had the ball on the baseline and needed to get a quick shot off.



1. They sent 4 out to the wing first and then the opposite guard to the corner to clear the lane.
 2. They had 5 slide one step to the baseline to create some space for the lob pass.



1. They bring the point guard to set a back screen here for the post who then curls to the front of the rim.
 2. Because of the quick action - it was hard for UConn to jam the cutter.