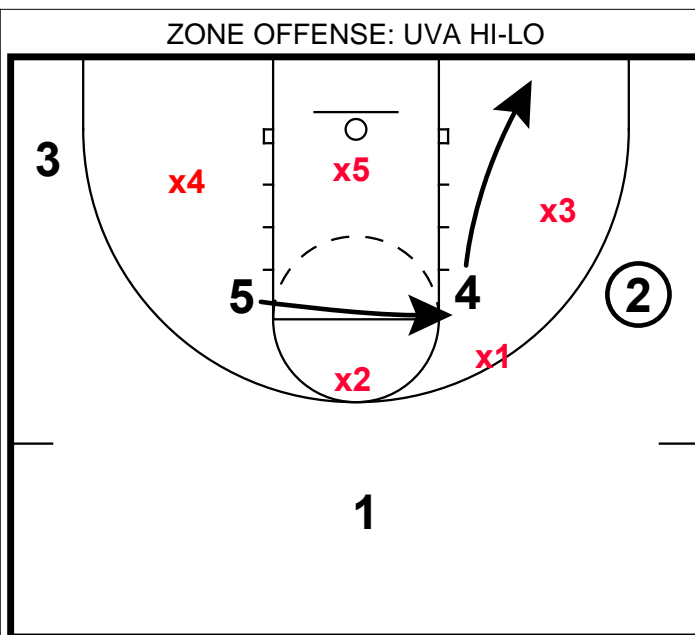
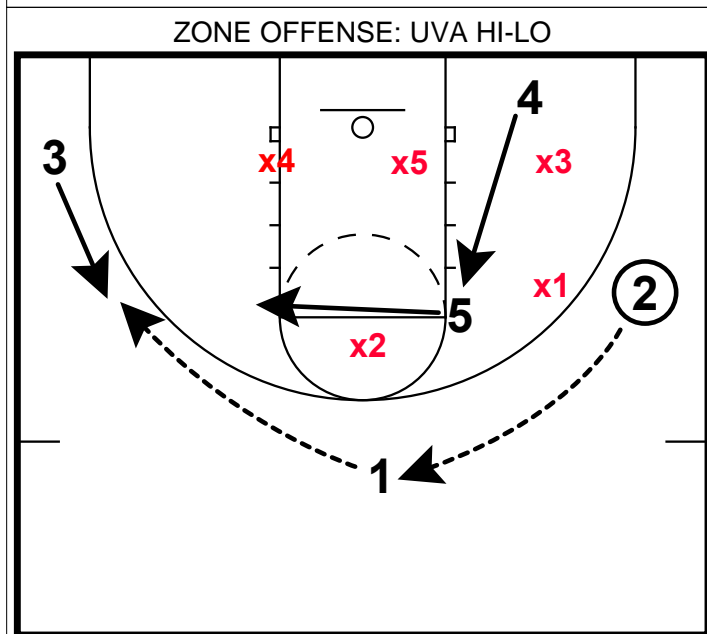


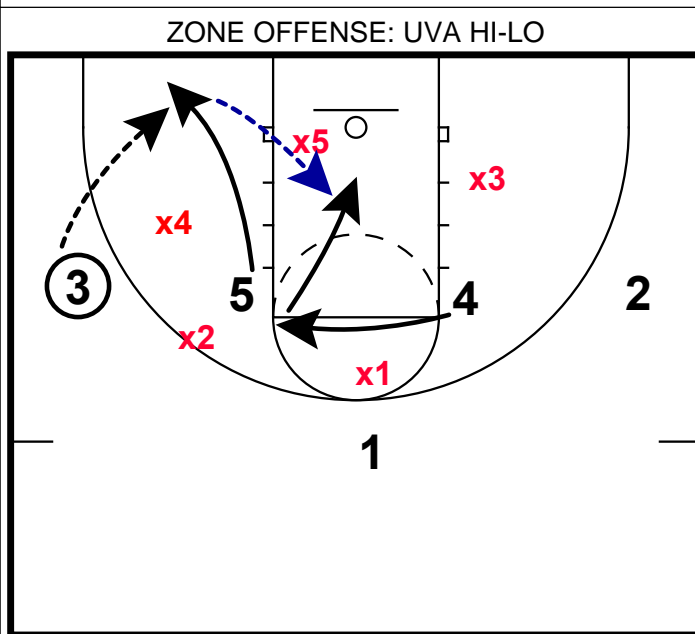
The key part about this UVA zone offense is filling both high post spots. Their wings are mobile finding the gap on the zone.



When the ball is entered to the wing, the ball side post fills the short corner. The opposite post fills a gap around the elbow area.



When the ball is centered back at the top of the key, both posts refill their spots in the middle. This can create confusion and chances for entries here.



The ball being swung back to the opposite wing, this can create a "step-out/dive" action. Especially when the backside forward over extends on the wing here.