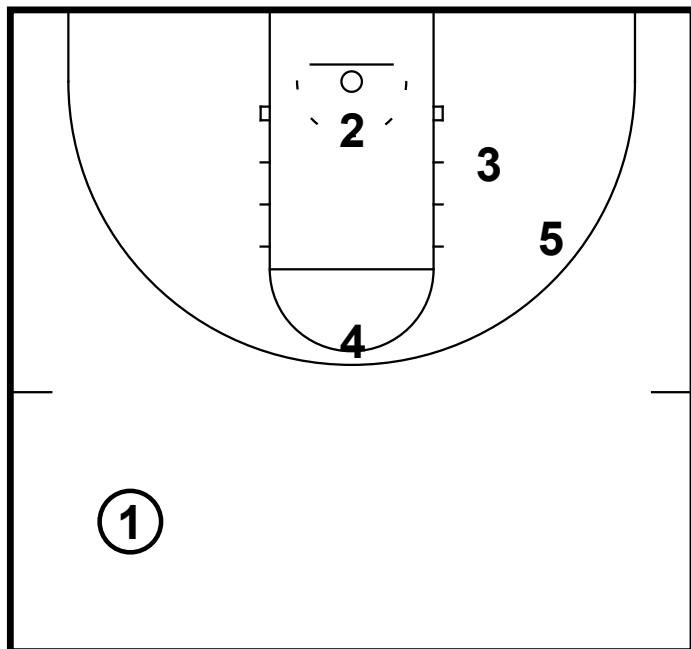
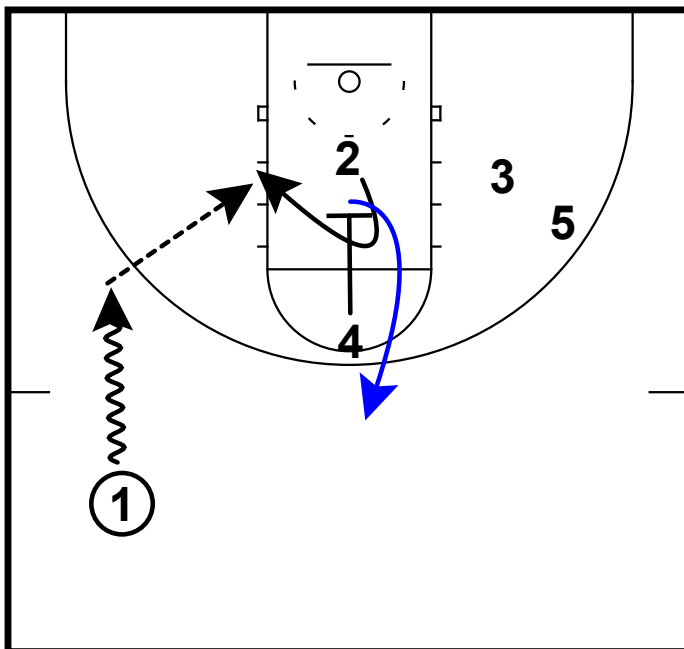


HALF-COURT: CYCLONE CURL

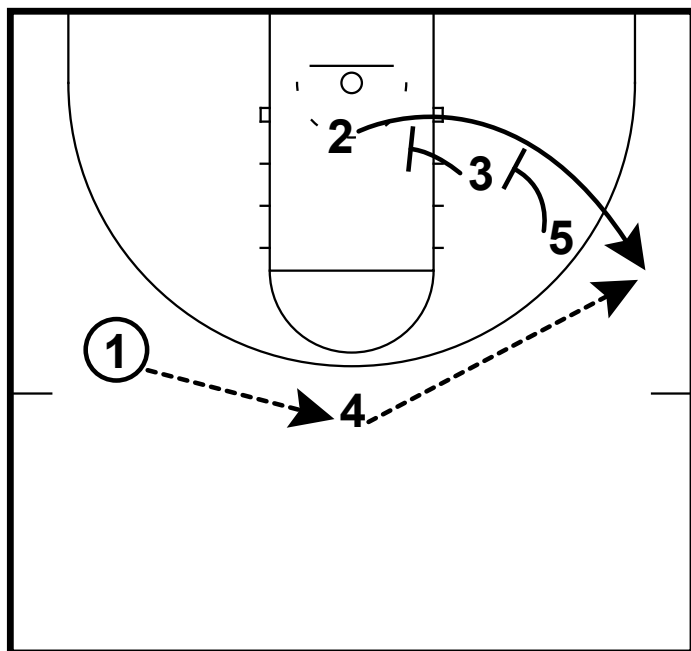


HALF-COURT: CYCLONE CURL



1 dribble enters the left wing
 4 sets a pin down and 2 curls off it
 4 second cuts back up top
 1 passes to 2 if open on curl

HALF-COURT: CYCLONE CURL



If 2 is not open then 1 passes to 4
 2 comes off the double from 3 and 5
 4 passes to 2 for the shot