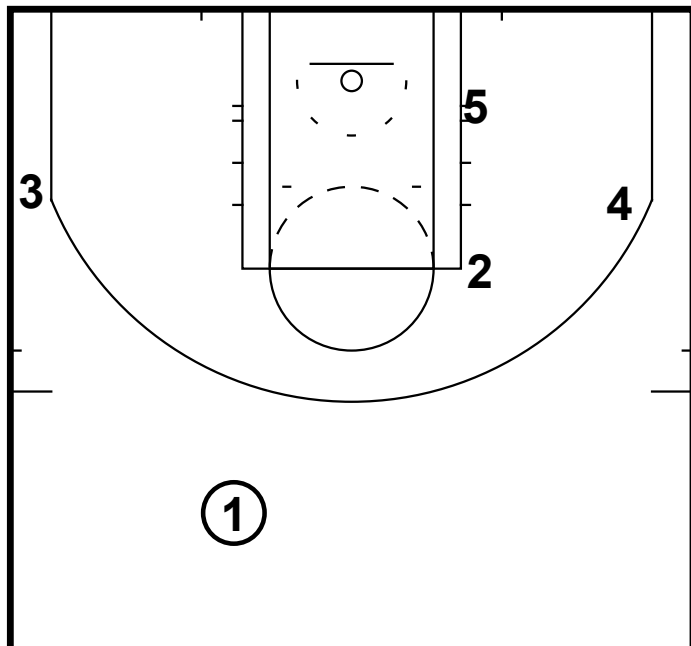
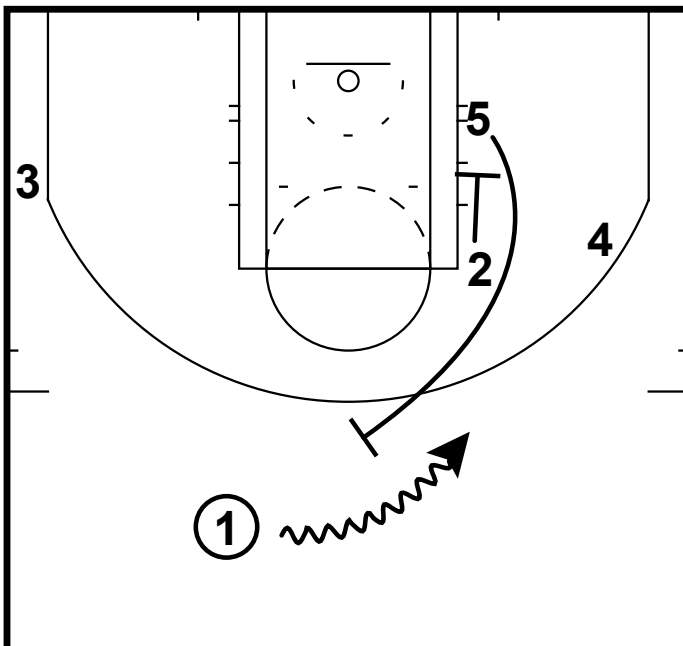


HALF-COURT: GOLDEN STATE PIN



HALF-COURT: GOLDEN STATE PIN

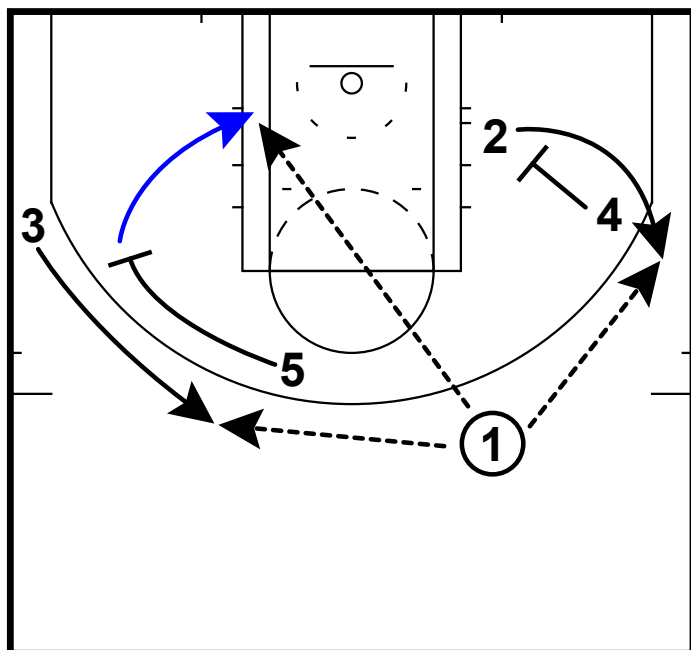


Here is a set from the Golden State Warriors that they have run during the first 2 games of the NBA playoffs. This is a set that has multiple options that puts pressure on the defense to really have to communicate and defend.

- 1-Curry
- 2-Thompson
- 3-Barnes
- 4-Greene
- 5-Bogut

2 sets pindown for 5  
 5 comes off screen and ball screens for 1  
 1 can attack rim off screen

HALF-COURT: GOLDEN STATE PIN



4 screens 2  
 5 screens 3  
 5 rolls to rim  
 1 can hit the open man for a shot