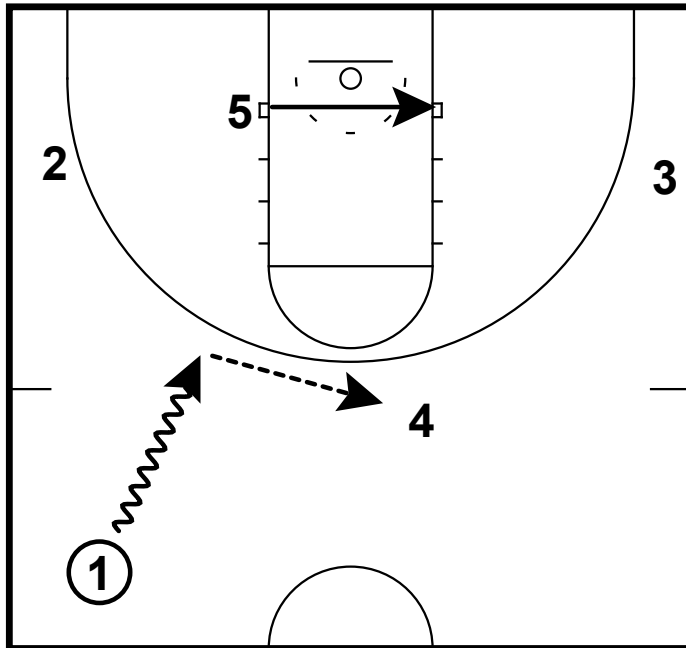
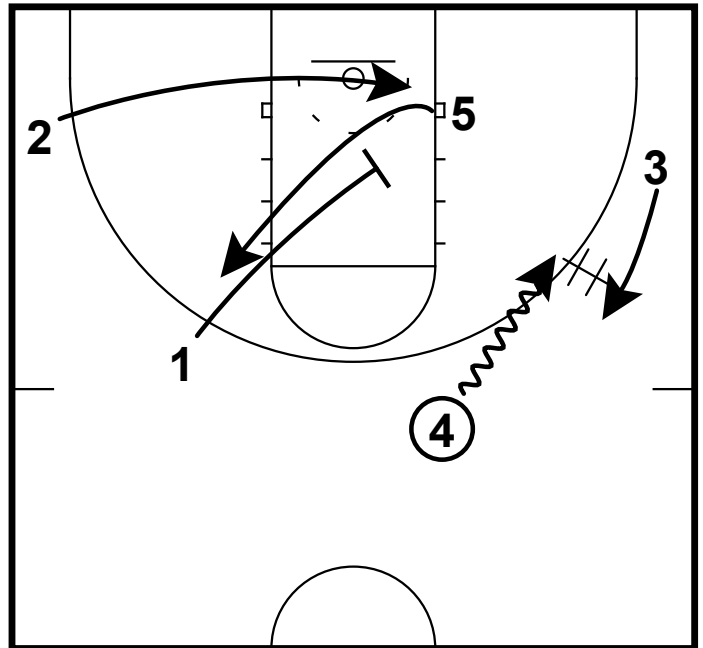


SFA: BREAK PINCH POST
Half-Court Sets



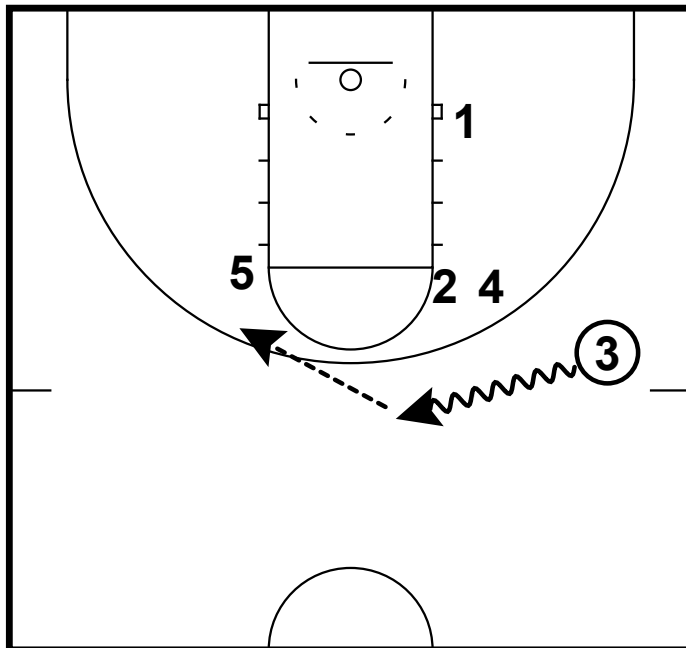
This action starts with typical break action with the first post down in the paint & the second post as a trailer.

SFA: BREAK PINCH POST
Half-Court Sets



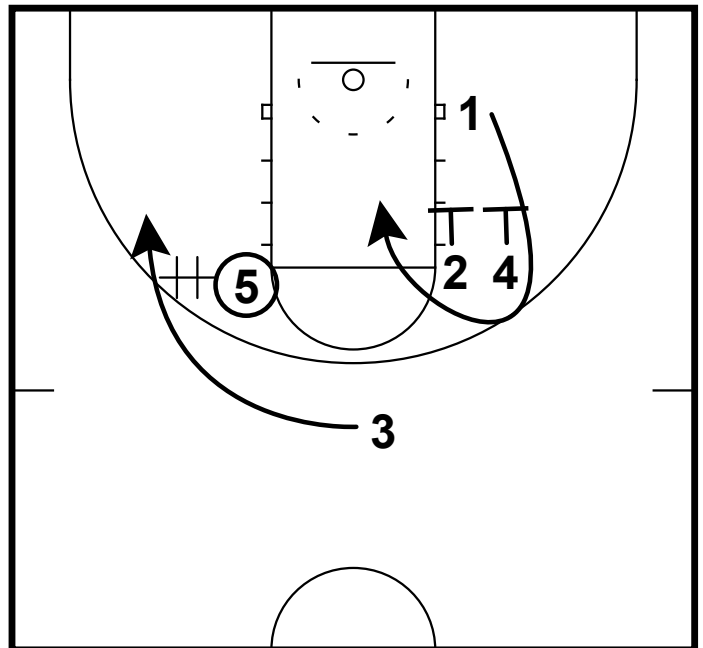
-4 is going to dribble at 3 for a dribble handoff action, while the PG & the C exchange spots (a Screen here works as well)
-2 is moving into the block area, only to move up to the elbow in the next frame.

SFA: BREAK PINCH POST
Half-Court Sets



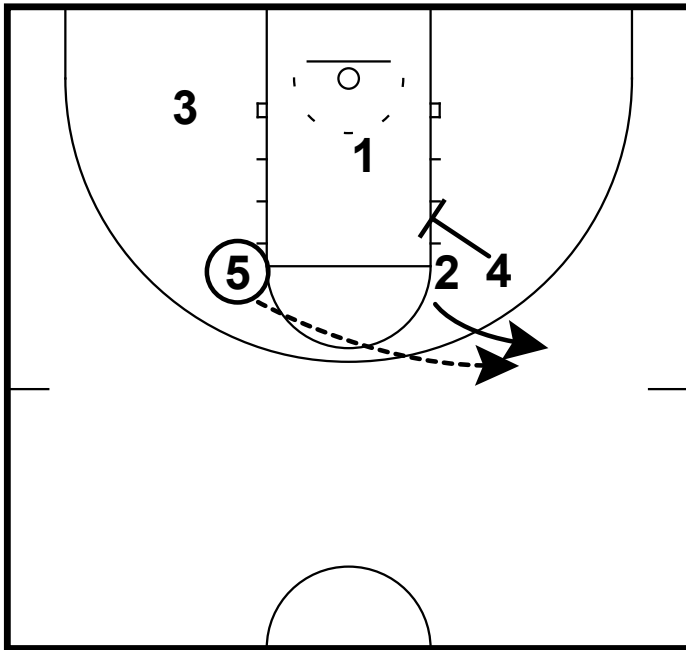
-2 & 4 now side by side, 3 dribbles to get an angle to feed 5 in the pinch post area.

SFA: BREAK PINCH POST
Half-Court Sets



-The first option here is to look for a handoff to 3 going to the basket.
-The second is to look at 1 on the curl off of a double screen.

SFA: BREAK PINCH POST Half-Court Sets



-If the first two options are not there, then making a 2nd cut off the curl could be open. 4 will slide in to set a screen.