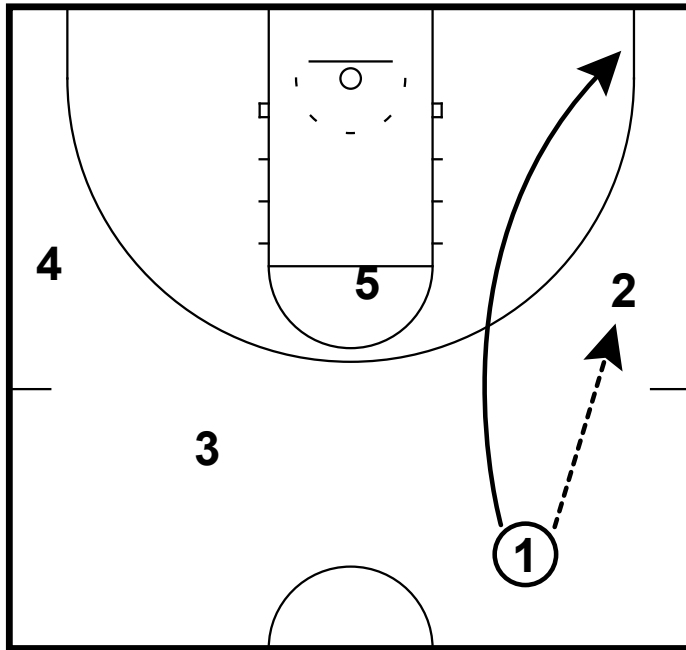
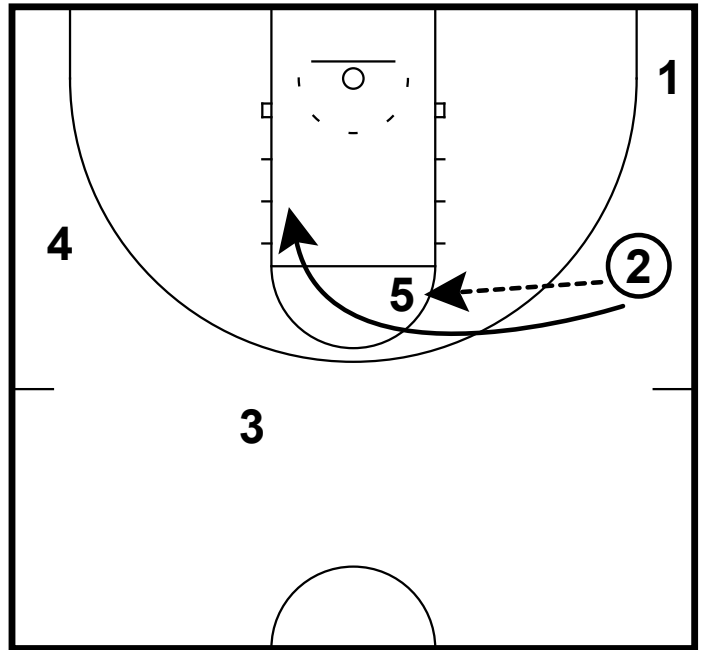


HALF COURT: SFA HIGH POST
Half-Court Sets



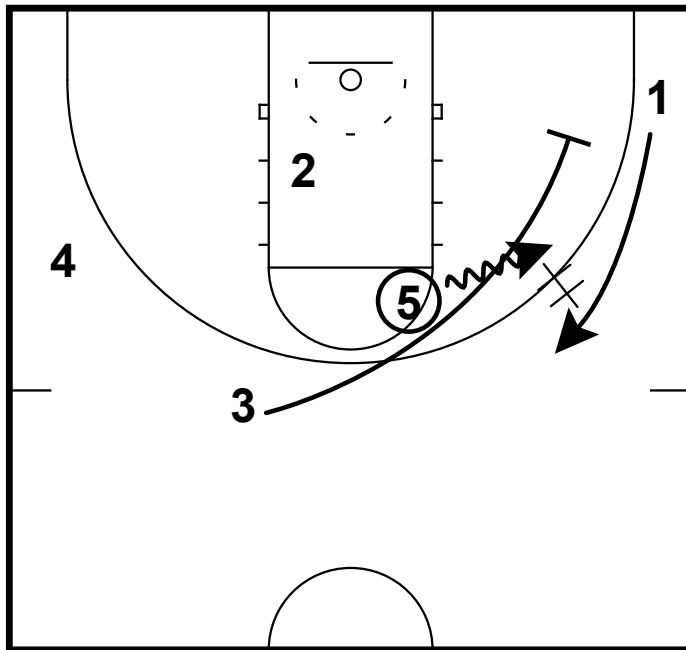
Stephen F. Austin men's team likes to utilize the high post for attack the defense. In this set, they enter the ball to the wing and the PG immediately makes a corner cut.

HALF COURT: SFA HIGH POST
Half-Court Sets



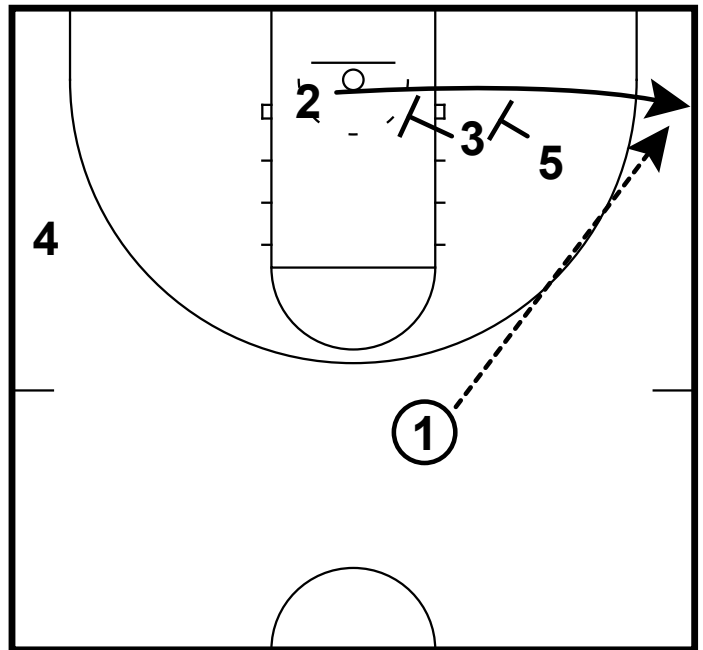
Now the ball is entered to the high post and the wing immediately executes a scissor cut over the top side.

HALF COURT: SFA HIGH POST
Half-Court Sets



Now the opposite wing comes over the top and then sets a screen for the PG in the corner. The post dribbles at the cutter, which makes it difficult for the defense to jam the cut.

HALF COURT: SFA HIGH POST
Half-Court Sets



Now with the PG with the ball at the top of the key, 2 will now come off of a baseline double screen. There is enough space here for the 2 to fade the cut to the corner if necessary depending on the defense defends it.