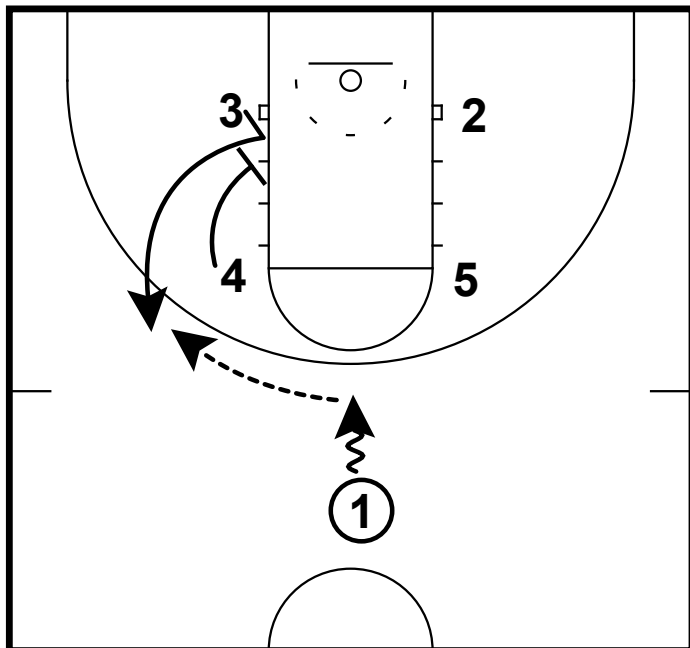


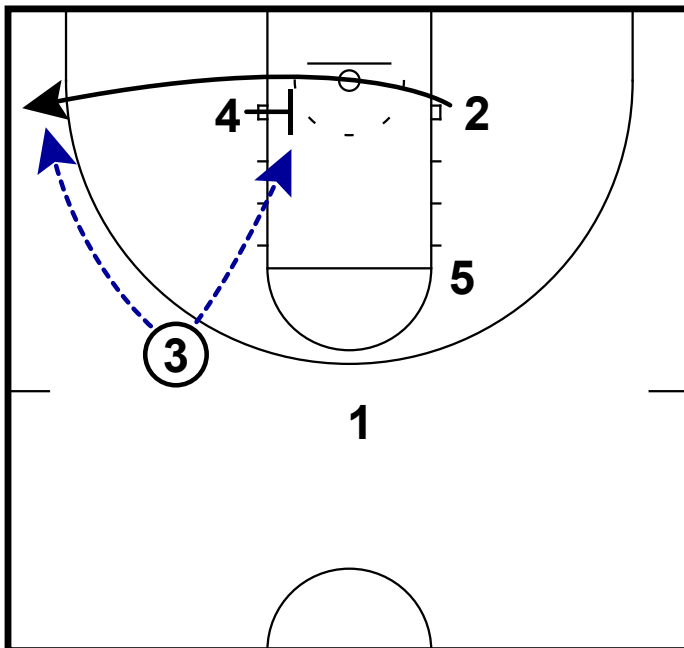
# Coach Hemi

HALF COURT: BOX FLARE



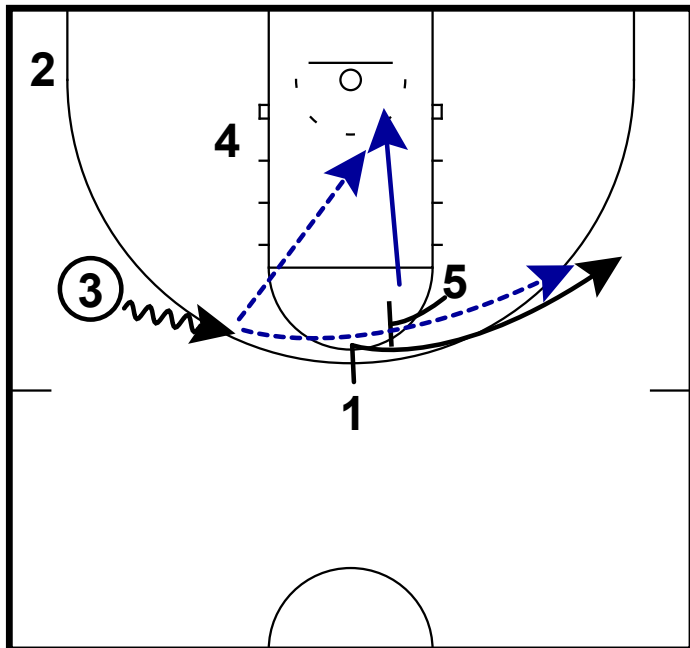
This is a box set that gets nearly every type of screen in a quick hitting fashion. Setting up the cut away from where the flare screen will come from is the first action.

HALF COURT: BOX FLARE



Once 4 has set the down screen, now he sets a baseline pin in screen. Setting this for your best shooter is wise. If x4 cheats on the screen even a little, 3 can deliver a pass with the helpside cleared out.

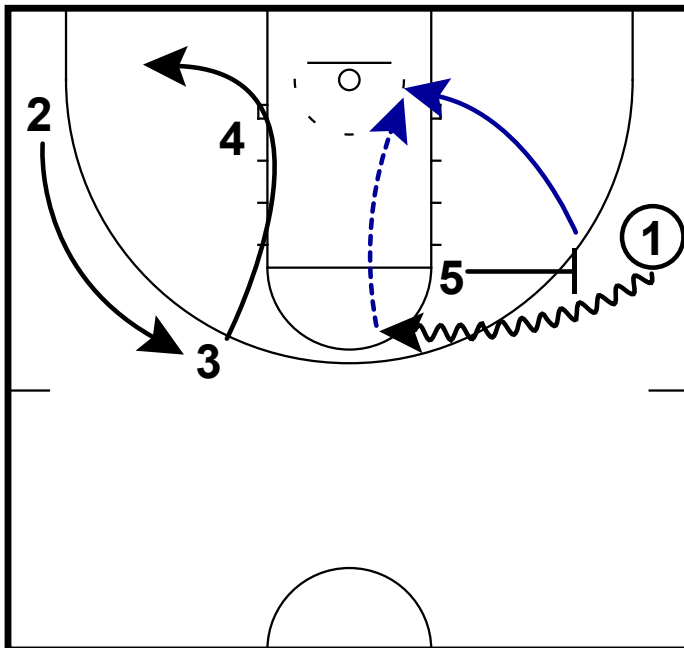
HALF COURT: BOX FLARE



If the baseline action yields no results, this is where you can get your PG a flare screen.

**\*\*Teaching point\*\*** Have 3 take 1-2 hard dribbles to freeze the helpside. This will allow the flare to work much better. There is also the slip option by the post, especially if x5 overhelps on the flare.

HALF COURT: BOX FLARE



With the ball on the wing in your PG's hands, now you have your best play-creator using a side ball screen. Reading the defense here is obviously important, but the help has been cleared and it is a good opportunity to get a pick and roll.

Movement on the weakside is key here. Getting 2 & 3 to flip positions keeps the help occupied.