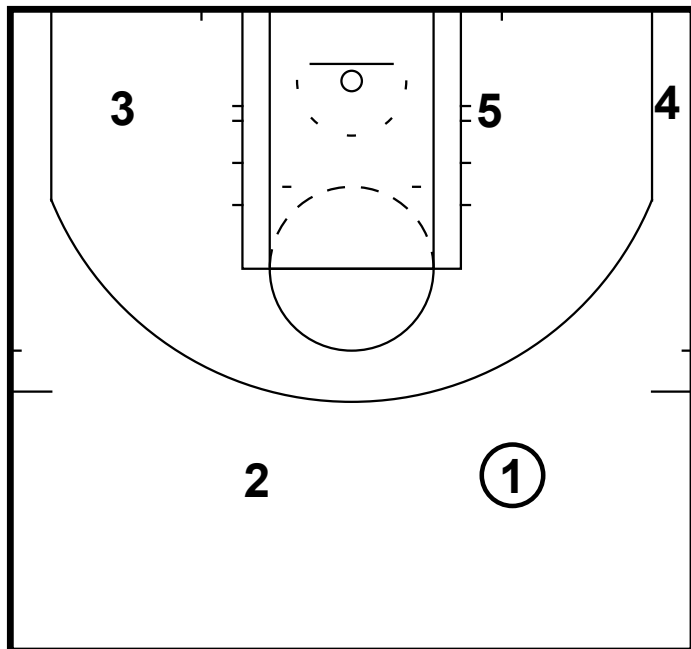
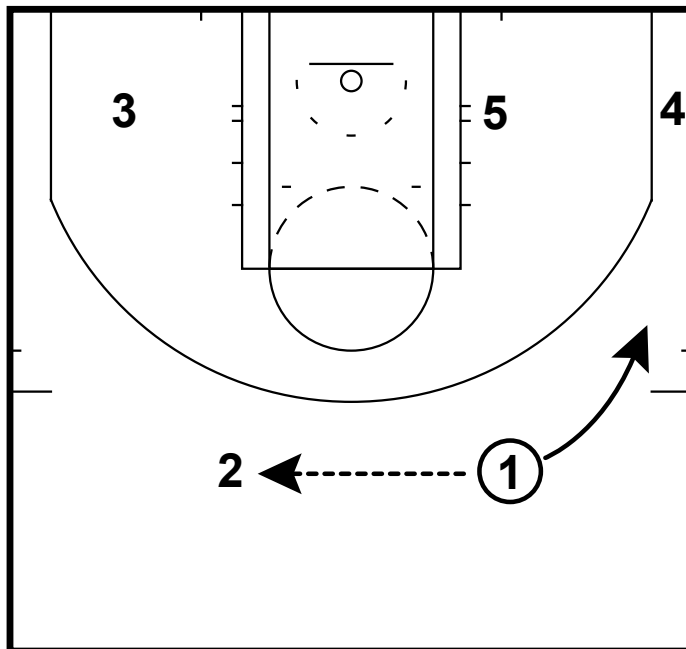


HALF-COURT: 15' SUMMER LEAGUE ROCKETS 23
FLARE



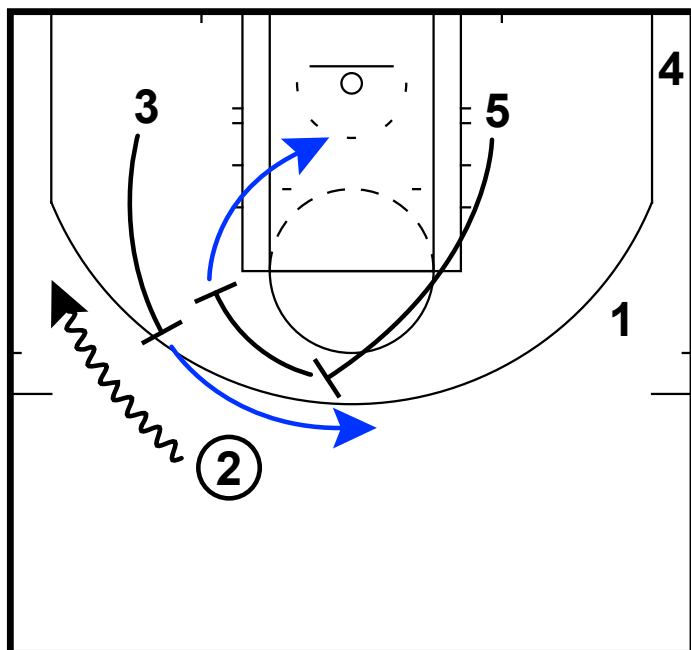
HALF-COURT: 15' SUMMER LEAGUE ROCKETS 23
FLARE



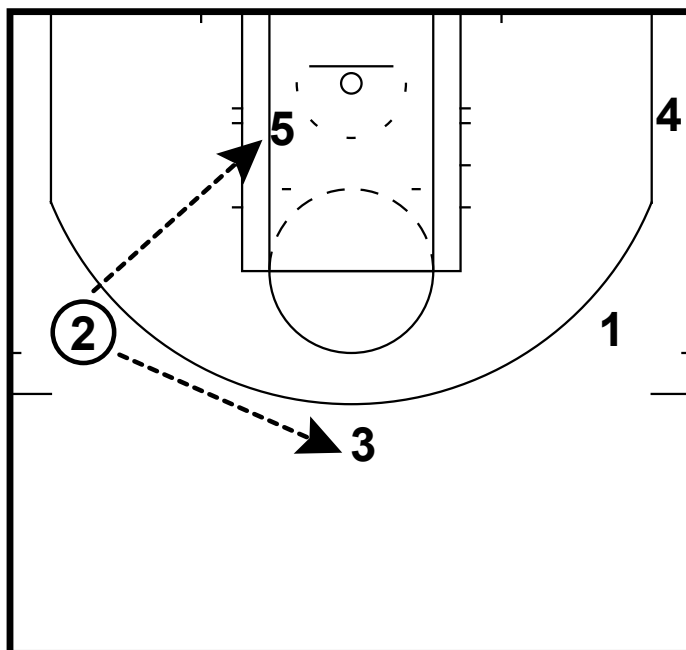
Here is a 2-3 alignment from the Rockets summer league team. Your first thought would be they are getting ready to run some sort of flex action. Instead they get a wide open shot from one of their better shooters.

1 reverses the ball to 2 and then spaces out

HALF-COURT: 15' SUMMER LEAGUE ROCKETS 23
FLARE



HALF-COURT: 15' SUMMER LEAGUE ROCKETS 23
FLARE



On 2's catch the 3 and 5 will come set screen's for 2
2 uses 3's screen
5 sets flare screen for 3 and then rolls to the rim
2 can pass to 5 on the roll or 3 off the flare
3 can also look to hit 5 on roll if the timing is executed properly