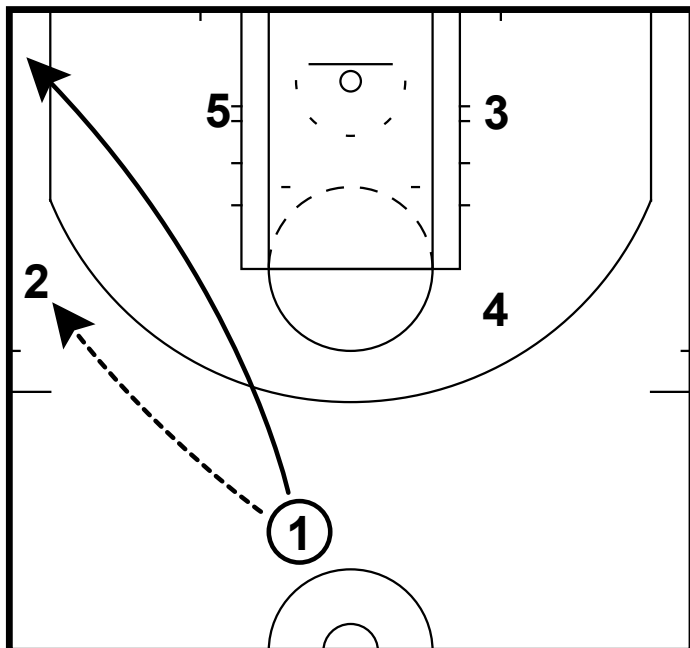


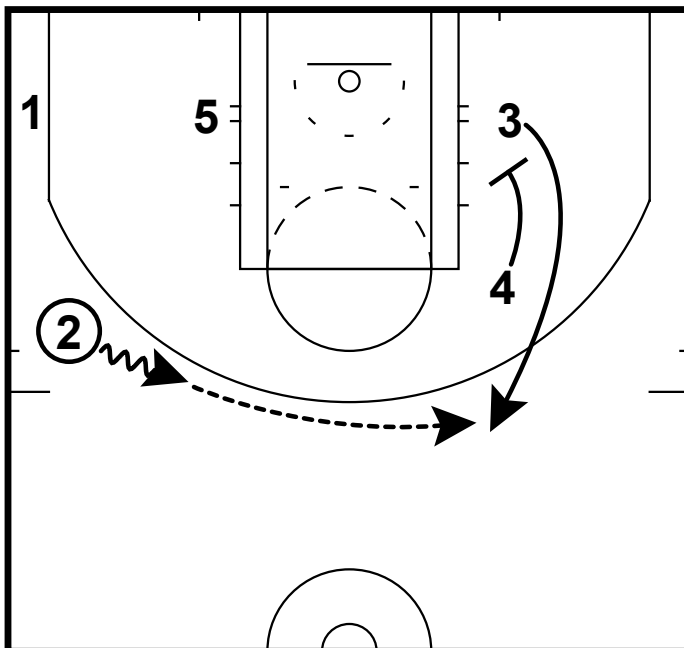
# Coach Hemi

NBA: ORLANDO PG SPECIAL



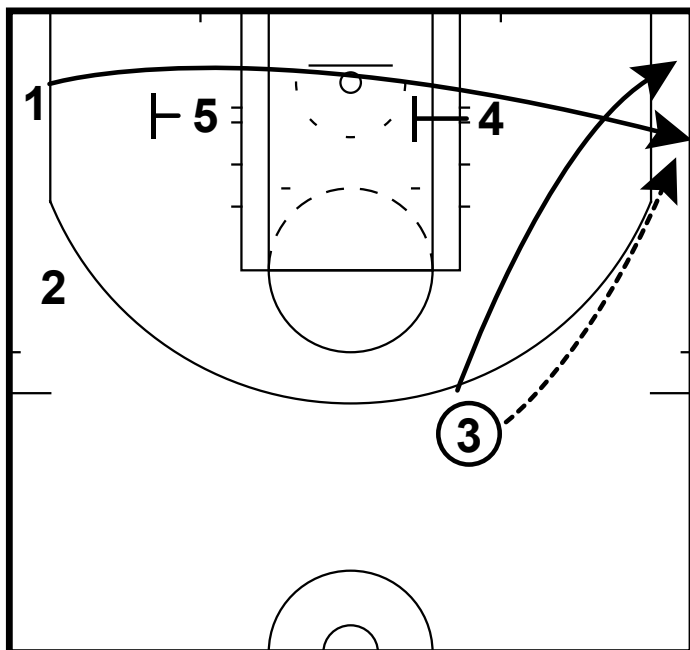
The Magic ran this several times in their OT loss to the Thunder. They ran it to keep the ball in Elfrid Payton's hands on a ball reversal.

NBA: ORLANDO PG SPECIAL



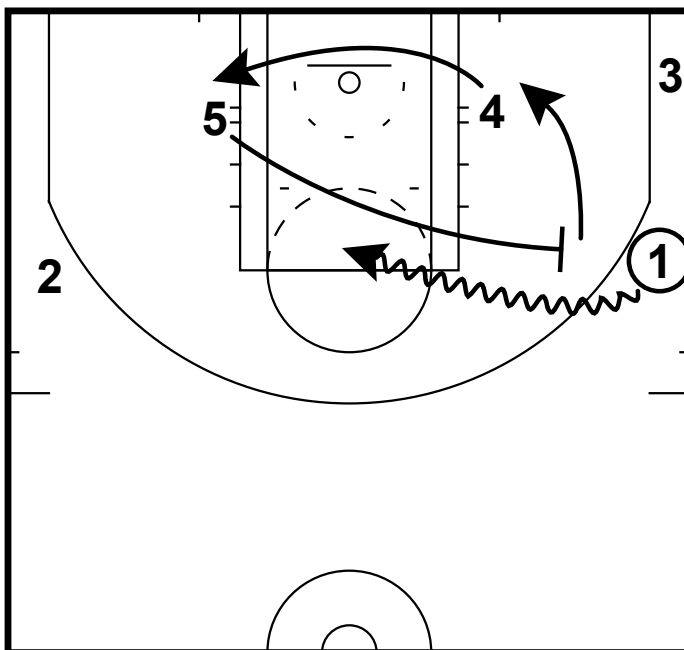
After the corner cut, the set a weakside down screen to set up the ball reversal.

NBA: ORLANDO PG SPECIAL



Now they set a baseline double screen for Payton and get the ball to him on the wing. Once the ball is reversed, the 3 makes another corner cut.

NBA: ORLANDO PG SPECIAL



With Payton on the wing with the ball, the opposite post player runs to set a wing ball screen. This keeps the post defender from jumping and hard hedging. Payton is free to make a play.